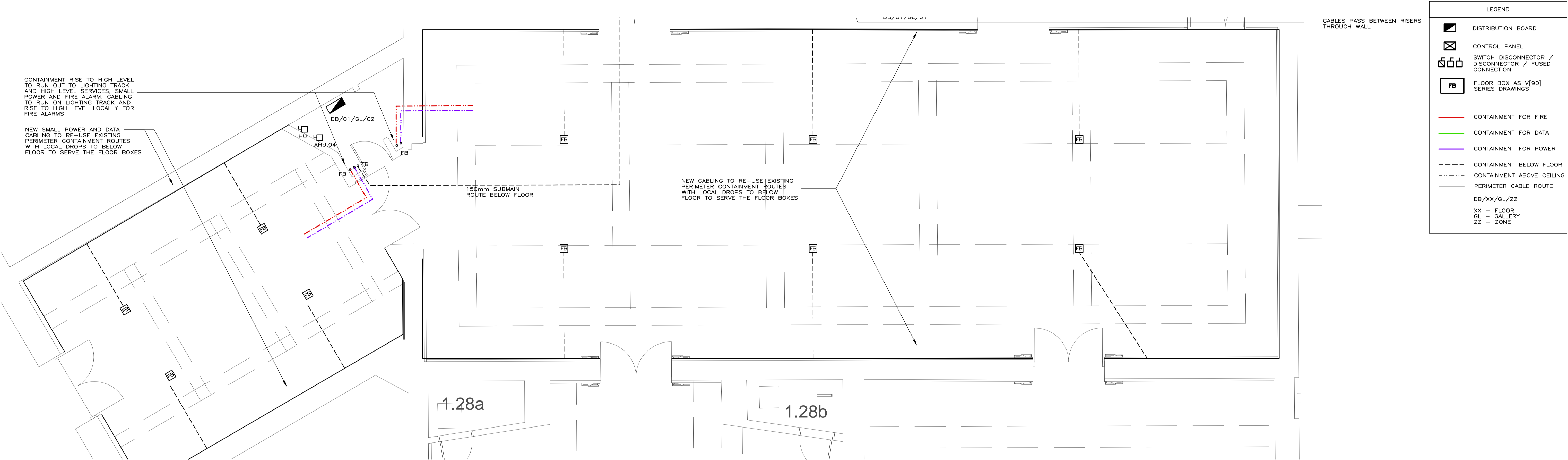


- NOTES:
1. IN ADDITION TO THE ARCHITECTS AND STRUCTURAL ENGINEERS DOCUMENTATION, THE FOLLOWING RELATED MF LLP DOCUMENTS ARE TO BE READ WITH THIS DRAWING:
    - MF LLP ELECTRICAL SPECIFICATION
    - ALL MF LLP SCHEDULES
    - ALL MF LLP DRAWINGS
  2. DISTRIBUTION BOARD SCHEDULES
  3. FINAL CO-ORDINATION OF THE PLANT ROOMS REMAINS THE RESPONSIBILITY OF THE CONTRACTOR - REFER TO MF LLP SPECIFICATION SECTION A64
  4. THIS DRAWING SERIES SHOWS PRIMARY ELECTRICAL CONTAINMENT ONLY. WHERE CONDUIT RUNS TO INDIVIDUAL OUTLET POSITIONS ARE SHOWN, THIS IS STRICTLY FOR GUIDANCE ONLY; THE DESIGN OF FINAL CONTAINMENT REMAINS THE RESPONSIBILITY OF THE ELECTRICAL SUB-CONTRACTOR
  5. THE ELECTRICAL SUB-CONTRACTOR IS TO PROVIDE ALL ELECTRICAL TRUNKING, TRAY AND CONDUIT AS REQUIRED TO DISTRIBUTE POWER TO ALL ITEMS.
  6. ALL CONTAINMENT IS TO RUN CONCEALED WITHIN THE BUILDING FABRIC EXCEPT WHERE AGREED SPECIFICALLY AND IN ADVANCE BY THE ARCHITECT.
  7. IT IS THE THE ELECTRICAL CONTRACTORS RESPONSIBILITY TO ENSURE THAT CABLES WITHIN WALL OR PARTITIONS ARE RUN IN THE SAFE ZONES SET OUT IN BS 7671.
  8. ENSURE 750mm SPACING BETWEEN LV CABLING AND AV CABLING.
  9. THE CONTRACTOR IS TO PROVIDE SUITABLE ELECTRICAL ISOLATORS AND CONTAINMENT FOR PLANT AND EQUIPMENT POWERED FROM A MECHANICAL CONTROL PANEL. NOTE THAT THESE ARE NOT SHOWN ON THIS DRAWINGS.



LEGEND	
	DISTRIBUTION BOARD
	CONTROL PANEL
	SWITCH DISCONNECTOR / DISCONNECTOR / FUSED CONNECTION
	FLOOR BOX AS V[90] SERIES DRAWINGS
	CONTAINMENT FOR FIRE
	CONTAINMENT FOR DATA
	CONTAINMENT FOR POWER
	CONTAINMENT BELOW FLOOR
	CONTAINMENT ABOVE CEILING
	PERIMETER CABLE ROUTE
DB/XX/GL/ZZ	
XX - FLOOR	
GL - GALLERY	
ZZ - ZONE	

P1	06/11/20	D2 TENDER	APS
A	16/10/20	D2 - TENDER ISSUE	APS
*	21/08/20	STAGE 4 - DRAFT ISSUE	SH
rev	date	description	eng

MAX FORDHAM

Max Fordham LLP  
Carver's Warehouse  
77 Dale Street  
Manchester  
M1 2HG  
T. +44 (0) 161 312 8071  
F. +44 (0) 20 7482 0329  
maxfordham.com

Registered Office 42-43 Gloucester Crescent London NW1 7PE

architect  
**DONALD INSALL ASSOCIATES**

job title  
**WALKER ART GALLERY**

project leader	date	scale (at A1)
<b>MD</b>	<b>AUG '20</b>	<b>1:50</b>

drawing title  
**LV DISTRIBUTION  
LAYOUT  
FIRST FLOOR 2/2**

job no	dwg no	rev
<b>6683</b>	6683-MXF-XX-01-DR-E-22100	<b>P1</b>