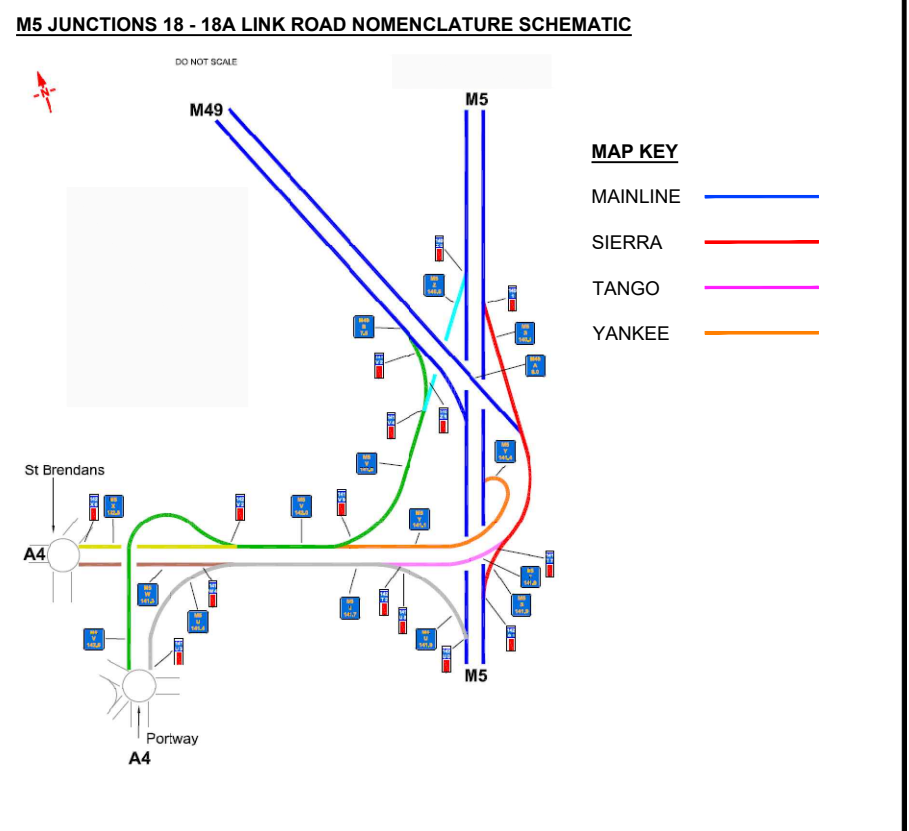


RESIDUAL DESIGN HAZARDS	
THE FOLLOWING HAS BEEN COLLECTED FROM THE PRE-CONSTRUCTION INFORMATION AND HIGHLIGHTS KNOWN RESIDUAL HAZARDS.	
KEY	HS-# = HEALTH AND SAFETY RISK REFERENCE NUMBER E-# = ENVIRONMENT RISK REFERENCE NUMBER

HS-01 - GANTRY
HS-02 - UNDERBRIDGE
HS-03 - OIL PIPELINE
HS-04 - CCTV MAST
HS-05 - OVERHEAD ELECTRICITY CABLES
HS-06 - WATERCOURSE
HS-07 - GAS PIPELINE
HS-08 - OVERBRIDGE
HS-09 - CULVERT
HS-10 - M.O.D. PIPELINE

- NOTES
- THIS IS A C.A.D. DRAWING AND SHOULD NOT BE AMENDED BY HAND.
 - DO NOT SCALE FROM THIS DRAWING. USE STATED DIMENSIONS ONLY. ALL DIMENSIONS ARE IN METRES UNLESS OTHERWISE STATED.
 - THIS DRAWING SHOULD BE PRINTED AND READ IN COLOUR ONLY.
 - THE UTILITIES INDICATED ON THIS DRAWING HAS BEEN PREPARED FOR INFORMATION ONLY AND IS NOT TO BE USED FOR CONSTRUCTION/SITE INVESTIGATION OR LOCATING SERVICES.
 - THE LOCATION OF ALL SERVICES MUST BE CONFIRMED WITH THE RELEVANT SERVICE PROVIDER PRIOR TO UNDERTAKING ANY WORKS. DUCT SURVEY IS REQUIRED PRIOR TO ANY EXCAVATION WORKS BEING UNDERTAKEN.
 - KIER TAKES NO RESPONSIBILITY FOR THE ACCURACY OR COMPLETENESS OF THE INFORMATION SHOWN ON THIS DRAWING, WHICH HAS BEEN COMPILED FROM PLANS PROVIDED BY THE UTILITY COMPANIES. THE LOCATION OF ALL SERVICES MUST BE CONFIRMED WITH THE RELEVANT SERVICE PROVIDER PRIOR TO UNDERTAKING ANY WORKS.

STATS KEY	
GAS (ABANDONED)	— G —
GAS (MEDIUM PRESSURE)	— GMP —
TELEPHONE UNDERGROUND	— T —
ELECTRICITY OVERHEAD	— E(OH) — E(OH) —
ELECTRICITY UNDERGROUND	— E — E —
WATER SUPPLIES	— W —
SEWERS	— S —
MOTORWAY COMMS	— MC —
OIL PIPELINE	— OL —
MARKER NODES	•
TRAFFIC LOOPS	□ □ □ □



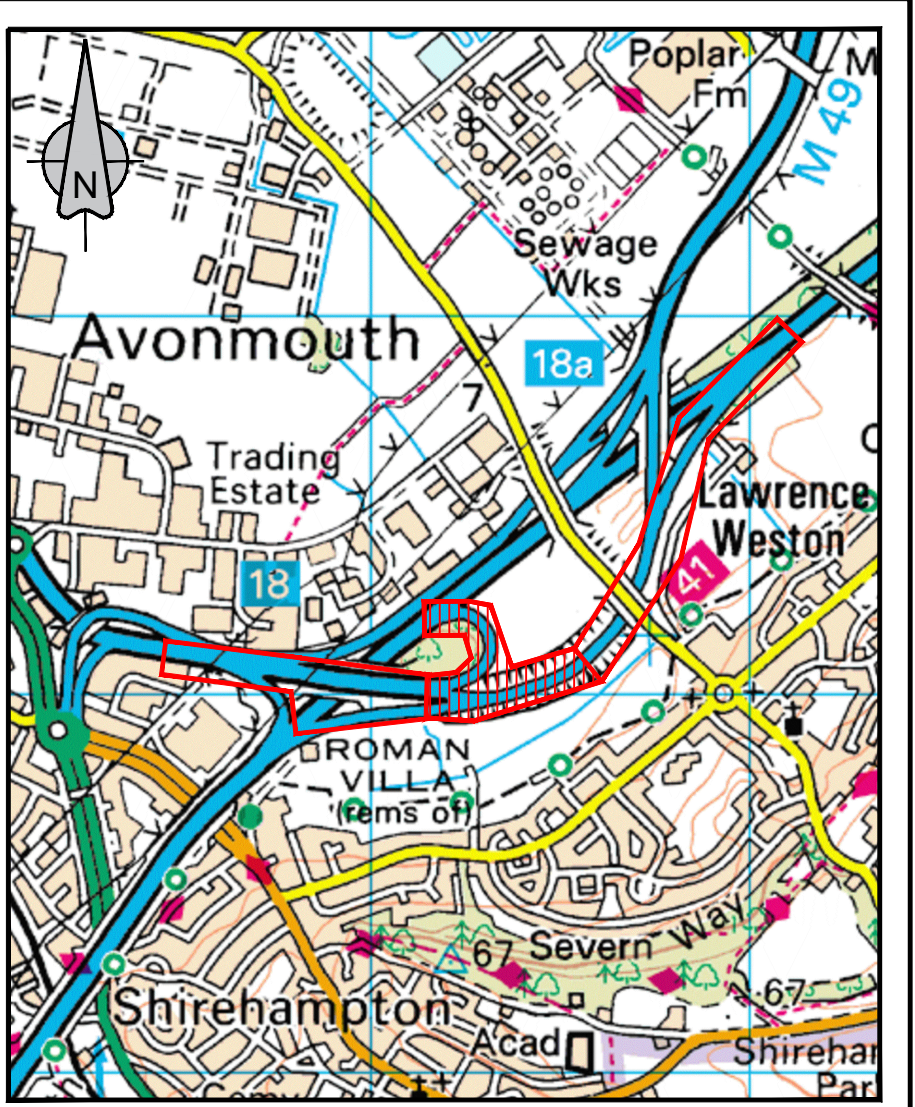
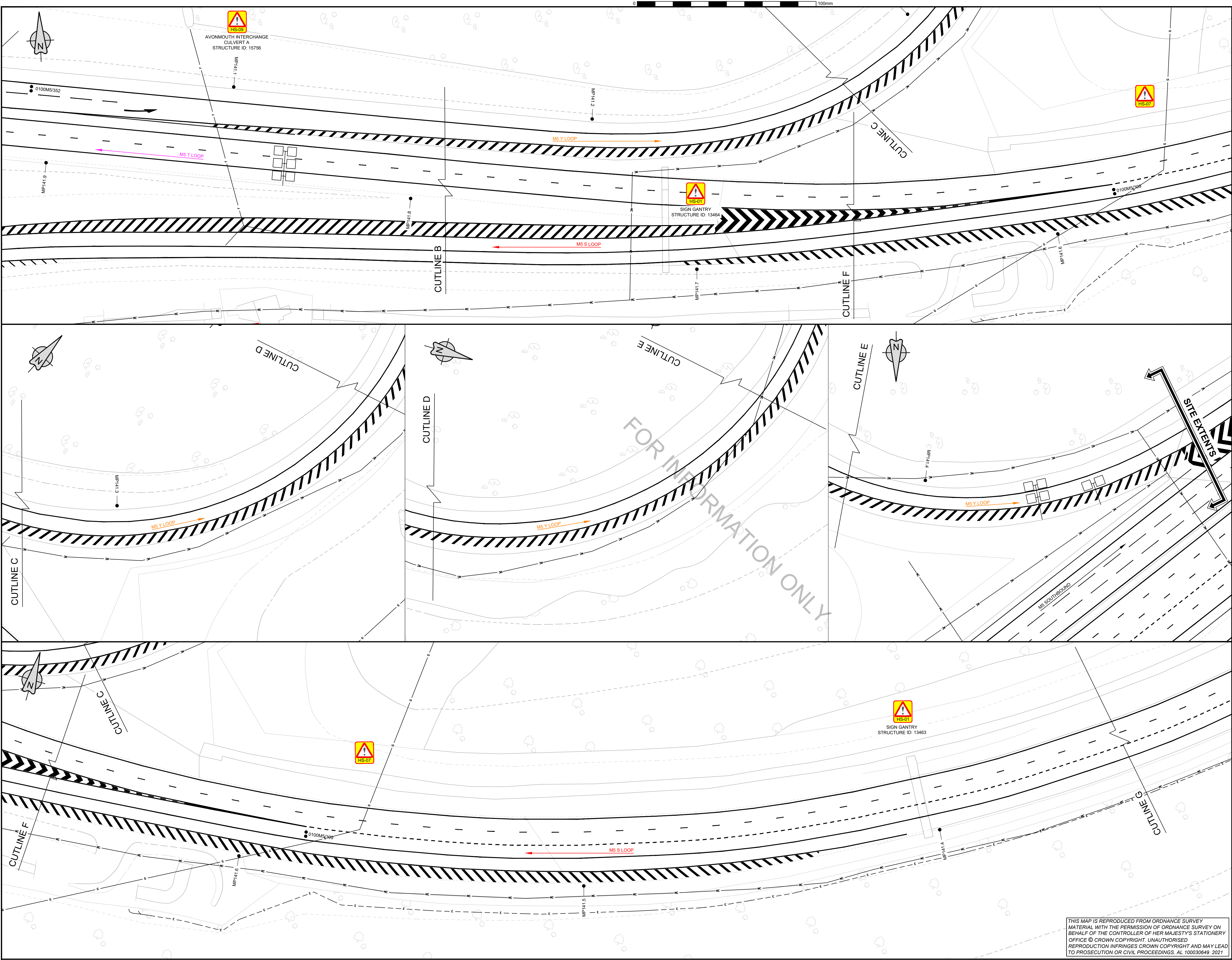
C2	STATS INFO REVISED	AM	GR	14/07/2021
F1	FIRST ISSUE	DF	MO	07/05/2020
REV	DETAILS	CHKD	APPD	DATE



SCHEME NAME	570131B VRS GATEWAY 1A STUDY 2019-2020
DRAWING TITLE	SCHEME 2 - M5 J18 T, Y & S LOOP STATUTORY UNDERTAKERS (SHEET 1 OF 3)

DRAWN : SB	SCALE : 1:500	DRAWING STATUS
DESIGN : SB	DIMENSIONS : m	WORK IN PROGRESS
CHKD : DF	ORIG DWG SIZE: A1	PRELIMINARY DRAWING
APPD : MO	COPYRIGHT © KIER	EXTERNAL ISSUE
DATE : 07/05/20		AS-BUILT
SUITABILITY: S2	FOR INFORMATION	

DRAWING NUMBER	PROJECT ORIGINATOR VOLUME	SCHEME REFERENCE No.
HE570131 - KIER - GEN		570131
M5_TYS_LOOP - DE - CH - 000001		REVISION
LOCATION TYPE ROLE NUMBER		C2



RESIDUAL DESIGN HAZARDS

THE FOLLOWING HAS BEEN COLLECTED FROM THE PRE-CONSTRUCTION INFORMATION AND HIGHLIGHTS KNOWN RESIDUAL HAZARDS.

KEY

HS-# = HEALTH AND SAFETY RISK REFERENCE NUMBER
E-# = ENVIRONMENT RISK REFERENCE NUMBER

HS-01 - GANTRY
HS-02 - UNDERBRIDGE
HS-03 - OIL PIPELINE
HS-04 - CCTV MAST
HS-05 - OVERHEAD ELECTRICITY CABLES
HS-06 - WATERCOURSE
HS-07 - GAS PIPELINE
HS-08 - OVERBRIDGE
HS-09 - CULVERT
HS-10 - M.O.D. PIPELINE

NOTES

- THIS IS A C.A.D. DRAWING AND SHOULD NOT BE AMENDED BY HAND.
- DO NOT SCALE FROM THIS DRAWING. USE STATED DIMENSIONS ONLY. ALL DIMENSIONS ARE IN METRES UNLESS OTHERWISE STATED.
- THIS DRAWING SHOULD BE PRINTED AND READ IN COLOUR ONLY.
- THE UTILITIES INDICATED ON THIS DRAWING HAS BEEN PREPARED FOR INFORMATION ONLY AND IS NOT TO BE USED FOR CONSTRUCTION/SITE INVESTIGATION OR LOCATING SERVICES.
- THE LOCATION OF ALL SERVICES MUST BE CONFIRMED WITH THE RELEVANT SERVICE PROVIDER PRIOR TO UNDERTAKING ANY WORKS. DUCT SURVEY IS REQUIRED PRIOR TO ANY EXCAVATION WORKS BEING UNDERTAKEN.
- KIER TAKES NO RESPONSIBILITY FOR THE ACCURACY OR COMPLETENESS OF THE INFORMATION SHOWN ON THIS DRAWING, WHICH HAS BEEN COMPILED FROM PLANS PROVIDED BY THE UTILITY COMPANIES. THE LOCATION OF ALL SERVICES MUST BE CONFIRMED WITH THE RELEVANT SERVICE PROVIDER PRIOR TO UNDERTAKING ANY WORKS.

STATS KEY

GAS (ABANDONED) — G —
GAS (MEDIUM PRESSURE) — GMP —
TELEPHONE UNDERGROUND — T —
ELECTRICITY OVERHEAD — ECHY — ECHY —
ELECTRICITY UNDERGROUND — E — E —
WATER SUPPLIES — W —
SEWERS — S —
MOTORWAY COMMS — MC —
OIL PIPELINE — OL —

MARKER NODES — ● —

TRAFFIC LOOPS — □ —

M5 JUNCTIONS 18 - 18A LINK ROAD NOMENCLATURE SCHEMATIC

MAP KEY

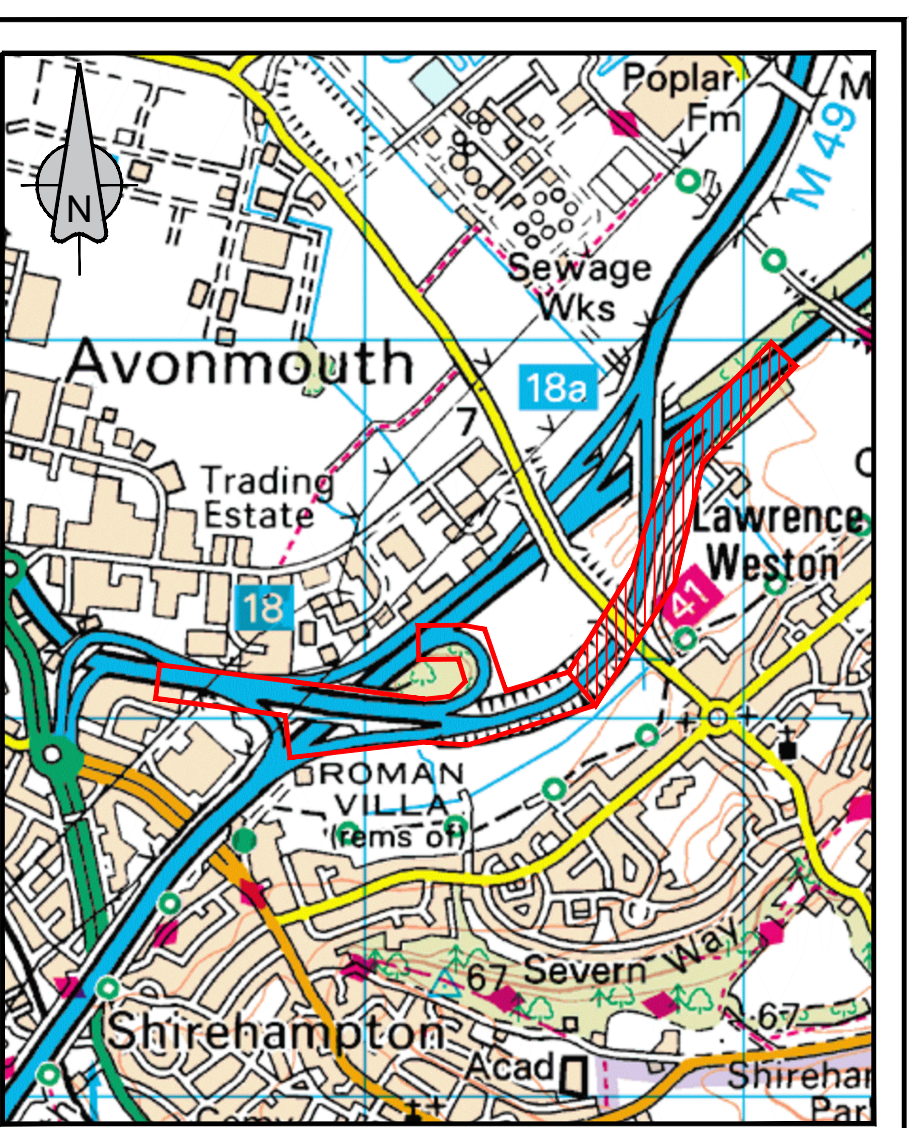
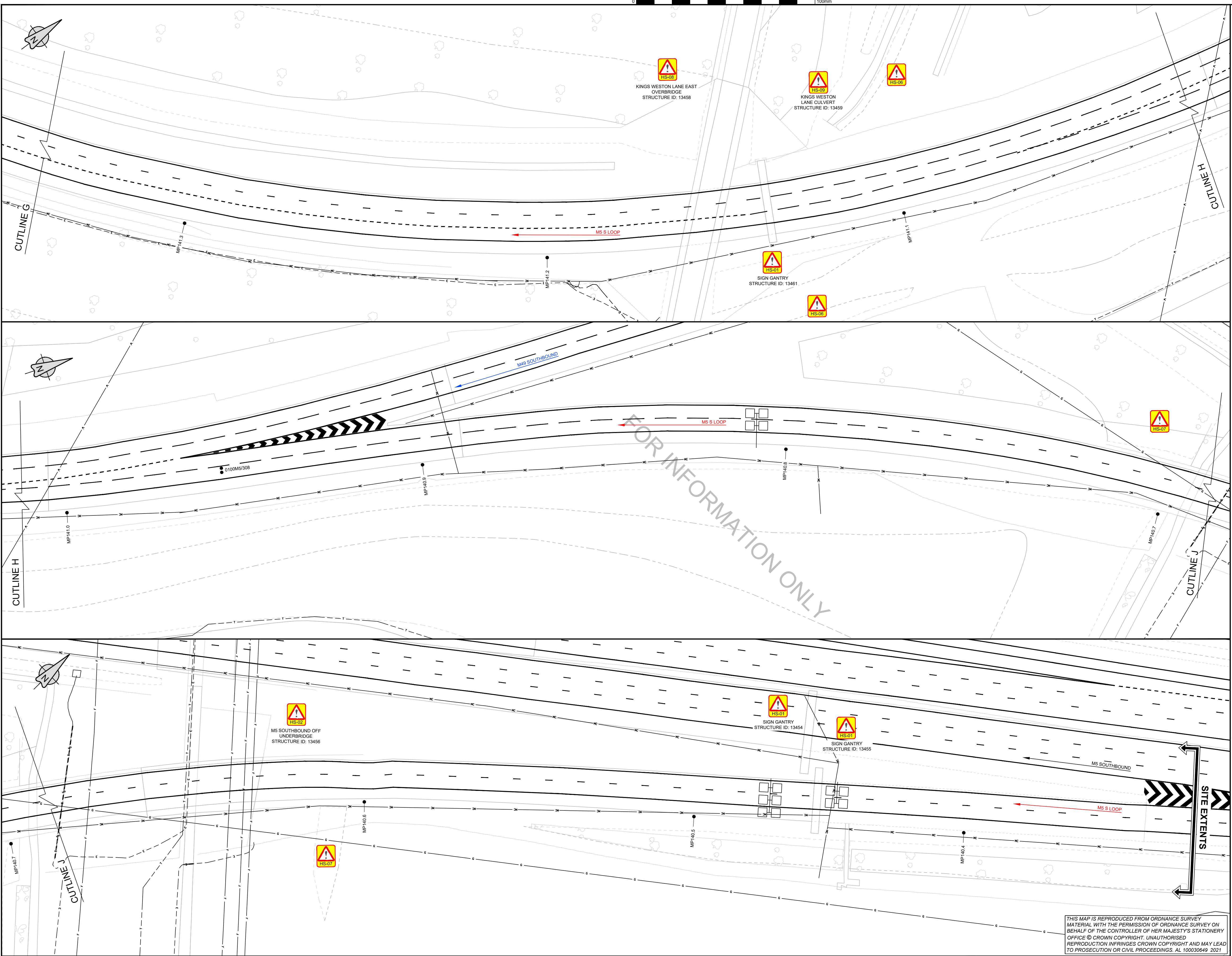
MAINLINE — BLUE —
SIERRA — RED —
TANGO — MAGENTA —
YANKEE — ORANGE —

THIS MAP IS REPRODUCED FROM ORDNANCE SURVEY MATERIAL WITH THE PERMISSION OF ORDNANCE SURVEY ON BEHALF OF THE CONTROLLER OF HER MAJESTY'S STATIONERY OFFICE © CROWN COPYRIGHT. UNAUTHORISED REPRODUCTION INFRINGES CROWN COPYRIGHT AND MAY LEAD TO PROSECUTION OR CIVIL PROCEEDINGS. AL 100030649 2021

REV	DETAILS	CHKD	APPD	DATE
C2	STATS INFO REVISED	AM	GR	14/07/2021
F1	FIRST ISSUE	DF	MO	07/05/2020

CLIENT 	AGENT 	SCHEME NAME 570131B VRS GATEWAY 1A STUDY 2019-2020 SCHEME 2 - M5 J18 T, Y & S LOOP STATUTORY UNDERTAKERS (SHEET 2 OF 3)	DRAWN : SB	SCALE : 1:500	DRAWING STATUS
			DESIGN : SB	DIMENSIONS : m	WORK IN PROGRESS
DRAWING TITLE STATUTORY UNDERTAKERS (SHEET 2 OF 3)			CHKD : DF	ORIG DWG SIZE: A1	PRELIMINARY DRAWING
			APPD : MO	COPYRIGHT © KIER	EXTERNAL ISSUE ✓
			DATE : 07/05/20		AS-BUILT
			SUITABILITY: S2	FOR INFORMATION	

DRAWING NUMBER PROJECT ORIGINATOR VOLUME HE570131 - KIER - GEN	SCHEME REFERENCE No. 570131
M5_TYS_LOOP - DE - CH - 000002 LOCATION TYPE ROLE NUMBER	REVISION C2



RESIDUAL DESIGN HAZARDS

THE FOLLOWING HAS BEEN COLLECTED FROM THE PRE-CONSTRUCTION INFORMATION AND HIGHLIGHTS KNOWN RESIDUAL HAZARDS.

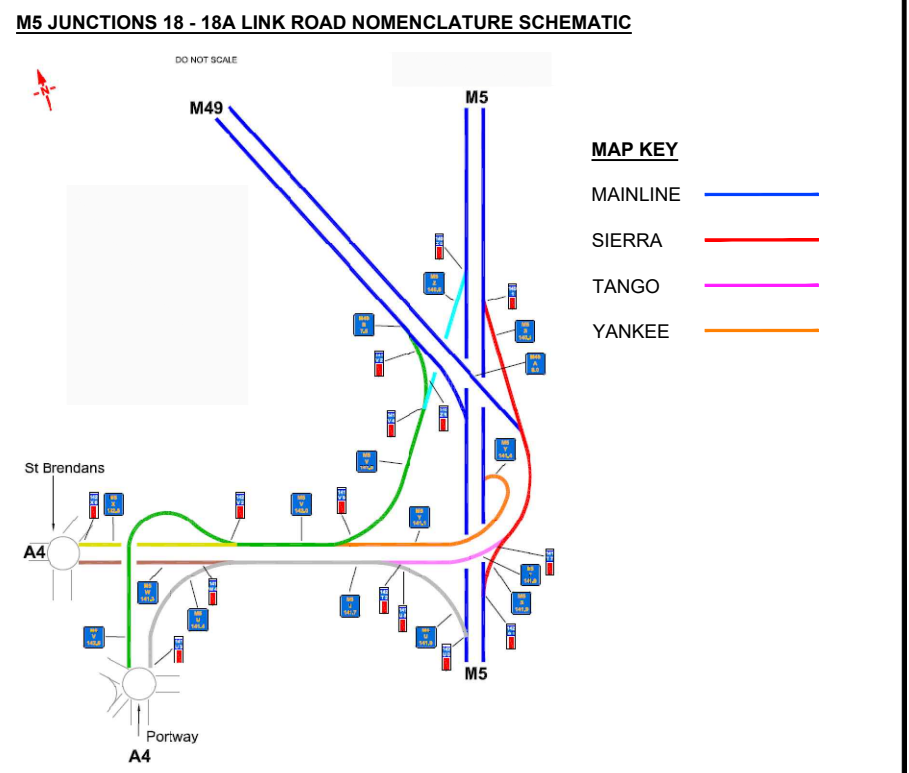
KEY

HS-# = HEALTH AND SAFETY RISK REFERENCE NUMBER
E-# = ENVIRONMENT RISK REFERENCE NUMBER

- HS-01 - GANTRY**
HS-02 - UNDERBRIDGE
HS-03 - OIL PIPELINE
HS-04 - CCTV MAST
HS-05 - OVERHEAD ELECTRICITY CABLES
HS-06 - WATERCOURSE
HS-07 - GAS PIPELINE
HS-08 - OVERBRIDGE
HS-09 - CULVERT
HS-10 - M.O.D. PIPELINE

- NOTES**
- THIS IS A C.A.D. DRAWING AND SHOULD NOT BE AMENDED BY HAND.
 - DO NOT SCALE FROM THIS DRAWING. USE STATED DIMENSIONS ONLY. ALL DIMENSIONS ARE IN METRES UNLESS OTHERWISE STATED.
 - THIS DRAWING SHOULD BE PRINTED AND READ IN COLOUR ONLY.
 - THE UTILITIES INDICATED ON THIS DRAWING HAS BEEN PREPARED FOR INFORMATION ONLY AND IS NOT TO BE USED FOR CONSTRUCTION/SITE INVESTIGATION OR LOCATING SERVICES.
 - THE LOCATION OF ALL SERVICES MUST BE CONFIRMED WITH THE RELEVANT SERVICE PROVIDER PRIOR TO UNDERTAKING ANY WORKS. DUCT SURVEY IS REQUIRED PRIOR TO ANY EXCAVATION WORKS BEING UNDERTAKEN.
 - KIER TAKES NO RESPONSIBILITY FOR THE ACCURACY OR COMPLETENESS OF THE INFORMATION SHOWN ON THIS DRAWING, WHICH HAS BEEN COMPILED FROM PLANS PROVIDED BY THE UTILITY COMPANIES. THE LOCATION OF ALL SERVICES MUST BE CONFIRMED WITH THE RELEVANT SERVICE PROVIDER PRIOR TO UNDERTAKING ANY WORKS.

- STATS KEY**
- GAS (ABANDONED) — 0 —
- GAS (MEDIUM PRESSURE) — GMP —
- TELEPHONE UNDERGROUND — T —
- ELECTRICITY OVERHEAD — ECHY — ECHY —
- ELECTRICITY UNDERGROUND — E —
- WATER SUPPLIES — W —
- SEWERS — F —
- MOTORWAY COMMS — MC —
- OIL PIPELINE — OL —
- MARKER NODES**
- TRAFFIC LOOPS — [Symbol] —



C2	STATS INFO REVISED	AM	GR	14/07/2021
F1	FIRST ISSUE	DF	MO	07/05/2020
REV	DETAILS	CHKD	APPD	DATE

DRAWING NUMBER	PROJECT	ORIGINATOR	VOLUME	SCHEME REFERENCE NO.
HE570131	KIER	GEN	570131	
M5_TYS_LOOP	DE	CH	000003	REVISION
LOCATION	TYPE	ROLE	NUMBER	C2



SCHEME NAME	570131B VRS GATEWAY 1A STUDY 2019-2020
DRAWING TITLE	SCHEME 2 - M5 J18 T, Y & S LOOP STATUTORY UNDERTAKERS (SHEET 3 OF 3)

DRAWN : SB	SCALE : 1:500	DRAWING STATUS
DESIGN : SB	DIMENSIONS : m	WORK IN PROGRESS
CHKD : DF	ORIG DWG SIZE: A1	PRELIMINARY DRAWING
APPD : MO	COPYRIGHT © KIER	EXTERNAL ISSUE
DATE : 07/05/20		AS-BUILT
SUITABILITY: S2	FOR INFORMATION	