

Photographic Log - Identification of External Cladding to 2Nr high rise Blocks  
in Castle Vale  
Pioneer Group - 8165



**Topcliffe House**

Photograph: 1

Front Elevation



**Topcliffe House**

Photograph: 2

Rear Elevation



**Topcliffe House**

Photograph: 3

Right Hand Elevation



**Topcliffe House**

Photograph: 4

Left Hand Elevation

## Identification of External Cladding to 2Nr high rise Blocks in Castle Vale



### Topcliffe House – Sample LHE-GF-MID-EWI

Photograph: 5

External render removed showing mineral wool insulation beneath.



### Topcliffe House – Sample LHE-GF-MID-EWI

Photograph: 6

Exposed location using a 130mm core drill, showing the original wall substrate and 100mm thick mineral wool insulation behind the 5mm external render.



### Topcliffe House – Sample LHE-GF-MID-EWI

Photograph: 7

5mm of external wall finish built up of base coat render, reinforcement (Scrim), primer and decorative finish.



### Topcliffe House – Sample LHE-GF-MID-EWI

Photograph: 8

100mm thick mineral wool insulation removed from core hole location.



## Identification of External Cladding to 2Nr high rise Blocks in Castle Vale



### Topcliffe House – Sample LHE-GF-MID-EWI

Photograph: 9

Core hole made good using adequate mastic sealant.



### Topcliffe House – Sample FE-GF-LH-EWI

Photograph: 10

External render removed showing mineral wool insulation beneath.



### Topcliffe House – Sample FE-GF-LH-EWI

Photograph: 11

Exposed location using a 130mm core drill, showing the original wall substrate and 100mm thick mineral wool insulation behind the 5mm external render.



### Topcliffe House – Sample FE-GF-LH-EWI

Photograph: 12

Two layers of 50mm thick mineral wool insulation separated by a layer of adhesive or the like.

## Identification of External Cladding to 2Nr high rise Blocks in Castle Vale



**Topcliffe House – Sample FE-GF-LH-EWI**

Photograph: 13

Evidence of reinforcement scrim.



**Topcliffe House – Sample FE-GF-LH-EWI**

Photograph: 14

130mmx130mm external render.



**Topcliffe House – Sample FE-GF-LH-EWI**

Photograph: 15

5mm of external wall finish built up of base coat render, reinforcement (Scrim), primer and decorative finish.



**Topcliffe House – Sample FE-GF-LH-EWI**

Photograph: 16

Core hole made good using adequate mastic sealant.



## Identification of External Cladding to 2Nr high rise Blocks in Castle Vale



**Chivenor House**

Photograph: 17

Front Elevation



**Chivenor House**

Photograph: 18

Right Hand Elevation



**Chivenor House**

Photograph: 19

Rear Elevation



**Chivenor House**

Photograph: 20

Left Hand Elevation

## Identification of External Cladding to 2Nr high rise Blocks in Castle Vale



### Chivenor House – Sample RHE-GF-MID-EWI

Photograph: 21

Sample taken approx. 250mmx250mm exposing EWI system and fixing details.



### Chivenor House – Sample RHE-GF-MID-EWI

Photograph: 22

Exposed location showing the original wall substrate and 70mm thick mineral wool insulation behind the 5mm external decorative render.



### Chivenor House – Sample RHE-GF-MID-EWI

Photograph: 23

Anchoring fixing located, adequately fixed.



### Chivenor House – Sample RHE-GF-MID-EWI

Photograph: 24

EWI system at Damp proof course (DPC) level proud 80mm from original substrate.



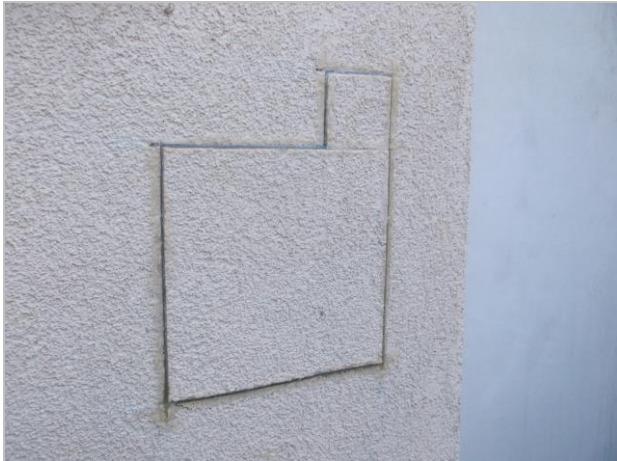
## Identification of External Cladding to 2Nr high rise Blocks in Castle Vale



### Chivenor House – Sample RHE-GF-MID-EWI

Photograph: 25

70mm thick mineral wool insulation and 5mm decorative external wall finish removed from location.



### Chivenor House – Sample RHE-GF-MID-EWI

Photograph: 26

Exposed area made good using adequate mastic sealant.



### Chivenor House – Sample FE-GF-RH-EWI

Photograph: 27

Sample taken approx. 250mmx250mm exposing EWI system and fixing details.



### Chivenor House – Sample FE-GF-RH-EWI

Photograph: 28

Additional 100mm approx. sample taken exposing anchor fixing.

## Identification of External Cladding to 2Nr high rise Blocks in Castle Vale



### Chivenor House – Sample FE-GF-RH-EWI

Photograph: 29

Exposed location showing the original wall substrate and 70mm thick mineral wool insulation behind the 5mm external decorative render.



### Chivenor House – Sample FE-GF-RH-EWI

Photograph: 30

Anchoring fixing located, adequately fixed.



### Chivenor House – Sample FE-GF-RH-EWI

Photograph: 31

5mm thick base coat and external render.



### Chivenor House – Sample FE-GF-RH-EWI

Photograph: 32

Exposed area made good using adequate mastic sealant.