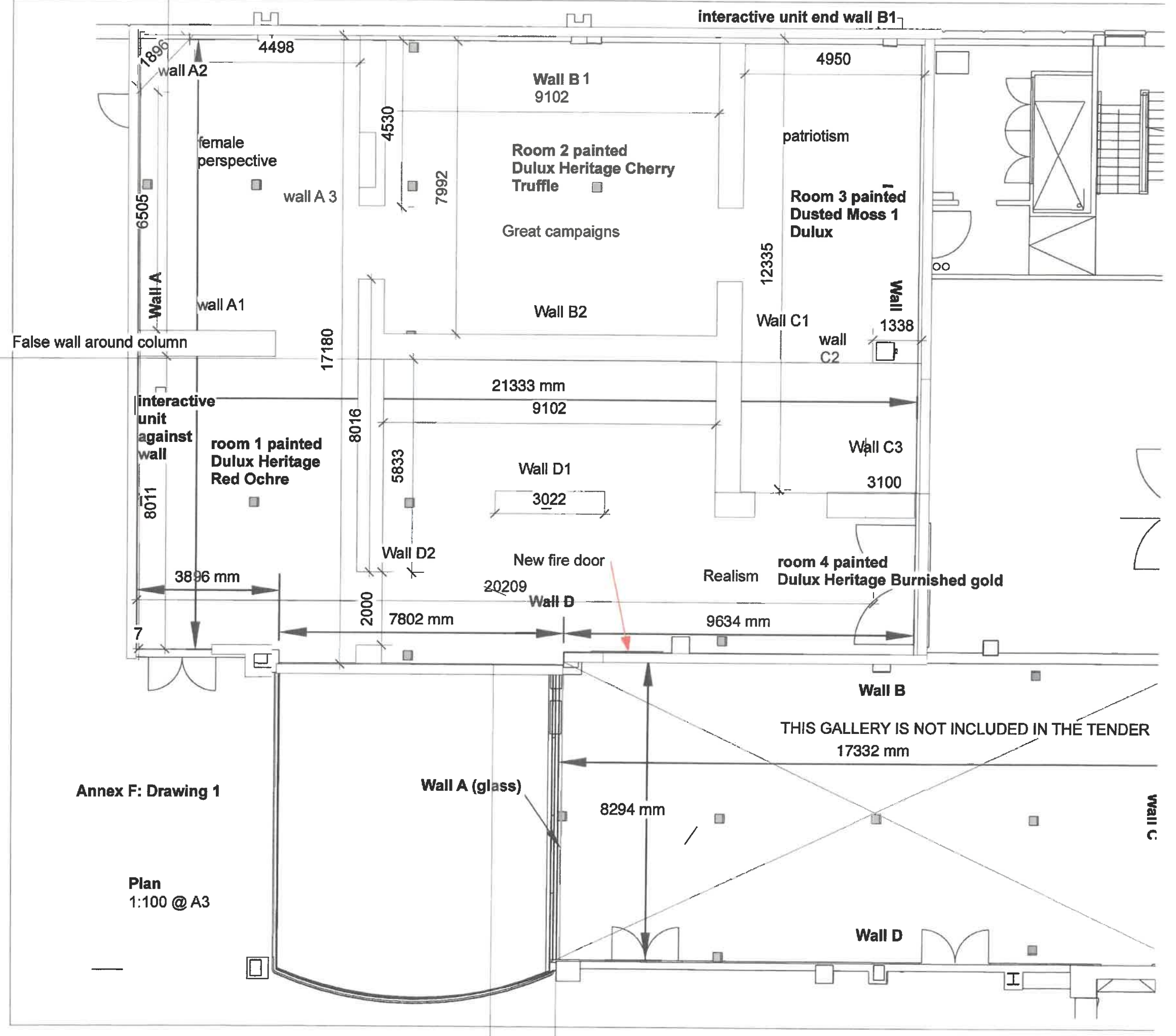


Annex F – DRAWINGS

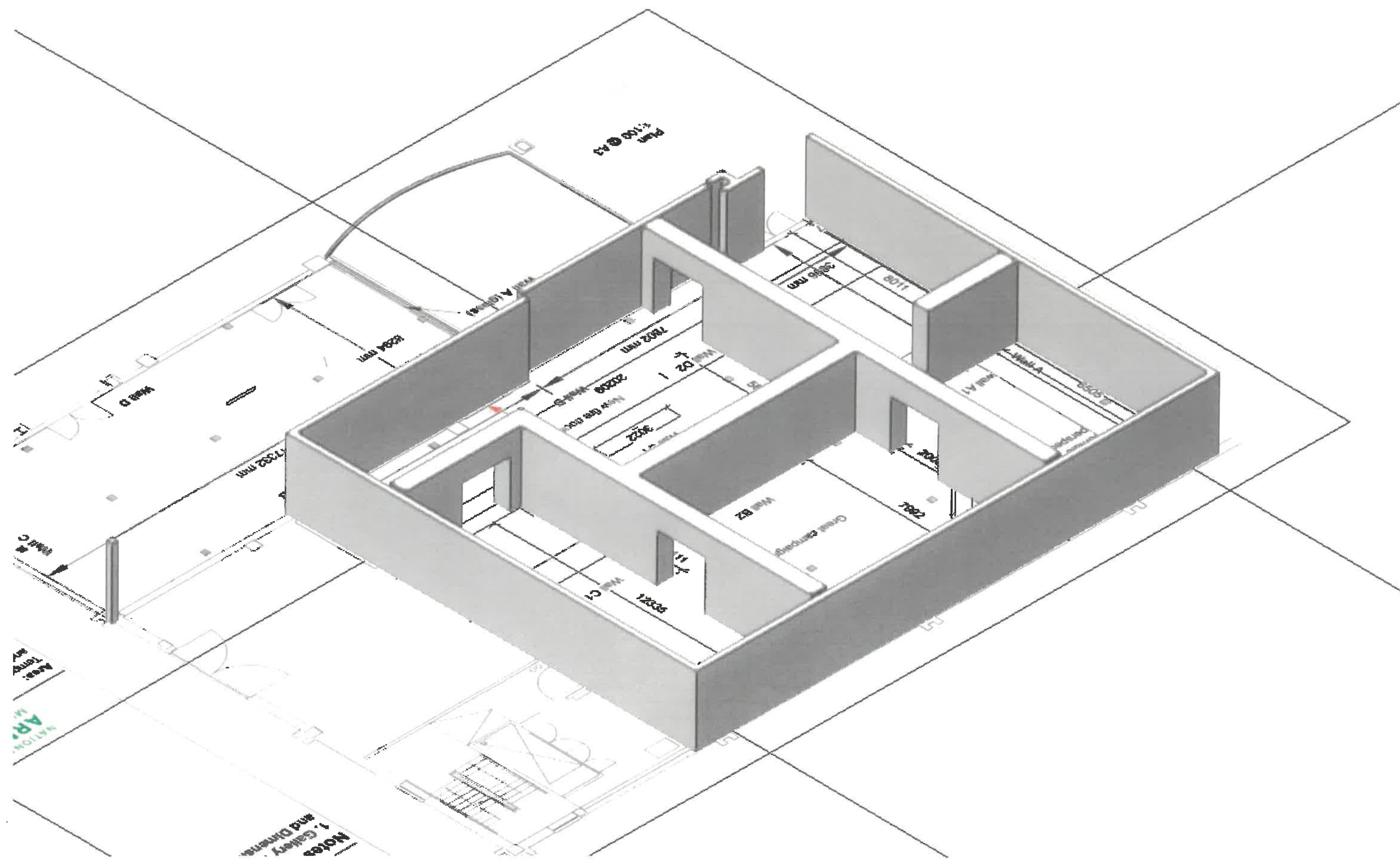
TO BE READ IN CONJUNCTION WITH ANNEX E PRICING TEMPLATE

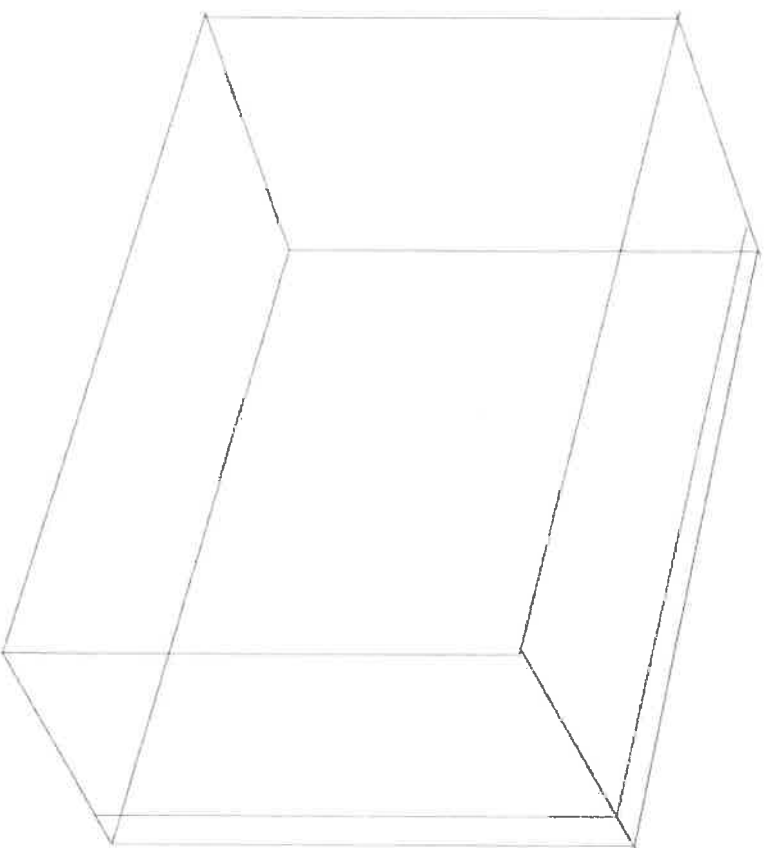
DRAWING 1:	GROUND PLAN OF SPACE SHOWING WALL POSITIONING AND PAINT LOCATIONS
DRAWING: 2:	ISOMETRIC OF SPACE
DRAWING 3	AIDE DE CAMP DISPLAY CASE
DRAWING 4:	DISPLAY CASES FINAL 1 & 2 – FEMALE PERSPECTIVE AND RORKE’S DRIFT CASES
DRAWING 5:	DISPLAY CASE 3 – PATROITISM AREA
DRAWING 6:	INTERACTIVE UNITS X 2 – 3 NO DRAWINGS: ISOMETRIC VIEW, PLAN VIEW, SIDE VIEW
DRAWING 7:	ROLL CALL VITRINE
DRAWING 8:	CADOGAN CASE



Annex F: Drawing 1

Plan
1:100 @ A3





Drawing 3: Aide De Camp Hat Case

Wall based case -

Backboard made of ZMDF

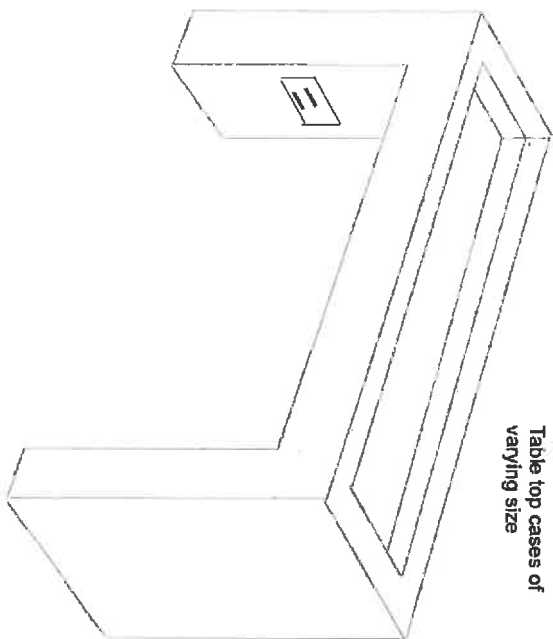
screwed to walls, then screws filled.

**Backboard painted in dacrlyite and Dulux water based heritage emulsion in
Dusted Moss 1**

**12mm Acrylic hood attached to backboard with daisy head security screws
counter sunk in the side.**

**Internal dimensions of hood 284mm wide x 183mm deep from backboard to
front of case, 173mm high**

Table top cases of
varying size



CASE 1 FEMALE

PERSPECTIVE

Internal dimensions: 1980mm
L x 520mm w from front to
back of case. 100mm deep
excluding depth of acrylic.

External dimensions: 2080mm
L x 620mm w from front to
back of case.

Height from floor to underside
of base 800mm

overall height 900mm
case to be painted with
dacrylite and water based
emulsion, Dulux Heritage Red
Ochre

Baseboard to be covered in
Baumann fabric (to be
supplied)

12mm acrylic top to be
recessed and secured with flat
daisy head security screws
covered by a magnetic frame
30mm all around.

REMOVABLE panel in leg of
case for artsorb cassette,
locked with star key

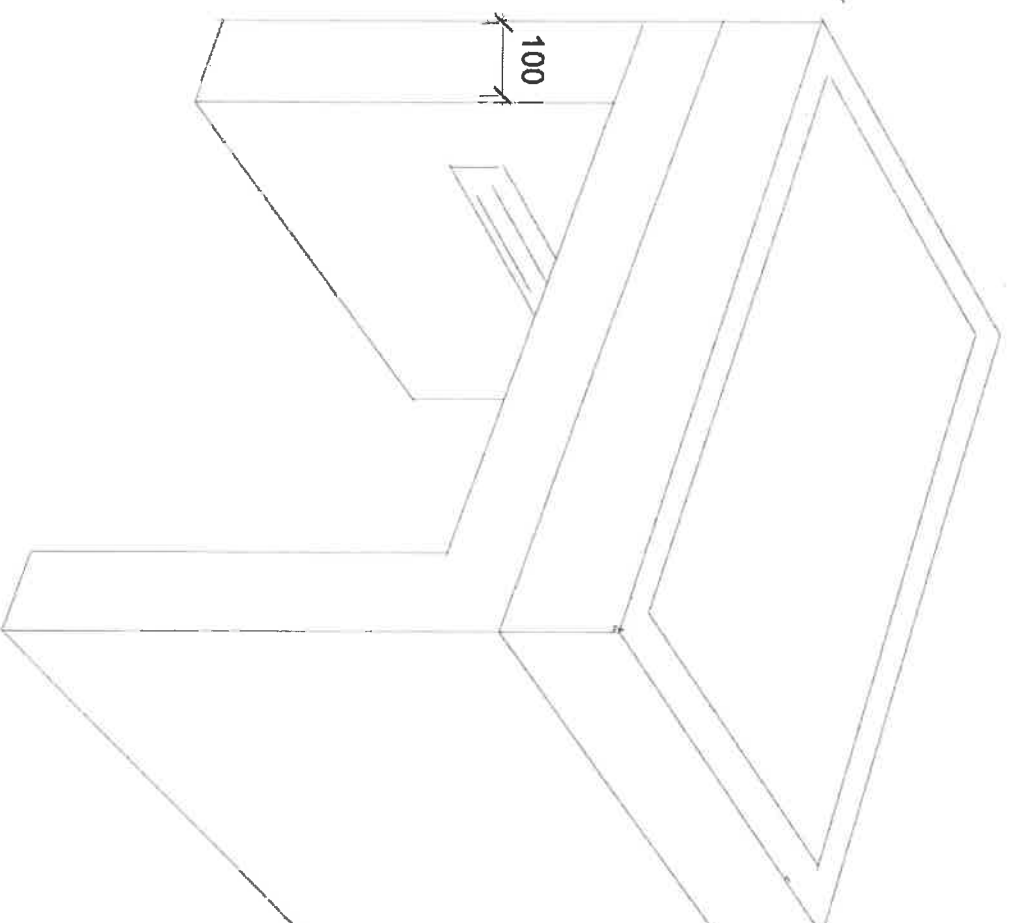
CASE 2 GREAT CAMPAIGNS

Internal dimensions 1840mm L
x 430mm w from front to back of case

LED strip to be added around top edge
beneath border of 30mm

Case to be secured as above
Painted with Dacrylite and Dulux Heritage water
based emulsion in Cherry Truffle

Do not scale from drawing



Do not scale from drawings

PATRIOTISM CASE

dimension from underside of base to floor 700mm

Internal height of 12mm acrylic hood 200mm H

internal depth of case from the back to the front of the case 500mm

Internal length of the case 940mm

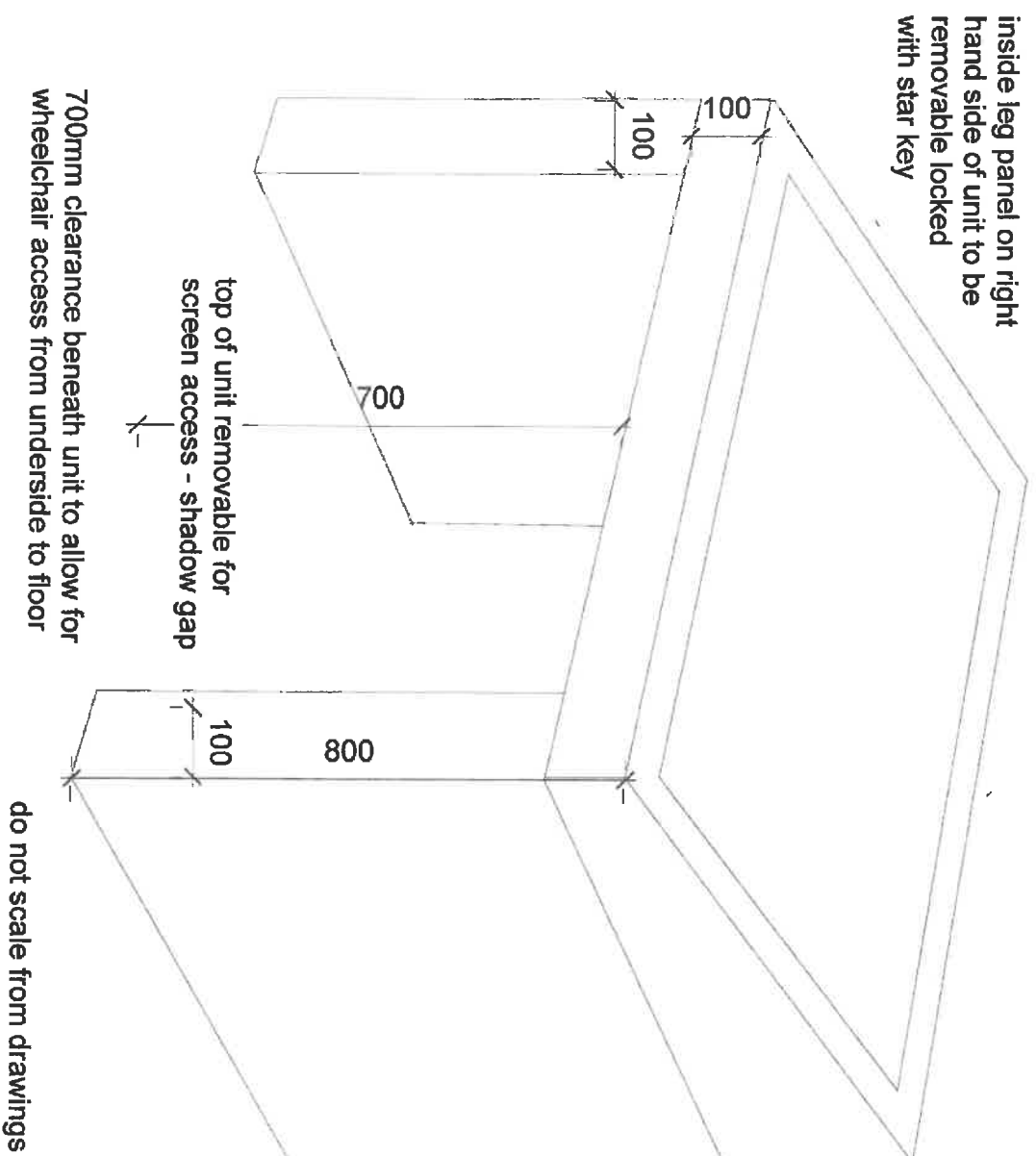
**Removable panel for prosorb cassette in leg, lockable with star key
LED light beneath rim of case. Also wires from LED to go into plug point from leg**

**Case base made of ZMDF painted with dacrlylite varnish and water based
emulsion, Dulux Heritage Dusted Moss 1**

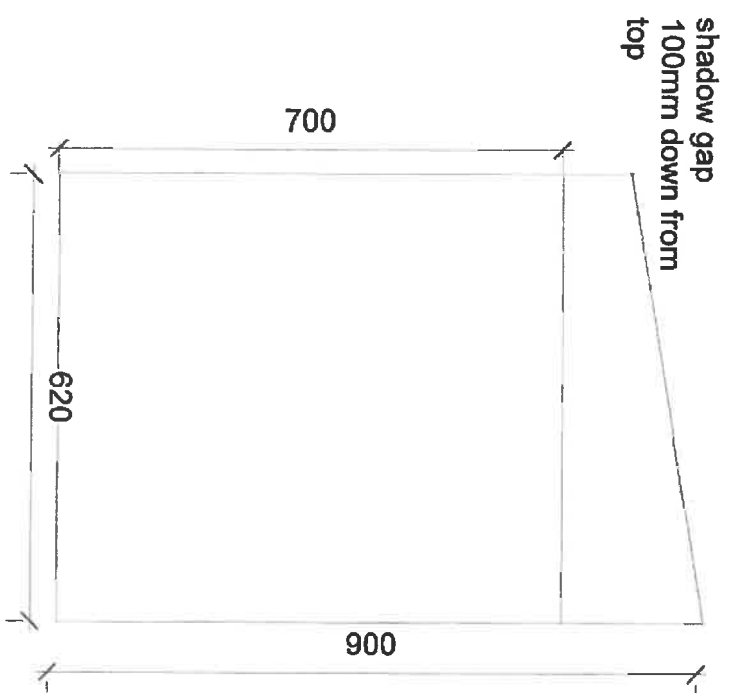
Baseboard of case covered with Baumann fabric to be supplied.

Overall height from floor to top of hood 900mm

isometric view of interactive unit



Unit 620mm deep to fit Planar PT3285PW screen
(see plan view drawing)
width of unit 1 metre

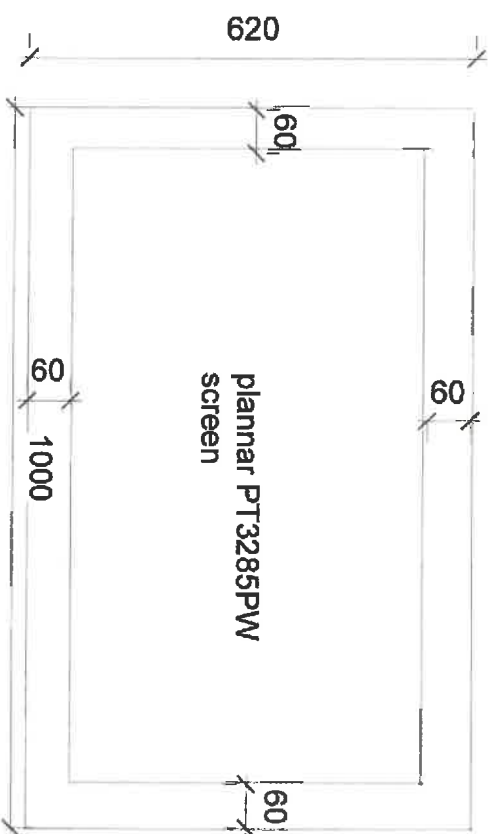


top removable to allow screen access

zmdf - x 2 interactive units,
painted with dulux heritage paint,
refer annex E

housing 32" plannar
PT3285PW screen

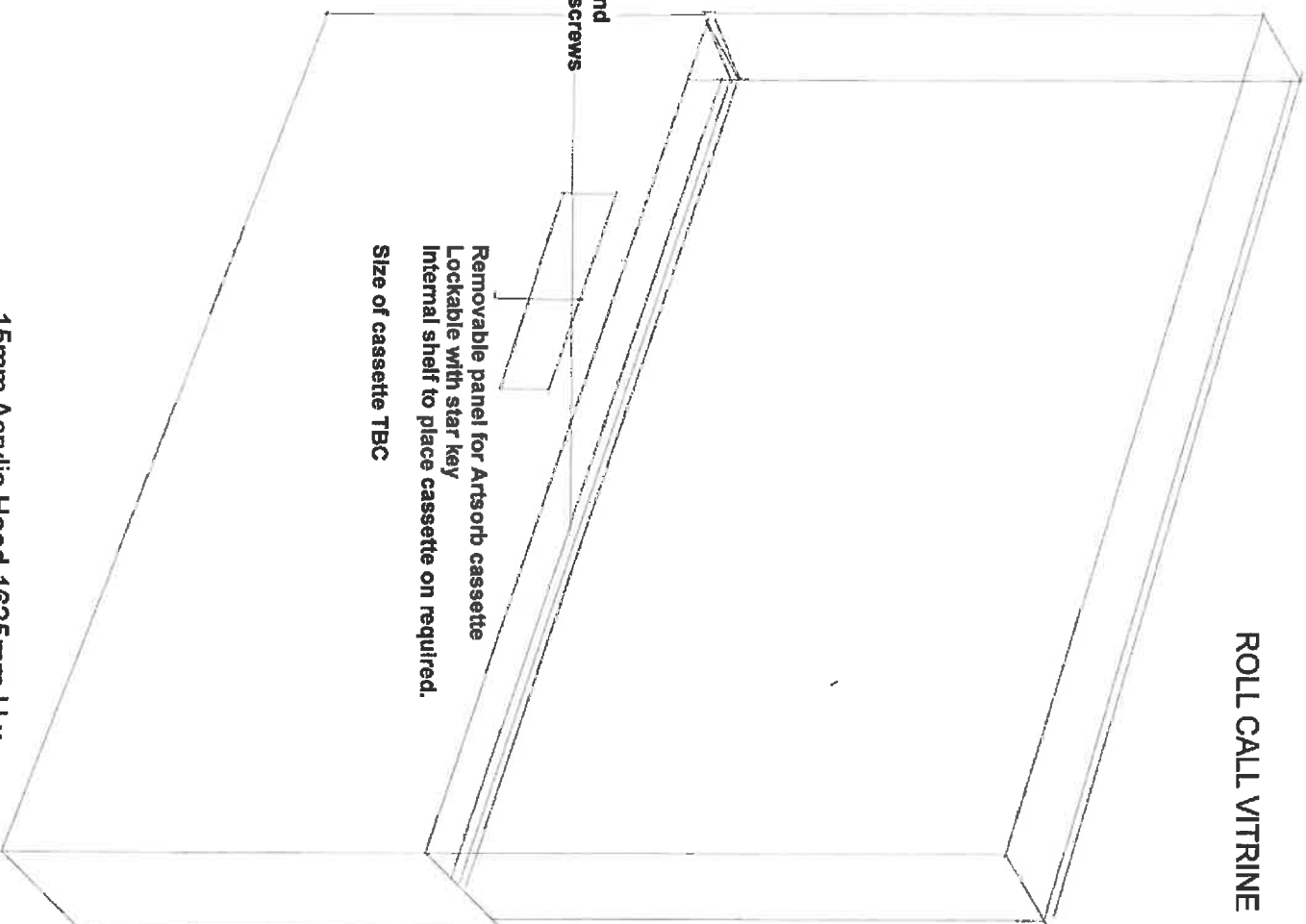
side view of interactive casing



plan view of
interactive unit

1625mm H x 2540mm L x 230mm D

ROLL CALL VITRINE

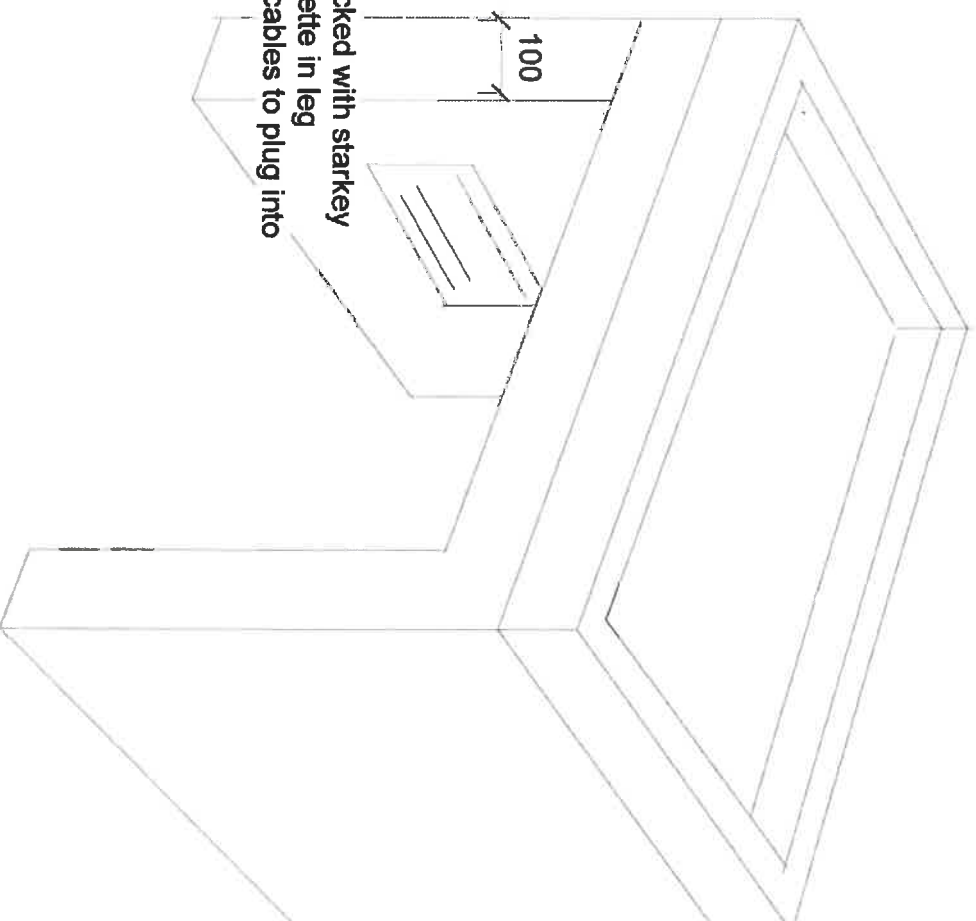


Hood to be 3 sided with open end
Attached to base with security screws
counter sunk and capped

Removable panel for Artsorb cassette
Lockable with star key
Internal shelf to place cassette on required.

Size of cassette TBC

15mm Acrylic Hood 1625mm H x
2540mm L x 225mmD secured to
ZMDF backboard with Daisy head security screws.
Painting is secured to the ZMDF backboard.
Hood supported by plinth that rests on the floor, to distribute
the weight. Floor plinth approximately 1100mm H, with depth to
match the hood.
ZMDF backboard and plinth to be painted with dacrylite and
Dulux water based emulsion in Heritage Range
Cherry Truffle colour.



vented panel locked with starkey
for artsorb cassette in leg
and access for cables to plug into
the floor box

Cadogan Case

Height of base alone 800mm
Height from floor to underside of base 700mm
External Length of case: 1000mm
Internal length of case minimum 900mm
Width of case: 745mm external
Width of case internal, minimum 645mm
External hood height 115mm
Internal height of hood 100mm

ZMDF painted with dacrylite varnish and Dulux
Heritage Cherry Truffle emulsion

Case to contain LED strip around perimeter
beneath top border edge of 30mm
baseboard to be covered with Baumann fabric
to be supplied.