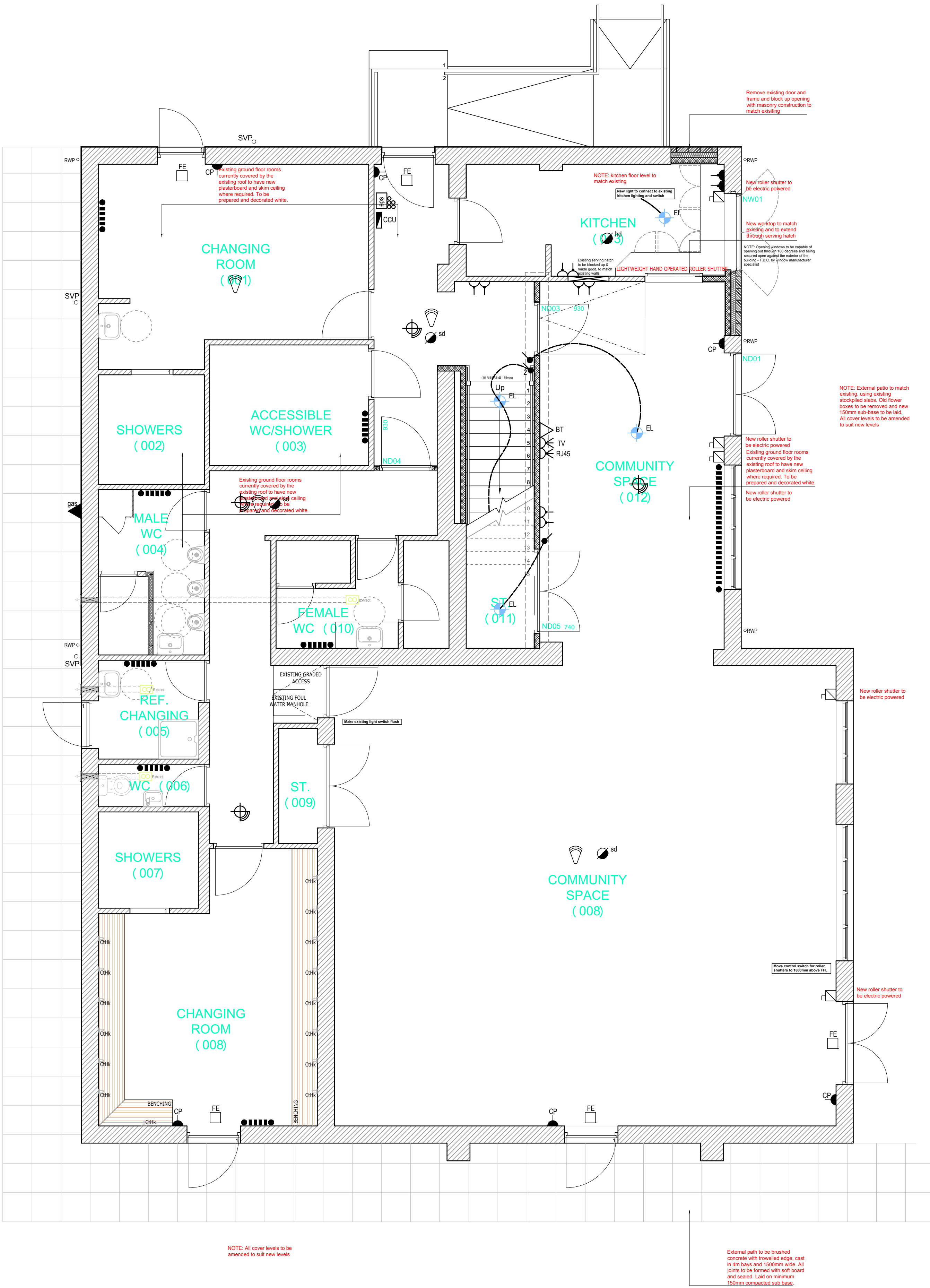


- NOTES:
- All dimensions shown are in millimetres, unless otherwise stated. Any use of these dimensions, other than for general reference, should be the subject of third party checking on site.
 - It is essential this drawing is read in conjunction with all other drawing and documents in the EKV01773 series.
 - Any work that is carried out on the basis of this drawing should be carried out to all relevant British Standards and associated manufacture's instructions/recommendations.
 - Contractors carrying out any work associated with this drawing, will be deemed to include in their price all work intrinsically necessary in addition to the works detailed and also for verifying all dimensions prior to work commencing.



ELECTRICAL LEGEND

- double switched high level socket outlet
- double switched socket outlet
- light switch
- 2 way, or more, light switch (no. refers to no. of switches)
- tv aerial socket (see detail for heights)
- CAT 5 cable network with RJ 45 data socket
- energy efficient recessed light fitting. LED lamps to all fittings
- wall mounted external light fitting, mounted at 1850 above Ground FFL
- ceiling / wall mounted heat detector alarm to BS5839 Part 6:2013 to be mains operated. Lobby areas to be interlinked
- ceiling / wall mounted smoke detector alarm to BS5839 Part 6:2013 to be mains operated. Lobby areas to be interlinked
- Sounders
- Fire Escape Signage to be in accordance with the Health and Safety (Safety signs and signals) Regulations 1996 or BS 5499 Part 1, 2002
- Manual fire call point
- PIR sensor with timed overrun to be linked to lighting in communal areas
- Indicative radiator / towel radiator
- consumer unit 1800 above ffl
- door entry system
- Emergency light fitting
- Single phase isolator; requirements to be confirmed by manufacturer

- NOTES:
- DETAILS OF EXISTING ELECTRICAL WATER HEATERS AND PROPOSED REPLACEMENT SYSTEM T.B.C. BY M&E SPECIALIST AND PLUMBING/ ELECTRICAL SUB-CONTRACTORS.

D	2017.04.20	MINOR AMENDMENTS, TO INCORPORATE CLIENT COMMENTS	CJS	JLH
C	2017.04.13	POWER REQUIREMENTS FOR ROLLER SHUTTERS ADDED AND REMOVED FROM CHANGING ROOM TOILET	JLH	CJS
B	2016.06.22	REVISED ISSUE	SG	XX
A	2016.06.17	REVISED ISSUE	SG	XX
O	2016.06.01	BR ISSUE	SG	TM
Rev	Date	Description of Revision	Drawn	Checked



t: +44 (0)1332 896272 e: info@ekvdesign.co.uk w: www.ekvdesign.co.uk	
Drawing status:	
BUILDING REGULATIONS	
Project title:	ASTON-ON-TRENT PAVILION EXTENSION
Drawing title:	GROUND FLOOR M&E PLAN
Drawing No:	EKV01773 - BR - 500
Revision:	D

© EKV Design Ltd 2016. All rights reserved. No part of this document may be reproduced, stored in a retrieval system or transmitted in any form or by any means, electronic, mechanical, photocopying, recording or otherwise, without the prior written permission of the copyright owner.

GROUND FLOOR M&E PLAN, SCALE: 1:50 @ A1