

THE DETAILS DEPICTED ON THIS DRAWING ARE THE COPYRIGHT TO CREATE CONSULTING ENGINEERS LTD AND MAY NOT BE REPRODUCED WITHOUT PERMISSION. THIS DRAWING MUST NOT BE RE-ISSUED, LOANED OR COPIED WITHOUT THE CONSENT. ERRORS OMISSIONS AND DISCREPANCIES SHOULD BE REPORTED TO THE ORIGINATOR IMMEDIATELY.

ALL DIMENSIONS TO BE CHECKED BEFORE SITE OR OFF-SITE FABRICATION BY THE CONTRACTOR, HIS SUB-CONTRACTOR OR SUPPLIER.

DO NOT SCALE PLANS - USE FIGURE OR GRID DIMENSIONS WHERE GIVEN. ANY DEVIATION FROM THE DRAWING IS TO BE REPORTED TO THE ORIGINATOR IMMEDIATELY.

STRUCTURE, STRUCTURAL MEMBERS & GEOTECHNICAL INVESTIGATIONS ARE TO BE CARRIED OUT & APPROVED BY THE APPOINTED STRUCTURAL ENGINEER. ANY DEVIATIONS TO THESE ELEMENTS ARE TO BE REPORTED TO THE APPOINTED CONSULTANT IMMEDIATELY.

IF IN DOUBT ASK !

NOTES:

- 

MAGNETIC DOOR HOLDER - RS COMPONENTS 774-8229 12 VOLT DOOR MAGNET 600lb
- 

EMERGENCY DOOR RELEASE BREAK GLASS - RS COMPONENTS 741-8284 GREEN BREAK GLASS CALL POINT
- 

PAXTON ACCESS TOUCHLOCK KEYPADS - KP SERIES K50
- 

PAXTON ACCESS SWITCH2 CONTROLLER - 12V1APSU, PLASTIC ENCLOSURE
- 

FUSED CONNECTION UNIT - MK K1080WHI
- 

PAXTON ACCESS EXIT BUTTON - E75

MAGNETIC DOOR HOLDERS TO BE CONNECTED TO THE PAXTON ACCESS SWITCH2 CONTROLLER AS NORMALLY OPEN. EMERGENCY DOOR RELEASE BREAK GLASS TO BE CONNECTED IN SERIES WITH THE MAGNETIC DOOR HOLDER TO INTERRUPT THE ELECTRICAL SUPPLY.

KEYPADS, EMERGENCY DOOR RELEASE BREAK GLASSES AND EXIT BUTTONS TO BE MOUNTED AS FAR AS PRACTICABLE AT 1200mm FROM AFL TO BASE OF THE UNIT.

PAXTON SWITCH2 CONTROLLERS ARE TO BE MOUNTED AT HIGH LEVEL ADJACENT TO THE SUPPLY FUSED CONNECTION UNITS.

THE LOCATION AND INSTALLATION OF THE ACCESS CONTROL EQUIPMENT IS TO BE CO-ORDINATED ON SITE.

TOKENS WILL NEED TO BE SUPPLIED (THIS CAN BE CARD OR KEYFOB - CUSTOMERS CHOICE) AND ARE AVAILABLE IN QUANTITIES OF 10, 25, 50 AND 100. MCA TO CHOOSE TYPE AND QUANTITY OF TOKENS.

DESIGNERS RESIDUAL HAZARDS
MECHANICAL, ELECTRICAL & PUBLIC HEALTH

IN ADDITION TO THE HAZARDS / RISKS NORMALLY ASSOCIATED WITH THE TYPES OF WORK DETAILED ON THIS DRAWING, THE FOLLOWING DESIGNERS RESIDUAL HAZARDS HAVE BEEN IDENTIFIED AND SHOULD BE ADDRESSED/MANAGED BY THE CONTRACTOR. ANY HAZARDS THAT CANNOT BE ADDRESSED AND REMOVED SHALL BE CARRIED FORWARD AS PART OF THE HEALTH AND SAFETY HANDOVER DOCUMENTATION.

	HAZARD	DESCRIPTION
1	N/A	N/A
2		

IT IS ASSUMED THAT ALL WORKS WILL BE CARRIED OUT BY A COMPETENT CONTRACTOR WORKING, WHERE APPROPRIATE, TO AN APPROVED RISK ASSESSMENT AND METHOD STATEMENT.

P1.2	28/09/2017	CHANGES AS PER MCA REQUESTS	NGS	JDB
P1.1	18/09/17	KEY PAD SELECTION CHANGED	NGS	JDB
REV	DATE	DESCRIPTION	DRAWN	CHECKED

CLIENT
MARITIME & COASTGUARD AGENCY

PROJECT
SHRUB END CLINIC
ICENI WAY
COLCHESTER

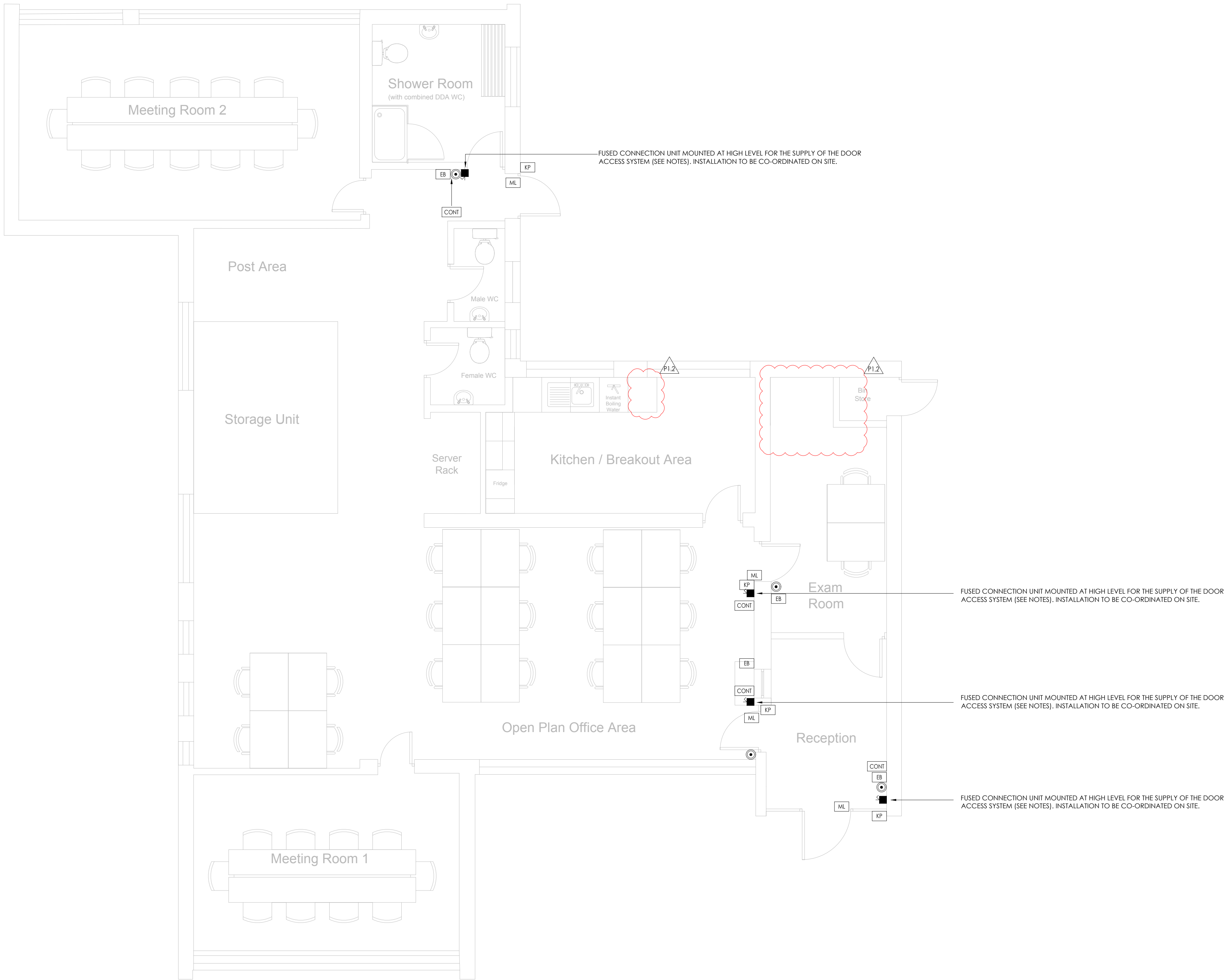
DRAWING TITLE
PROPOSED
ELECTRICAL ACCESS CONTROL
SHEET 01 OF 01

DATE	DESIGNED	DRAWN	CHECKED	SCALE(S)
08/08/2017	NGS	NGS	JDB	1:50 @A1

create
CONSULTING ENGINEERS LTD
NORWICH
15 PRINCES STREET,
NORWICH,
NORFOLK, NR3 1AF,
TEL: 01603 877010

FOR TENDER

PROJ	ORIG	ZONE	LEVEL	TYPE	ROLE	CLASS	PRESENT	NUMBER	STATUS	REVISION
1321	CCE	00	GF	DR	E	75	P	0801	D2	P1.2



1 PROPOSED ELECTRICAL ACCESS CONTROL
Scale : 1:50