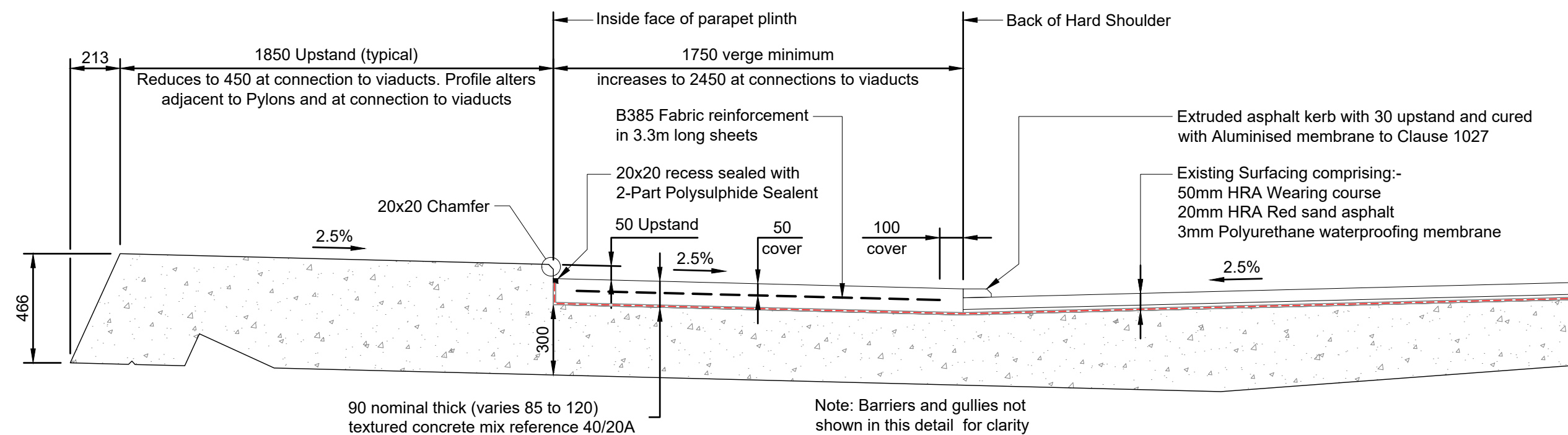


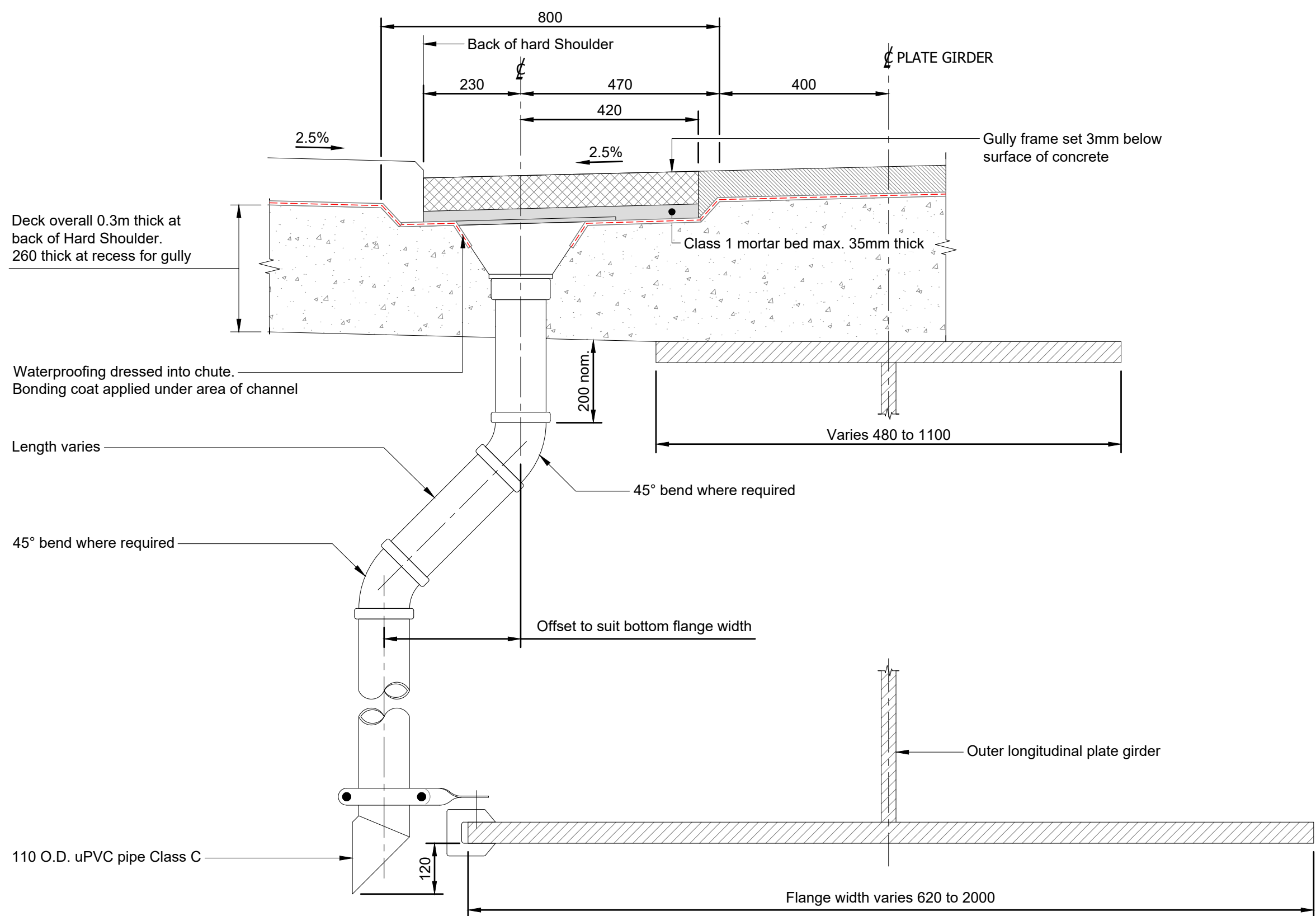
Typical Cross Section Through Shoots Bridge Deck

Scale 1:50



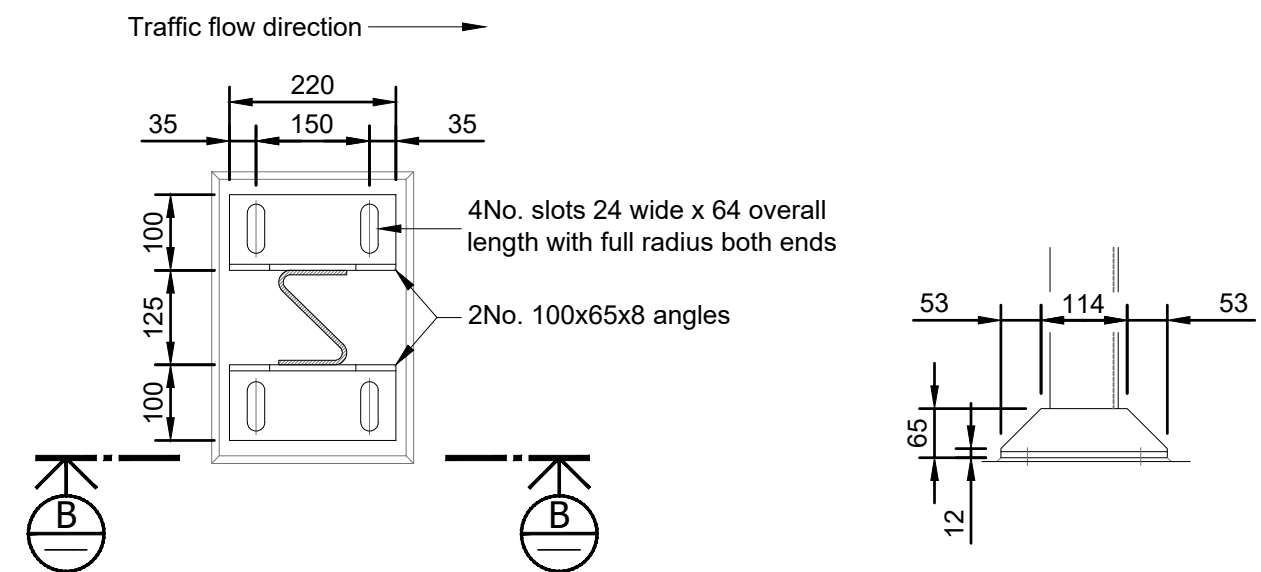
Shoots Bridge Verge Typical Detail

Scale 1:20



Cross Section
Shoots Bridge Gully Chute

Scale 1:10

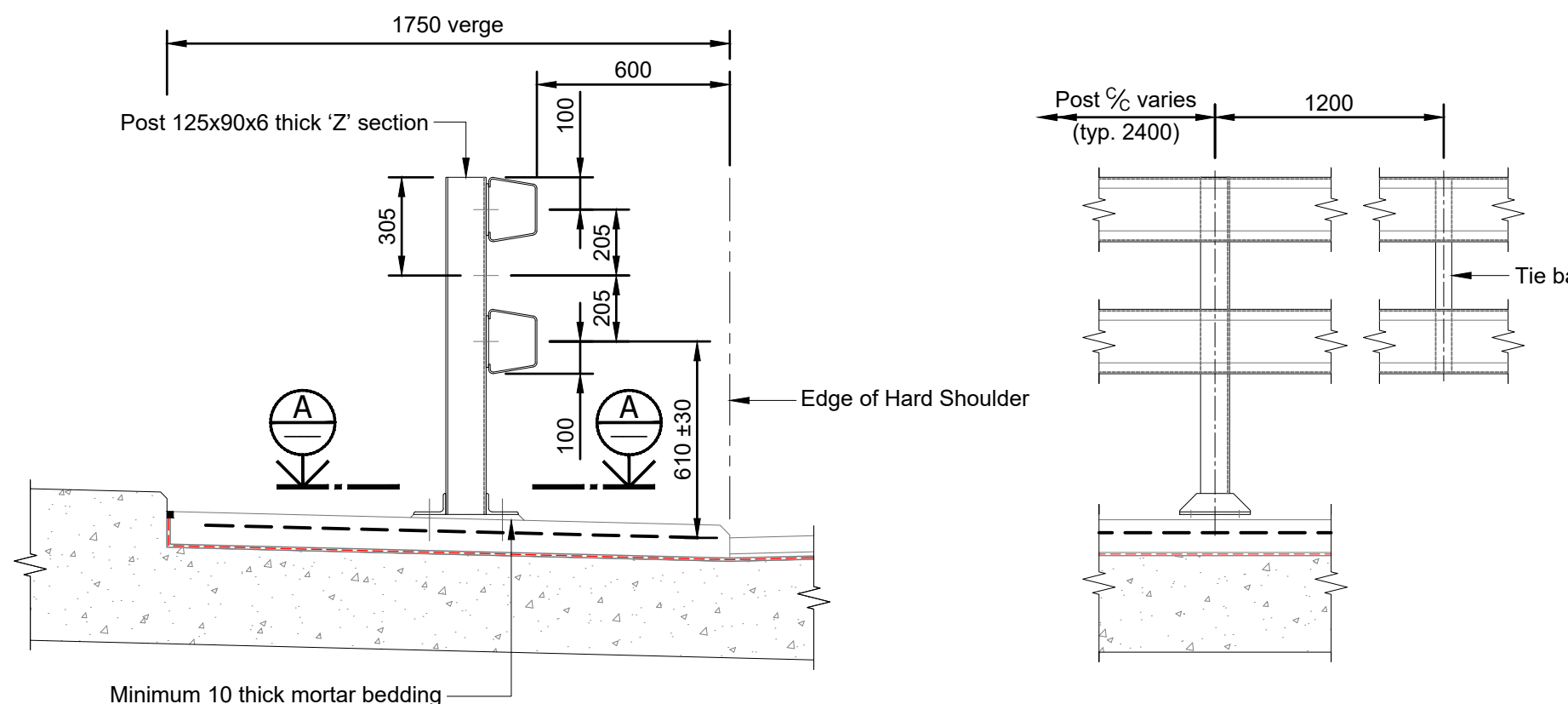


Section A - A

Scale 1:10

Elevation B - B

Scale 1:10

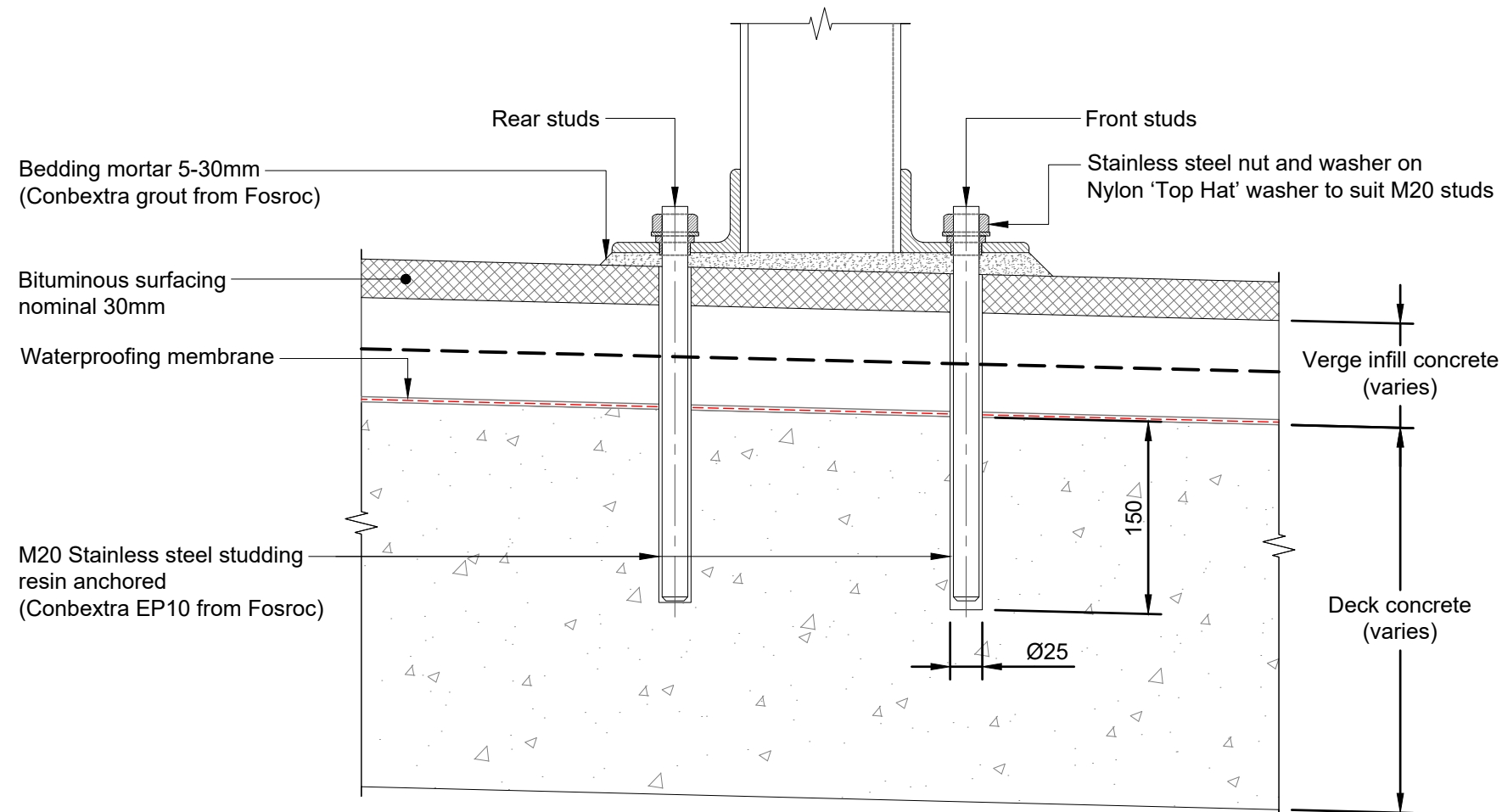


Typical Cross Section at Verge
Showing DROBB Safety Fence

Scale 1:20

Typical Traffic Side Elevation

Scale 1:20



Typical Verge Anchoage Detail
Main Bridge

Scale 1:5

NOTES

1. Do not scale from this drawing.
2. All dimensions are in millimeters unless otherwise stated.
3. This drawing is to be read in conjunction with the all drawings in the SBIM-POW-TO824 Series.
4. Dimensions are taken from record drawings and have not been confirmed by measurement.

KEY:

RESIDUAL DESIGN HAZARDS

(The following information has been collected from Preconstruction Information and the Amey CDM Hazard Management Process).
Residual Design Hazards:
HS-01 - Striking existing utilities
HS-02 - Temporary instability of bridge as a result of concrete removal
HS-03 - Risk of Injury from protruding reinforcement
HS-04 - RA1 Procedure limitations
HS-05 - Reduction in deck thickness due to hydro demolition
HS-06 - Depth of deck when breaking out concrete
HS-07 - Trafficking of the deck following treatment

P01	For Tender	AD	TB	LG	12.04.24
Rev	Revision details	Drwn	Chkd	Appd	Date

Designed:	Amey	Date:	12.04.2024
Drawn:	Alex Davey	Date:	12.04.2024
Checked:	Tom Bolton	Date:	12.04.2024
Approved:	Laurence Green	Date:	12.04.2024

Copyright in this design © Amey

Amey

www.amey.co.uk



Project Name
M4 Prince of Wales Bridge
Resurfacing Strategy

Drawing Title
Prince of Wales Bridge
Miscellaneous Details - Sheet 1 of 2

Original Drawing Size : A1	Scale : As Shown
Dimensions : Millimetres	

Drawing Status For Tender	Suitability S2
------------------------------	-------------------

Drawing No SBIM-POW-TO824-DWG-0003	Rev P01
---------------------------------------	------------