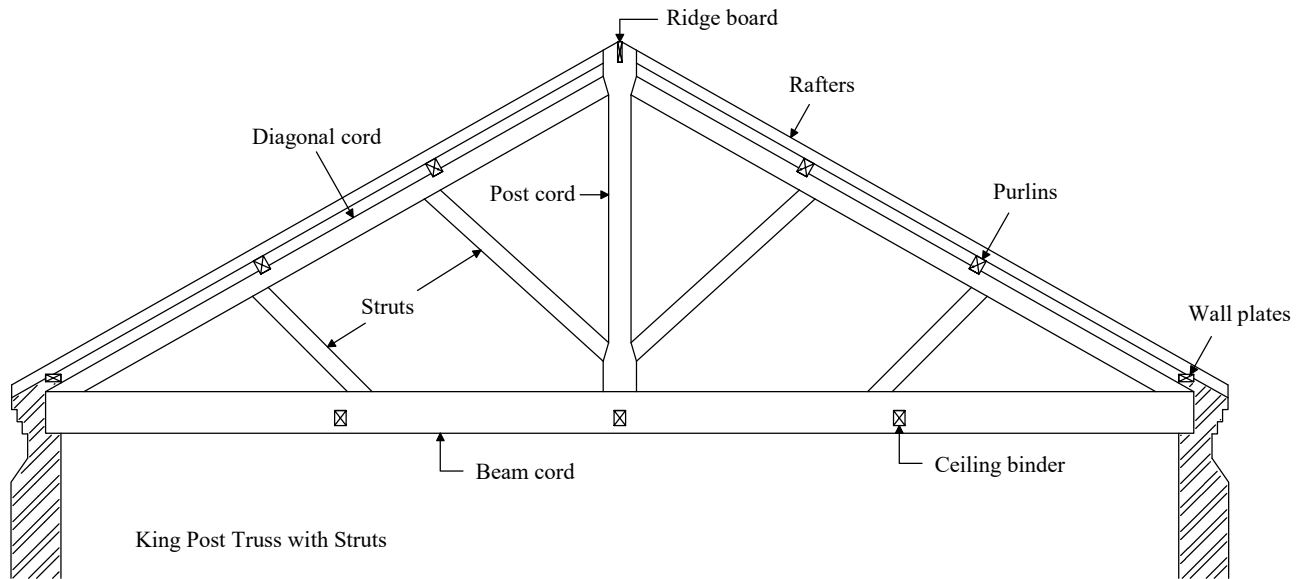


## King Post Truss Elevation



King Post Truss with Struts

275 x 75mm beam cord

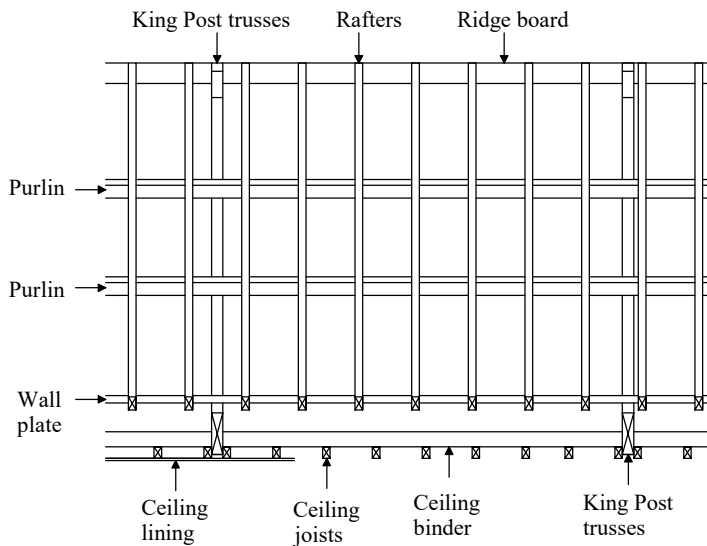
225 x 75mm post cord reducing to 150 x 75mm between connection shoulders

125 x 75mm diagonal cords

115 x 75mm struts

Metal stapping at beam cord to diagonal cord connections and at beam cord to post cord connection

## Roof Side Elevation



## Roof Construction

Roof pitch 29.5 degrees

King Post trusses at maximum 2720mm centres - clear span 7400mm

100 x 50mm wall plates bedded onto brickwork

135 x 25mm ridge board fitted in slot of post cord of King Post Truss

75 x 50mm rafters at maximum 375mm centres - maximum clear span 1500mm

100 x 75mm purlins at maximum 1500mm centres - maximum clear span 2645mm, notched over diagonal cord of King Post Truss

## Roof Tiling

Marley Ludlow Plus concrete interlocking roof tiles on timber battens with type 1F roofing felt underlay

## Ceiling Construction

75 x 50mm ceiling joists at maximum 330mm centres - clear span 1850mm

100 x 75mm ceiling bearers at 1850mm centres - maximum clear span 2645mm

Plasterboard lining with plaster skin finish

75mm fibreglass insulation between the ceiling joists