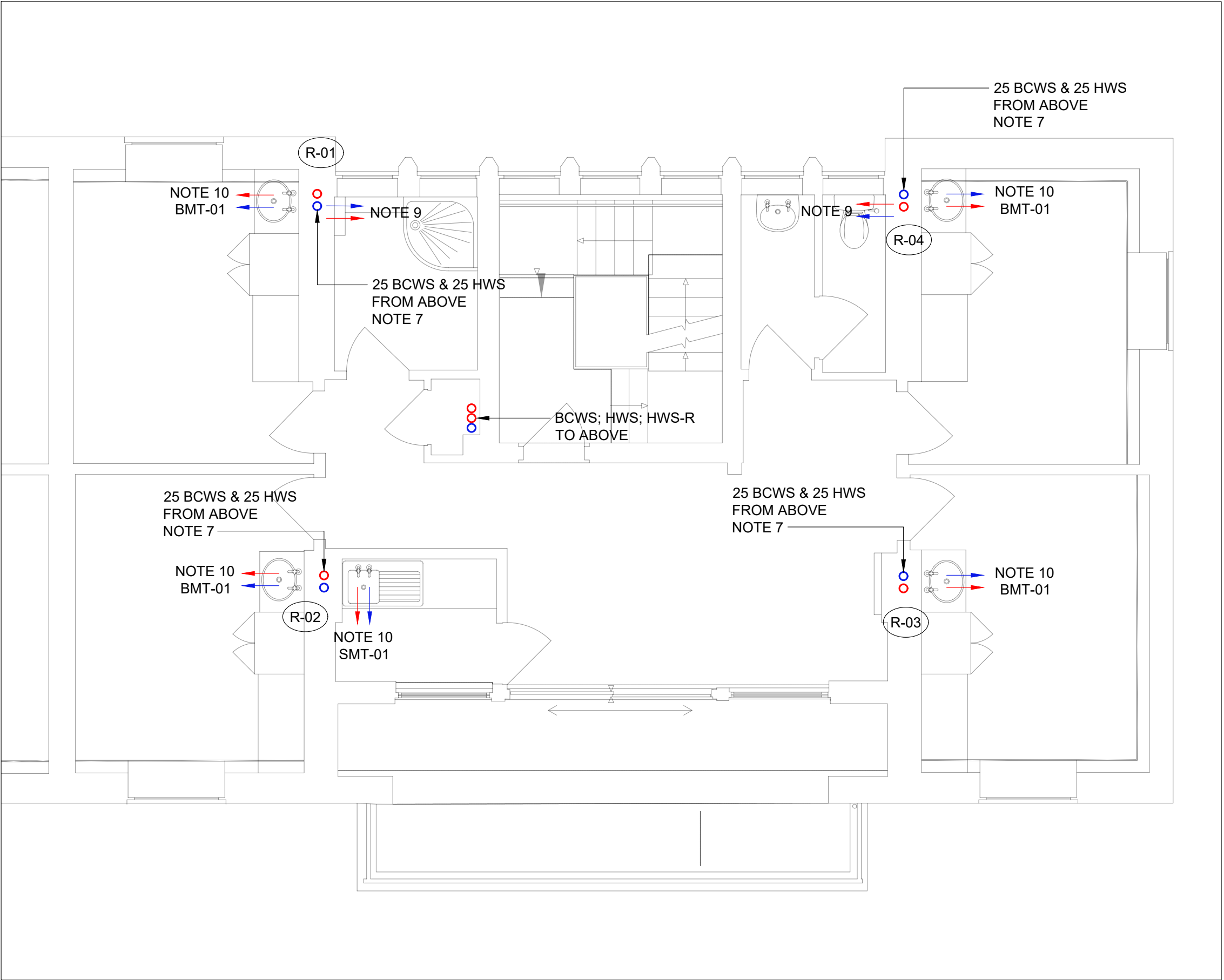
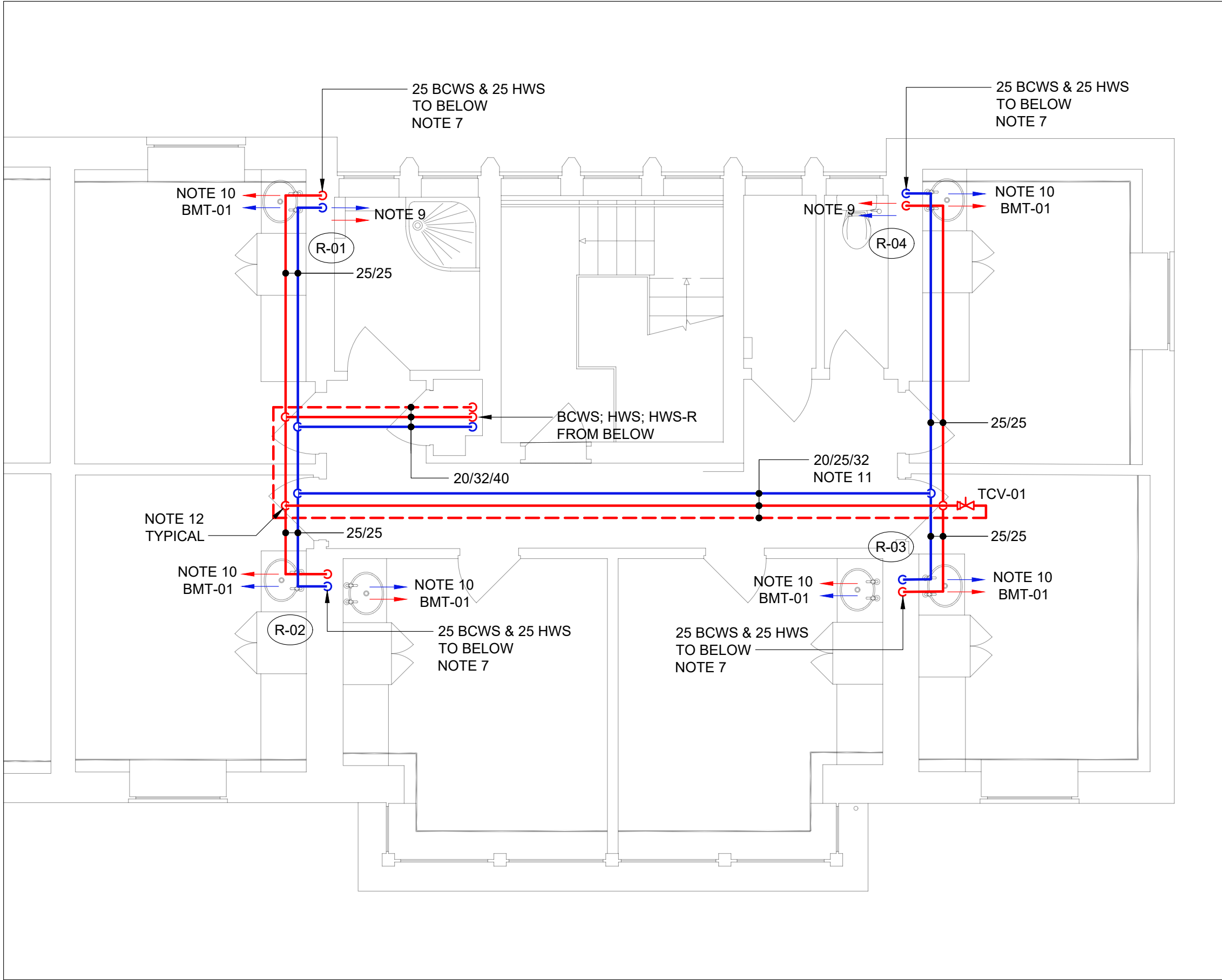


GROUND FLOOR



FIRST FLOOR



SECOND FLOOR

NOTES

1. READ THIS DRAWING IN CONJUNCTION WITH THE COVERSHEETS & SCHEDULES
2. ALL DIMENSIONS ARE IN mm
3. DO NOT SCALE FROM THIS DRAWING
4. FLOOR PLANS DO NOT SHOW ALL PIPE SIZES, COMPONENTS & ACCESSORIES, REFER FLOW DIAGRAMS
5. TO UNDERGROUND INFRASTRUCTURE; REFER TYPICAL CONNECTION DETAIL
6. NOT USED
7. NEW SERVICES IN EXISTING RISER LOCATION;
PHASE 1: TEMPORARY CONNECTION TO EXISTING SERVICES AS THEY EXIT GROUND FLOOR SLAB
PHASE 2: REMOVE TEMPORARY CONNECTION WITHOUT LEAVING A DEAD LEG & FEED FROM NEW SERVICES ON SECOND FLOOR
8. DROP FROM HIGH LEVEL WITHIN THICKNESS OF WALL LINING; EXIT THROUGH WALL PENETRATIONS AT 150 AFL; CONTINUE INSULATION THROUGH WALL PENETRATIONS; BUILDING ISOLATION & DRAIN VALVES BEHIND ACCESS PANEL AT LOW LEVEL
9. 15/15 NEW CONNECTIONS TO EXISTING POINTS OF USE; FIT FLOW RESTRICTORS TO FIXTURES THAT DO NOT CONFORM TO THE SPECIFIED MAXIMUM FLOW RATE LIMITATIONS
10. NEW BASIN/SINK, MIXER TAP; WASTE & TRAP IN EXISTING LOCATION; FOR BASIN/SINK SPECIFICATION REFER ARCHITECTURAL; 15/15 NEW CONNECTIONS TO MIXER TAP; 32/40 CONNECTION TO EXISTING DRAINAGE
11. RUN PIPEWORK AS HIGH AS REASONABLY POSSIBLE IN CORRIDOR
12. MINIMUM ELEVATION CHANGE FOR PIPES TO CROSS WITH 20 CLARENCE AFTER INSULATION

LEGEND

| | |
|--------|--|
| LTHW-F | Low Temperature Heating Water - Flow |
| LTHW-R | Low Temperature Heating Water - Return |
| GWS | Gray Water Services |
| BCWS | Boosted Cold Water Service |
| MCWS | Mains Cold Water Service |
| HWS | Hot Water Service |
| HWS-R | Hot Water Service - Return |
| DRN | Drain |
| DRN-CR | Drain - Chemical Resistant |
| GAS | Natural Gas |
| ACR | Air-conditioning/Refrigeration |
| ----- | Control Link |
| AP | Access Panel |
| DG | Door Grille |
| DG-FR | Door Grille - Fire Rated |
| EXT | Extract Air |
| EXH | Exhaust Air |
| FD | Fire Damper |
| FFL | Finished Floor Level |
| FSD | Fire & Smoke Damper |
| ID | Iris Damper |
| OA | Outside Air |
| OBD | Opposed Blade Damper |
| SA | Supply Air |
| SBD | Single Blade Damper |
| UFH | Under Floor Heating |

| Rev | Description | Date |
|-----|-------------|----------|
| T00 | For Tender | 23/11/06 |
| | | |
| | | |
| | | |
| | | |
| | | |

| | |
|---------|--|
| Client | Bedford College |
| Site | Shuttleworth College Old Warden Park Biggleswade SG18 9DX |
| Project | Halls of Residence Fit Out |

| | |
|--|---------------------------------------|
|  www.pandaces.co.uk T: 01908 991130 | |
| Drawing Title | Clayton Hall Hot & Cold Water Plan |
| Drawing Ref | 02-15 M-LX-07 |
| Revision | Date |
| T00 | 2023/11/06 |
| Scale | Status |
| 1:50 at A1 | For Tender |