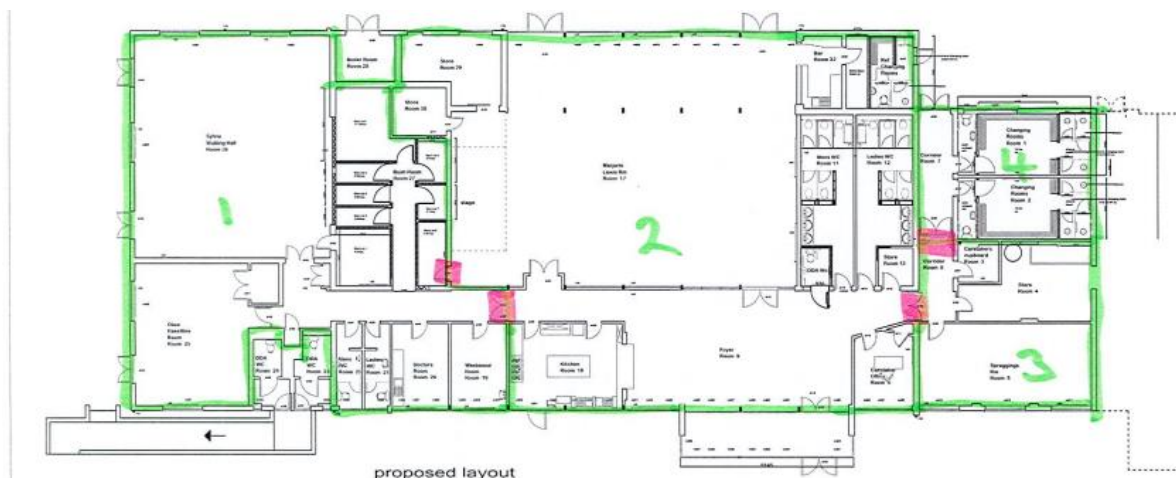


Specification for Fire Door Replacement in Hellesdon Community Centre



Removal of existing doors and installation of 4no. fire doors to create 4 areas of compartmentalisation in Hellesdon Community Centre.

- 1) Double FD30 fire door with vision panels near the kitchen, leading down the main corridor.
- 2) Double FD30 fire door with vision panels outside the caretakers' office.
- 3) Double FD30 fire door with vision panels in the corridor leading down to the changing rooms.
- 4) Single FD30 fire door leading from the Marjorie Lewis to the Bush storage room.

All double doors are to come with wired door retainers to hold open in normal circumstances and close in the event of fire alarm activation. The single door from the Marjorie Lewis Room to the Bush Room does not require this as it will be closed under normal circumstances.

Works to be programmed in at a time which is mutually convenient and will allow the building to remain open and operational during works.

Prices are to include all aspects of creating an effective fire door compartmentalisation. This will include, but not limited to:

- 1) Supply and installation of fire doors and all required frames and ironmongery.
- 2) All connections to allow double doors to remain open during normal use.
- 3) All connections to fire alarm system
- 4) Commissioning
- 5) Making good any building work and removal of waste

Site visit is recommended to familiarise with building. To arrange a site visit, please contact Faye LeBon on 01603 301751 or clerk@hellesdon-pc.gov.uk

All quotes are to be sent to Hellesdon Parish Council. These can be by post to:

For the Attention of the Clerk to the Council

Diamond Jubilee Lodge

Wood View Road

Hellesdon

Norwich

NR6 5QB

Or by email to clerk@hellesdon-pc.gov.uk

Quotes to be received by midday on Friday 18th August