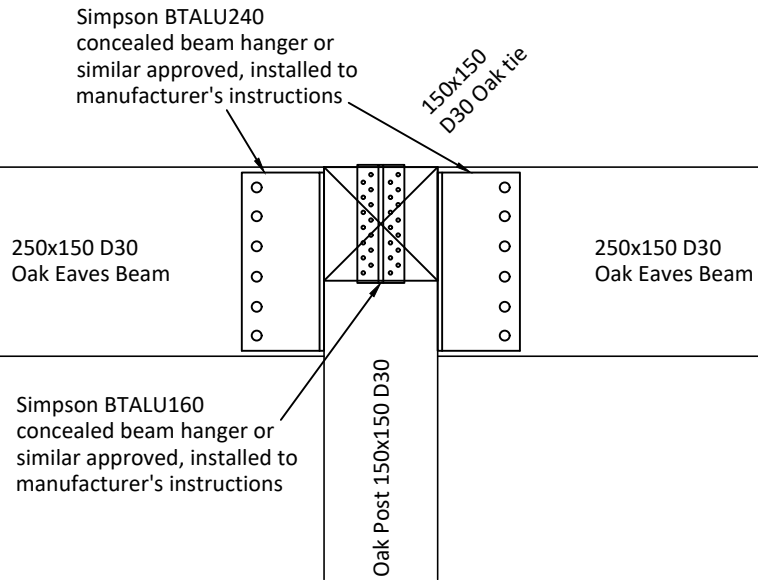


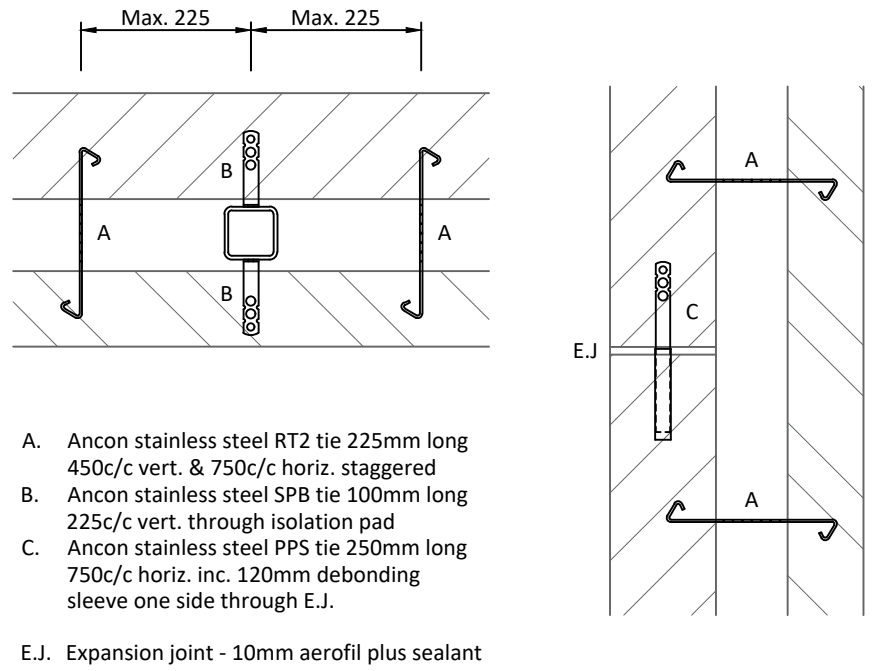
Ground Floor Plan

Lintel Schedule		
Ref.	Lintel Model	Notes
ED1, W1, W2	Catnic CX90/125 continuous	150mm end bearing
ED2, W3, W4	Catnic CX90/125 continuous	150mm end bearing
ED3, ED4	Catnic CG90/125 per ref.	150mm end bearing
W5, W6, W7	Catnic CG90/125 per ref.	150mm end bearing
W8	Catnic BSD140 inner Catnic CCS outer	150mm end bearing
W9, W10, W11, W12	Catnic CG90/125 per ref.	150mm end bearing
W13, W14	Catnic BSD140 inner Catnic CCS outer	150mm end bearing
O1	Catnic CG90/125	150mm end bearing
D1, D2, D3, D4	Naylor P140 per ref.	150mm end bearing

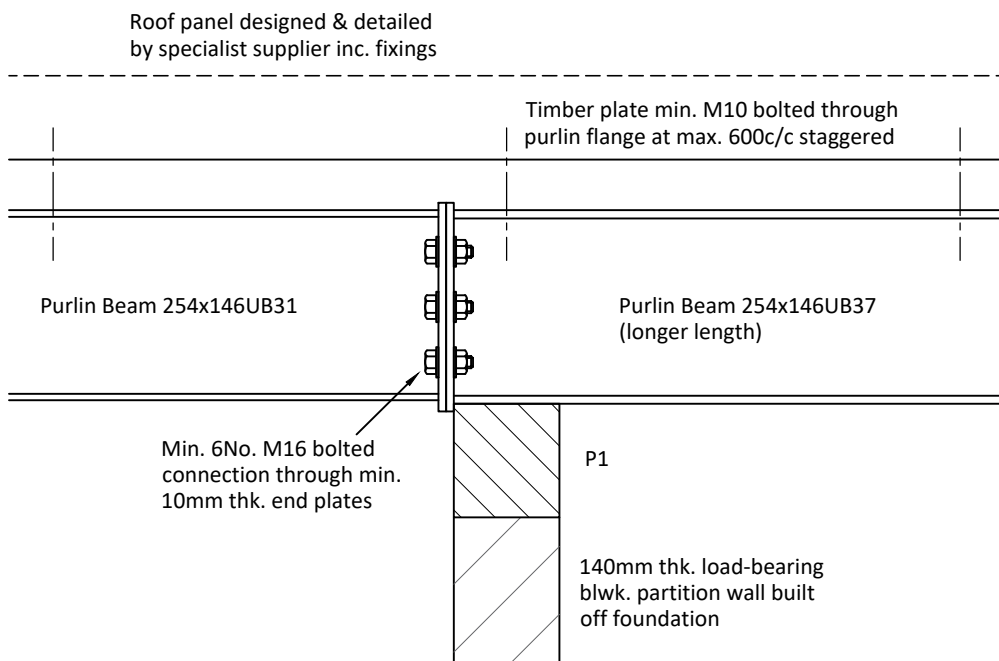
Note - Length of lintels to be determined by the contractor
- refer Architects drawings for opening dimensions



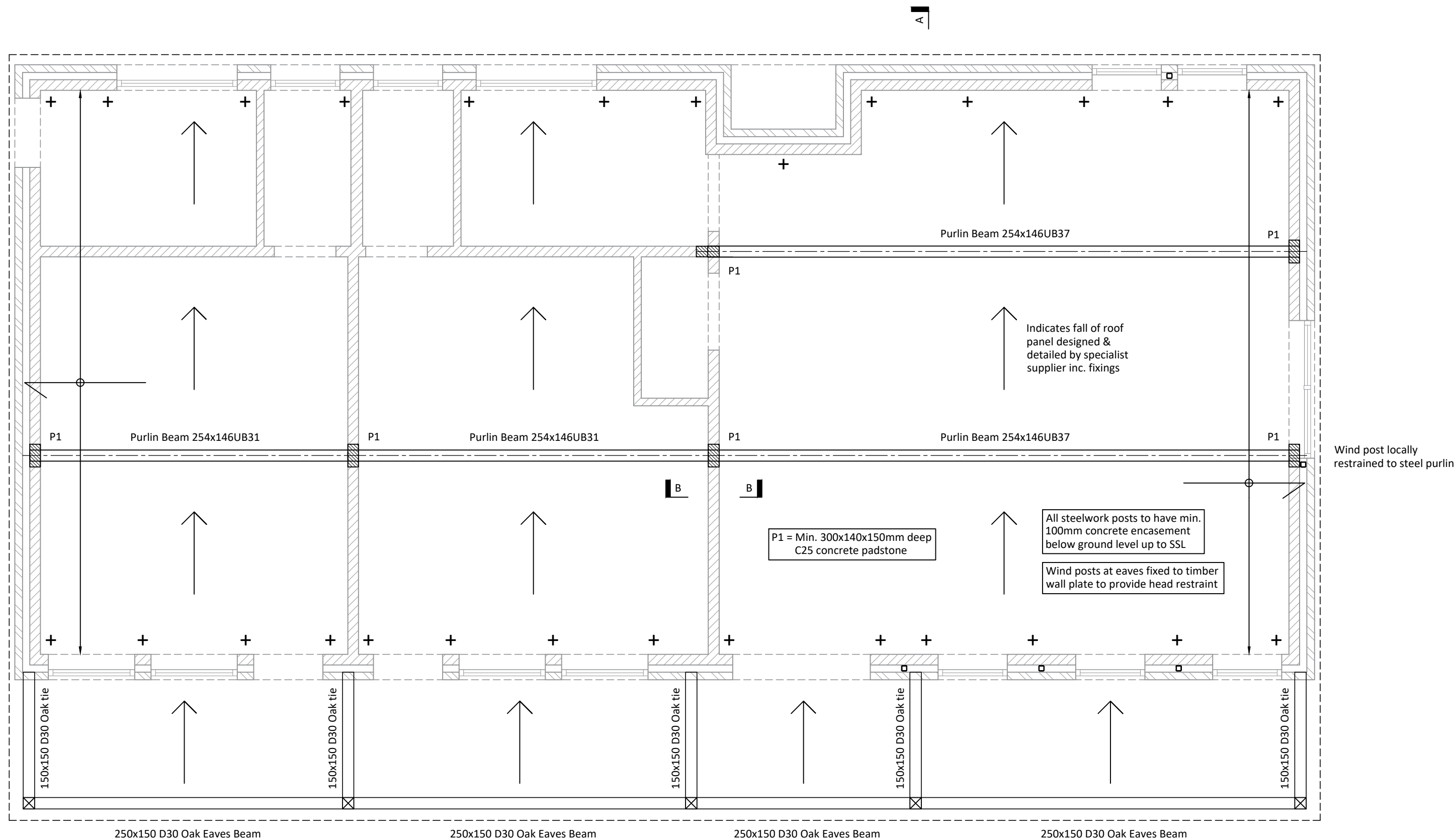
Typical Timber to Timber Connection Detail



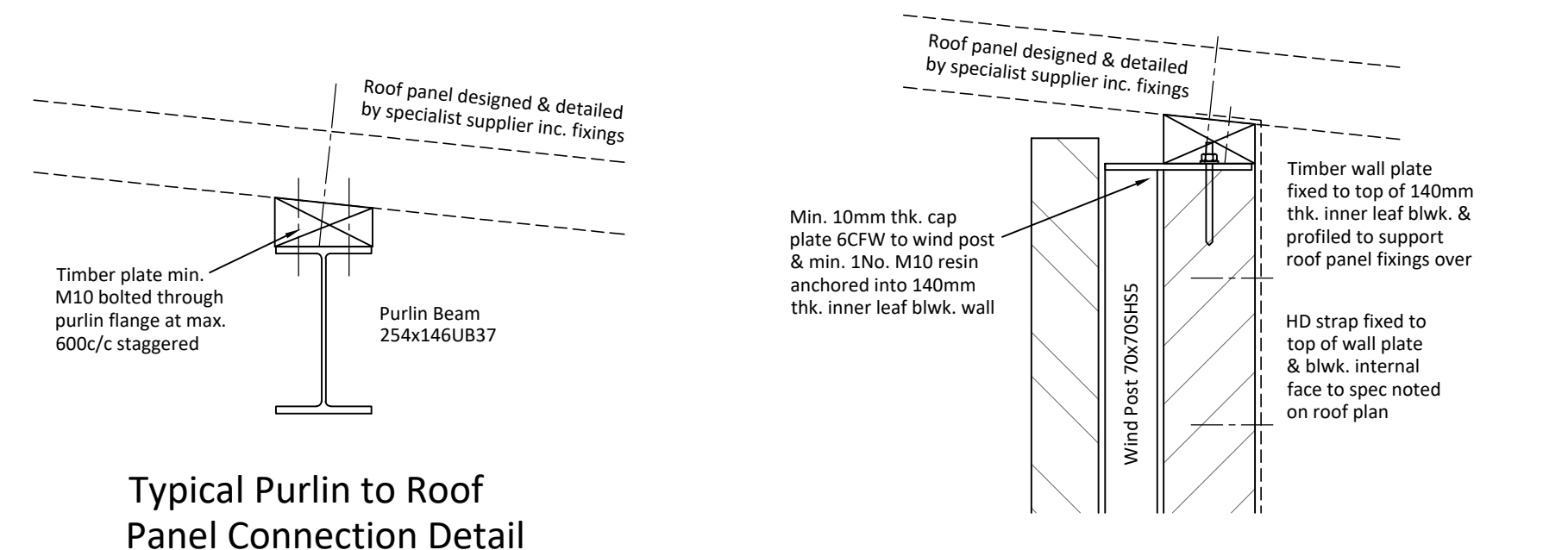
Typical Masonry Tie Details



Section B-B

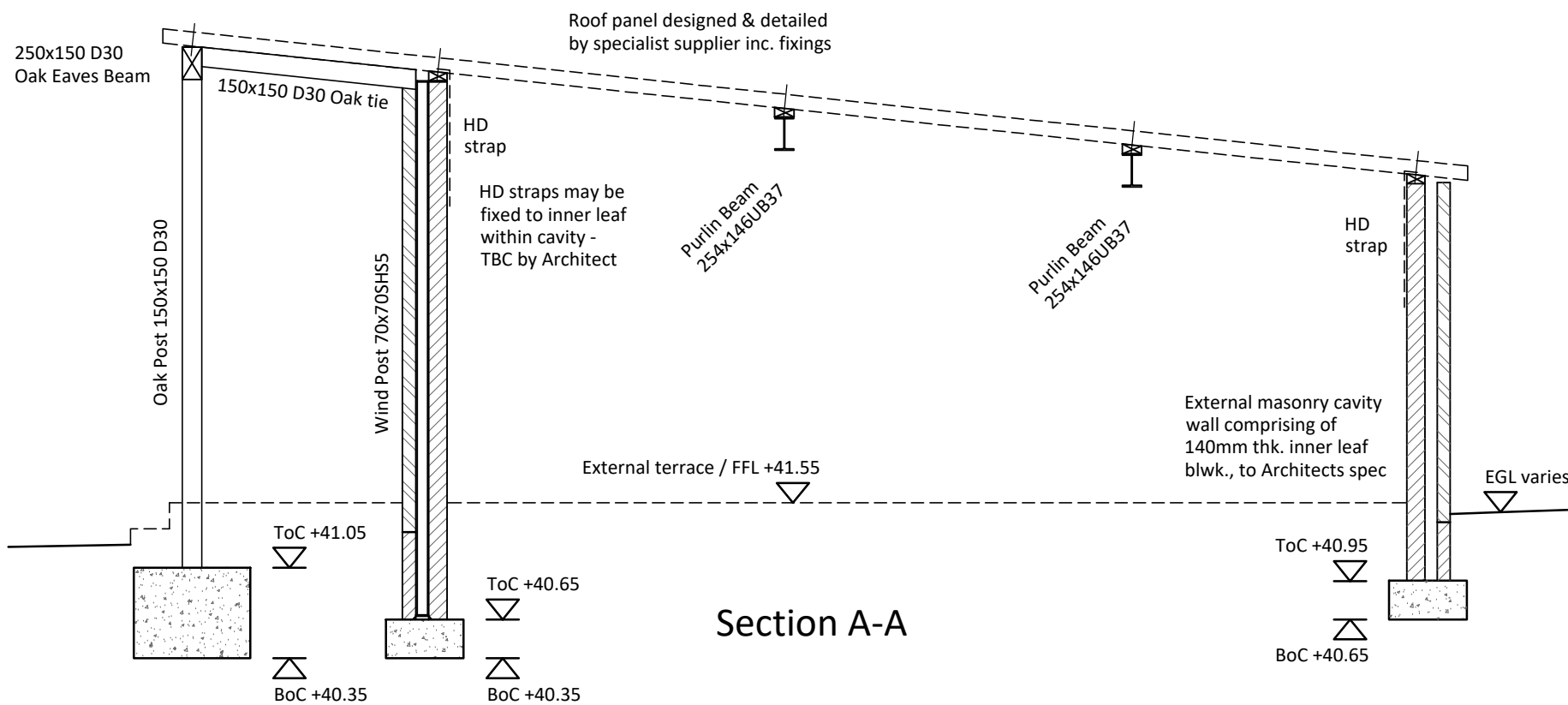


Roof Plan



Typical Purlin to Roof Panel Connection Detail

Wind Post Head Restraint Detail



Section A-A

A	Revised to suit comments	15.03.21
Revision	Details	Date
 Lych Gate Barn, Church Lane Carlton Le Moorland, Lincoln, LN5 9HS Tel : 01522 788000 Email : mail@stevegilmansdesign.co.uk		
Project	Proposed Sports Pavilion East Markham Playing Field Back Lane Markham	
Client	East Markham Parish Council	
Title	Ground & Roof Plans & Details	
Drawn	MP	Checked AF
Date	February 2021	Scale 1:50 / 1:10
Number	7198/02 A	Status Tender