



Annex D Site Clearance Example A Goods Vehicle Testing Station (GVTS)

This information has been generated to show an example of a site clearance and therefore should not be an expected source of material as this cannot be provided in most cases.

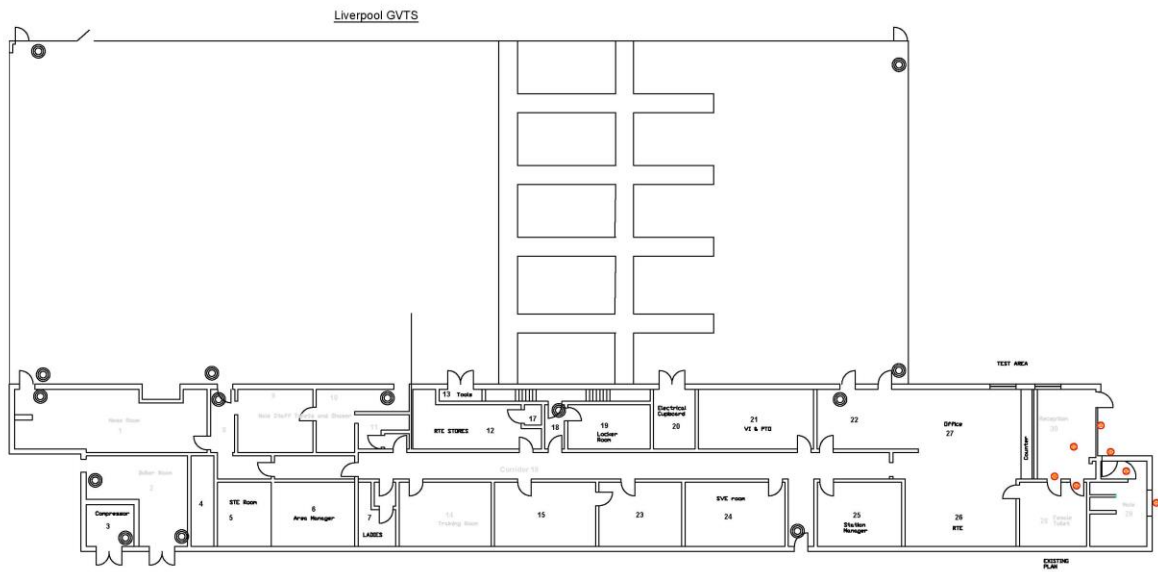
Therefore, there will be requirement to visit all locations prior to quotations being submitted.

This example site comprises of:

- Large main building (including a test hall with pits)
- Garage hanger (with pit)
- Portacabin
- Garage (this is missing from the plan below but present on site)

The whole site will require clearing (all internal as well as external areas).

Any list provided is never exhaustive and more item may become present, it would be for the supplier to ensure that the premises can be cleared on the same day unless prior notification has been made and agreed.



Furniture

Location	Unit No.	Description	Status
Reception Office	2	Desk - Left Hand Return 1600	
Reception Office	2	Desk - Left Hand Return 1600	
Reception Office	3	Small side desk 3 drawer	
Reception Office	1	Under Ped 3 drawer	
Reception Office	1	1600x800 Desk incl 3 drawer attached	
Reception Office	2	Filing Cabinet 4 drawer metal	
Reception Office	1	Filing Cabinet 3 drawer metal	
Manager's Office	1	Desk - Left Hand Return 1600	
Manager's Office	1	Desk - Left Hand Return 1600	
Manager's Office	1	Long ped 3 drawer	
Manager's Office	1	Under ped 3 drawer	
Manager's Office	1	Filing Cabinet 2 drawer metal	
Manager's Office	1	Tall metal cabinet 920x450x1820	
Canteen	4	Chairs	
Canteen	2	Tables	
Canteen	1	Small Fridge	
Canteen	1	Microwave	
Canteen	Various	Plates and cups	
Canteen	1	Kettle	
Office	2	1360x800 Desk incl 3 drawer attached	
Office	1	1600x1600 Right hand desk with ped attached	
Office	1	1600 Right hand desk	
Office	1	Under ped 3 drawer	
Office	3	Chairs (3 Operator and 1 Norm)	
Office	2	Filing cabinet 4 drawer	
Cleaner's Cupboard	1	Washing machine	
Cleaner's Cupboard	1	Clothes rail stand	
Extra Office/Locker Room	2	Filing cabinet 4 drawer	
Extra Office/Locker Room	1	Cupboard 1800x420x920	
Extra Office/Locker Room	4	1600 Bank of return desks	Dismantled
Extra Office/Locker Room	1	1800 Desk left hand return	
Extra Office/Locker Room	1	1600x800 Table	Dismantled
Extra Office/Locker Room	16	Clothes lockers 310x310	
Extra Office/Locker Room	3	Filing cabinet 4 drawer (Metal)	
Extra Office/Locker Room	2	1800 Desk right hand return	Dismantled
Extra Office/Locker Room	1	OHP stand & screen	
Extra Office/Locker Room	8	Standard meeting chairs	

Extra Office/Locker Room	2	Operator's chair	
Workshop	1	1830x750 old oily work bench with vice	
Workshop	1	1600x800 desk	
Workshop	2	Metal shelves 920x315x2200	
Workshop	2	Metal shelves 470x920x1920	
Workshop	1	Filing cabinet 2 drawer	
Workshop	1	Metal cabinet 920x460x1830	
Workshop	1	Operator's chair	
TEs' Office	1	1600x1600 desk including attached ped left side	
TEs' Office	1	1600 right hand return desk	
TEs' Office	1	1600x800 desk	
TEs' Office	3	Filing cabinet 4 drawer (Metal)	
TEs' Office	1	Sliding door cabinet 1000x470x1970	
TEs' Office	3	2200x920x315 (unsure as to item - may be a cupboard)	
Misc	-	Wooden shed/hut 3 sides only screwed to wall	
Misc	-	1800 right hand return desk	
Misc	-	Desk high pedestal short side	
Misc	-	Metal cabinet 920x460x1830	

Hazardous Waste

Litres/Millilitres/Grams	Description
300ML	Odour neutralizer - Jasmine F7110
750ML	Freshen up - Microbial odour controller & stain digester
5Litre	Veridical, bactericidal fungicidal washroom cleaner
400ML	Spray paint black
5Litre	Tellus B7 / HYD 37 / Air (No Label)
5Litre	Eagle Florcote - Yellow (APG08E51)
1Litre	Paint - Full Gloss - Blue
1 Half KG	Filler
5Litre	Acrylic Emulsion Floor Polish
600ML	Ant stop spray
300G	Ant stop powder
5Litre	Glass cleaner
1Litre	Castrol oil
5Litre	Toilet guard (HY02)
5Litre	Pearl pink soap
1Litre	Toilet cleaner
Deodorant can size	Trio 10
1Litre	Air tool oil
400ML	Autoday - screw loosening spray
750ML	Handy sanitizer spray
800ML	Ant spray
Nil	Fluorescent tube
20Litre	Oil drum
2.5Litre	Paint
1Litre	Paint
30L	Oil absorbent granules
-	Lorry battery
-	Lorry tyres

47kg	Gas bottle
-	Fridge (1 Tall & 1 Small)

Electrical Waste

Unit	Description
1	Big Brute vacuum cleaner (Adapted large metal oil drum on wheel trolley)
1	Water pump (Mains Operational)
1	Disk cutter
2	Drill
1	Skill saw
1	Glue gun
1	Battery drill
1	Power tools transformer
1	Extension lead 2 socket
1	Henry vacuum
1	Hose pipe on reel
1	Garden fork
10	Light bulbs (Screw fittings)
1	Small cylinder vacuum on wheels
1	Extension lead 2 socket (16m)
1	Tall fridge
1	Microwave oven
1	Cooker
10	Computers
20	Monitors "Computer"

General Waste

Unit	Description	Comments
1	Milk cage	
1	Large wheelie bin/spill kit	Spill kit to clear up spills
-	Sand	Small Skip's Worth
-	General rubbish	4No. Small skips' worth, this is generally office waste, and various signs or timber, rusty tools etc
1	Gas cooker	Standard Size

We attached indicative Random examples of previous site location clearances to show the types of items and condition of premises to be cleared



EXAMPLE PHOTO SHOWING
A SITE CLEARANCE AREA
COMPLETE: →

