

Notes:

- THIS DRAWING SHALL BE READ IN CONJUNCTION WITH ALL OTHER DRAWINGS, SPECIFICATIONS, SCHEDULES AND BUILDING MODELS INCLUDING SCHEMATICS. THE CONTRACTOR SHALL REFER TO THE ARCHITECTS DRAWINGS FOR SETTING OUT DETAILS/DIMENSIONS.
- THE MECHANICAL SERVICES INSTALLATIONS ARE DESIGNED TO COMPLY FULLY WITH THE BUILDING REGULATIONS STANDARDS, AND ARE DESIGNED IN ACCORDANCE WITH THE RECOMMENDATIONS OF THE CIBSE GUIDES, AS ISSUED BY THE CHARTERED INSTITUTION OF BUILDING SERVICES ENGINEERS.
- REFER TO THE ARCHITECTS DRAWINGS FOR DETAILS OF ALL BUILDING FIRE COMPARTMENTATION BARRIERS. ANY SERVICES PENETRATING THE FIRE COMPARTMENT SHALL BE FIRE SEALED USING THE APPROVED PENETRATION DETAIL.
- ALL PENETRATIONS THROUGH FIRE WALLS SHALL BE FIRE STOPPED TO MAINTAIN THE FIRE INTEGRITY OF THE FIRE WALL. ALL SLAB PENETRATIONS TO HAVE FIRE STOPPING TO MAINTAIN THE INTEGRITY OF THE FIRE RATED SLAB. THE CONTRACTOR SHALL MAKE GOOD ALL PENETRATIONS TO THE APPROVAL OF BUILDING CONTROL.
- THIS DRAWING SHALL NOT BE USED FOR INSTALLATION. THE MECHANICAL SERVICES CONTRACTOR SHALL BE RESPONSIBLE FOR PRODUCTION OF COORDINATED INSTALLATION DRAWINGS CHECKED WITH ACTUAL SITE DIMENSIONS.
- ALL DIMENSIONS WHERE INDICATED ARE IN MILLIMETRES UNLESS STATED OTHERWISE. ALL DIMENSIONS SHALL BE CHECKED ON SITE PRIOR TO COMMENCEMENT OF ANY WORKS.
- ALL PIPES TO BE WITHIN VOIDS UNLESS OTHERWISE STATED.
- ALL FINAL CONNECTIONS SHALL BE Ø15 UNLESS STATED OTHERWISE.
- COLD WATER TAPS ON THE RIGHT HAND SIDE, HOT WATER TAPS ON THE LEFT HAND SIDE.
- SOLENOID SHUTOFF VALVES SHALL BE INSTALLED ON THE WC SERVICES.
- CARTRIDGE VALVE TYPE FLOW RESTRICTIONS SHALL BE INSTALLED ON ALL OUTLETS AS FOLLOWS (AS MEASURED AT 3bar WATER PRESSURE):
SHOWERS - 8ltrs/min.
SINK - 5ltrs/min.
WHB - 3ltrs/min.

Legend:

- GAS SERVICES
- EXISTING COLD WATER SERVICES
- NEW MAINS COLD WATER SERVICES (MCWS)
- DOMESTIC HOT WATER SERVICES
- HIGH LEVEL CONCEALED PIPEWORK
- LOW LEVEL CONCEALED PIPEWORK
- PIPEWORK RISE/DROP
- WATER METER
- GAS METER
- 15mm MCWS CONNECTION
- 15mm MCWS AND HWS CONNECTION (WITH TMV)
- 15mm MCWS AND HWS CONNECTION (WITHOUT TMV)

Rev	Date	By	Chk	Aprvd	Description
-----	------	----	-----	-------	-------------

PROJECT
Midsomer Norton Town Hall

CLIENT

Bath & North East
Somerset Council



www.methodllp.com Bristol Tel: 0117 203 5160

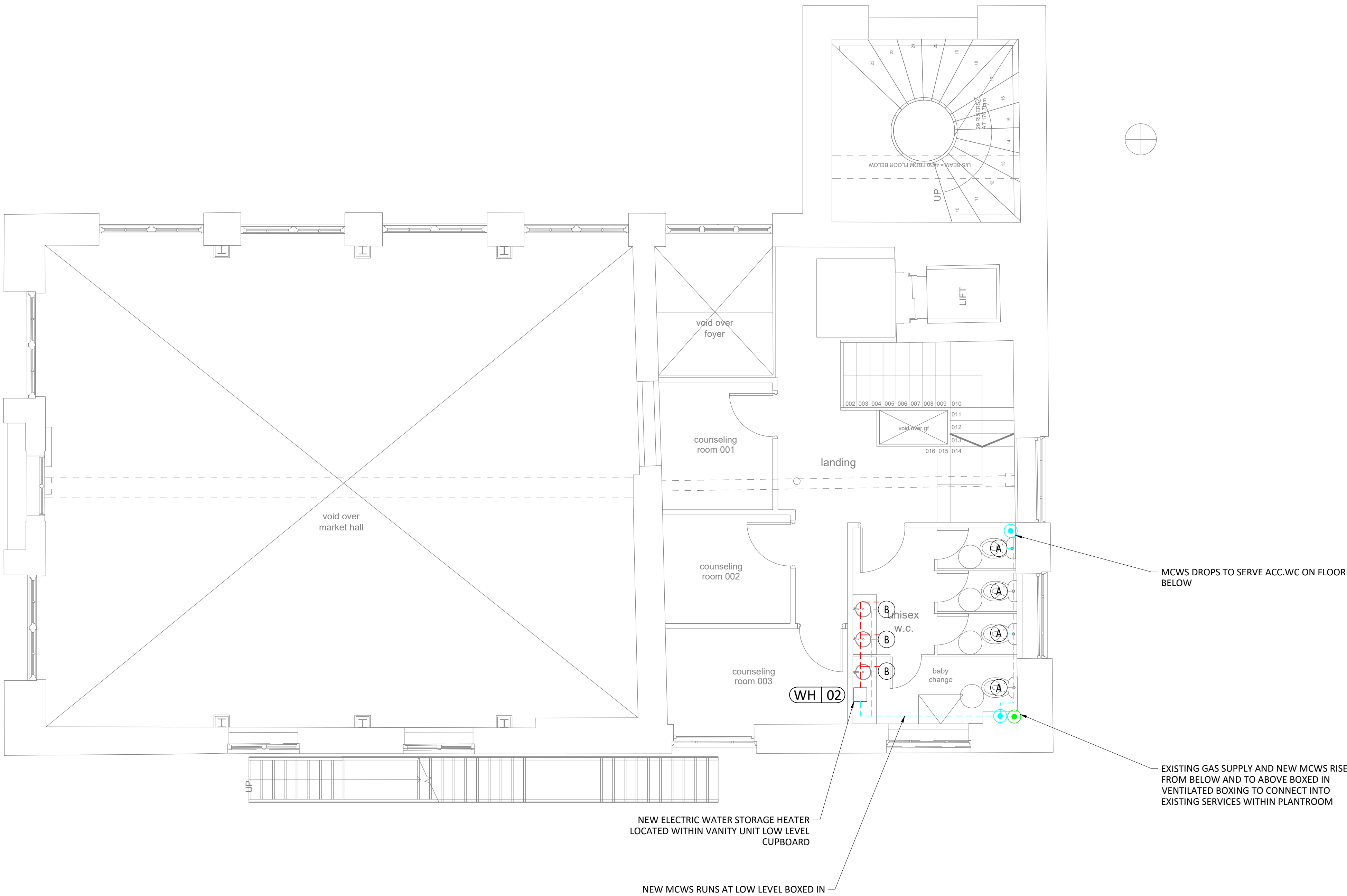
DRAWING TITLE
Combined Piped Services
First Floor

STATUS
S2 - FOR TENDER

DATE	SCALE	DRWN BY	CHK BY	APVD BY
21.10.21	1:50 - A1	ARG	DMS	DMS

DRAWING NUMBER	REVISION No.
1716PMN-MET-P1-01-DR-M-5302	S2 - T01

Scaling Note: Do NOT scale from this drawing.



SAFETY, HEALTH & ENVIRONMENTAL INFORMATION

FOR DETAILS OF SITE-WIDE AND GENERAL RISKS, TO BE READ IN CONJUNCTION WITH THESE NOTES, SEE THE CONTRACT DOCUMENTS AND, WHERE WORKS ARE NOTIFIABLE, THE PRE-CONSTRUCTION INFORMATION

IN ADDITION TO THE RISKS NORMALLY ASSOCIATED WITH THE TYPES OF WORK DETAILED ON THIS DRAWING, NOTE THE FOLLOWING RISKS AND INFORMATION:

CONSTRUCTION:
C1.Asbestos - Refer to DHRA for details
C2.Working at height to install services - Refer to DHRA for details
C3.

DISMANTLING/DEMOLITION (FUTURE):

D1.
D2.
D3.

IT IS ASSUMED THAT ALL WORKS WILL BE CARRIED OUT BY A COMPETENT CONTRACTOR WORKING, WHERE APPROPRIATE, TO AN APPROVED METHOD STATEMENT

THIS DRAWING IS NOT TO BE USED FOR CONSTRUCTION. INSTALLATION DRAWINGS SHOULD BE PRODUCED BY THE CONTRACTOR AND AGREED WITH THE CLIENT TEAM PRIOR TO ANY INSTALLATION WORK

THIS DRAWING SHALL BE PRINTED IN COLOUR