

Notes :

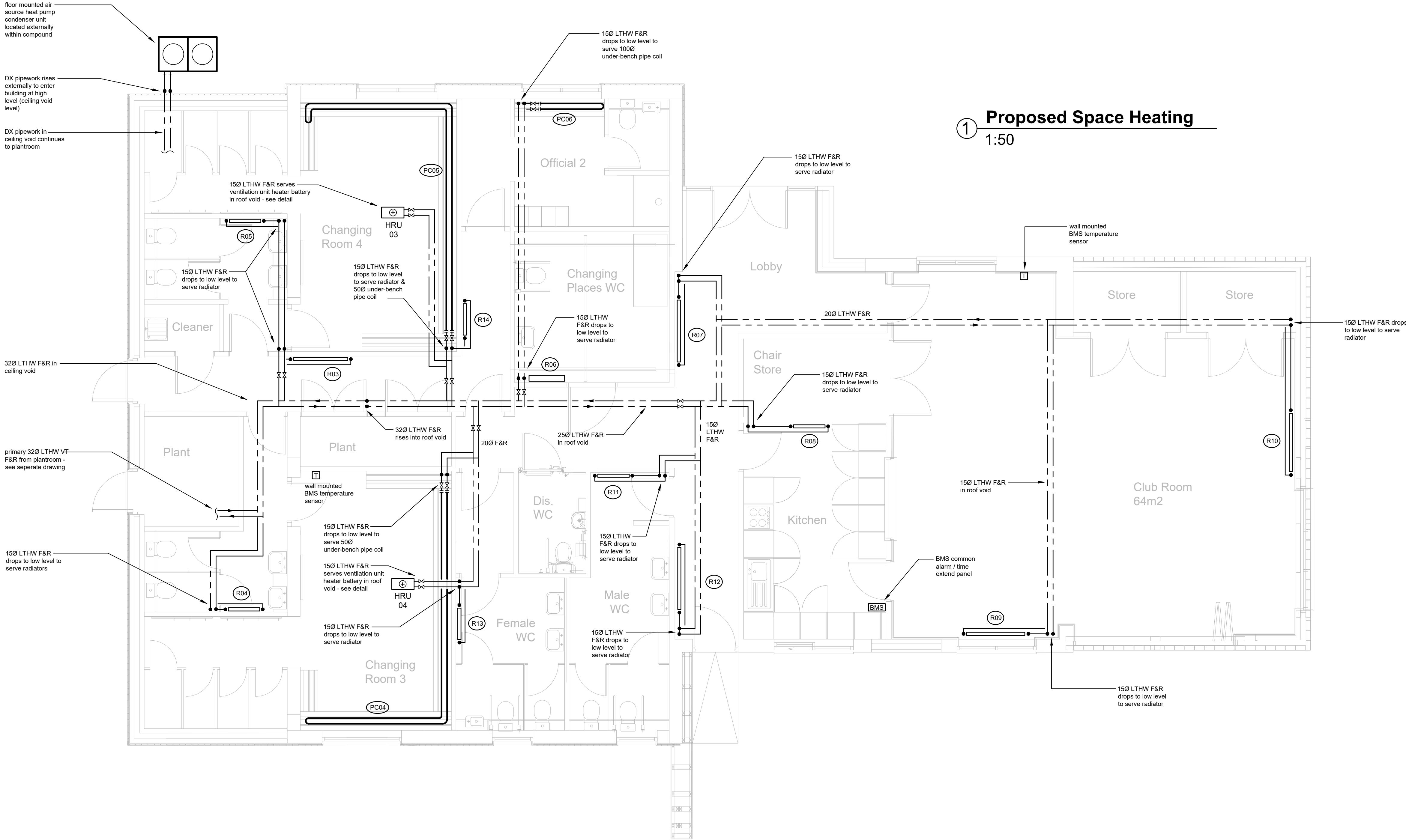
- 1) Install air vents at high points of system as necessary to allow for effective system venting, drain cocks to be installed at low points.
- 2) All pipework to be thermally insulated in accordance with specification, including pipework within ceiling voids, plant areas, boxings, exposed at high level.
- 3) Pipework to be run in heavy-grade steel - see spec.
- 4) Drawing to be read in conjunction with specification
- 5) Primary pipework to be distributed horizontally within roof void / flat roof ceiling void - see section on seperate drawing
- 6) All radiators / pipe-coil heat emitters to be provided with TRV's

Legend :

	PIPEWORK AT LOW LEVEL
	PIPEWORK WITHIN ROOF VOID
	LOW SURFACE TEMPERATURE RADIATOR
	STEEL PANEL RADIATOR
	PIPEWORK HEATING COIL
LTHW	LOW TEMPERATURE HOT WATER
HTG	HEATING
F&R	FLOW & RETURN
	WALL MOUNTED BMS TEMPERATURE SENSOR
	BMS HEATING USER EXTENSION TIMER

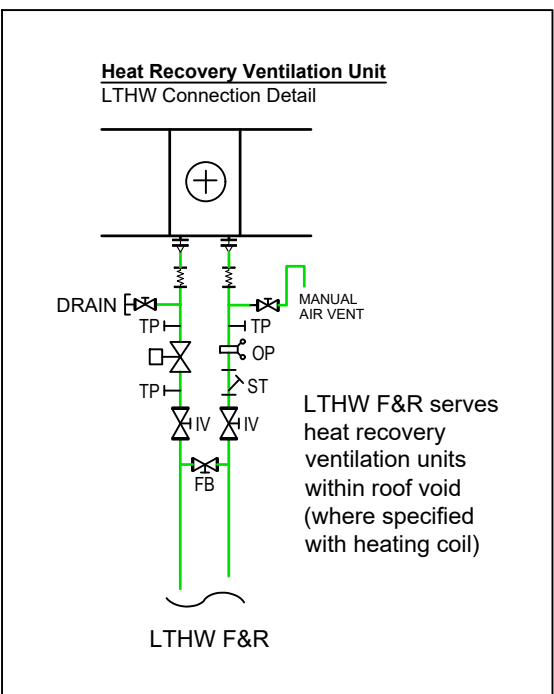
1 Proposed Space Heating

1:50



2 Schematic Detail

NTS



C	Revised Tender Issue - updated to suit latest building layouts	JUL '23	SJA	IRW
B	Tender Issue	JULY '22	SJA	IRW
A	Preliminary Issue	JUN. '22	SJA	IRW
rev.	description	date	drawn	approved

information ☐ approval ☐ tender ☒ contract ☐ construction ☐

Axis Mechanical & Electrical Consulting Engineers

No.8 Poplars Court
Lenton Lane
Nottingham
NG7 2RR
United Kingdom

tel: +44 (0) 115 9791875
fax: +44 (0) 115 9249179
email: mail@axisconsult.co.uk
web: www.axisconsult.co.uk



client

SAWTRY PARISH COUNCIL

project

GREEN FIELD SPORTS FIELD
SAWTRY, HUNTINGDON

drawing

PROPOSED LTHW SPACE HEATING
SERVICES

drawn	approved	date	scale
SJA	IRW	JUNE '22	1:50 @ A1

drawing ref.	revision
AX1937-M-003	C