

D01 Location Plan
Scale: 1:5000 @ A1

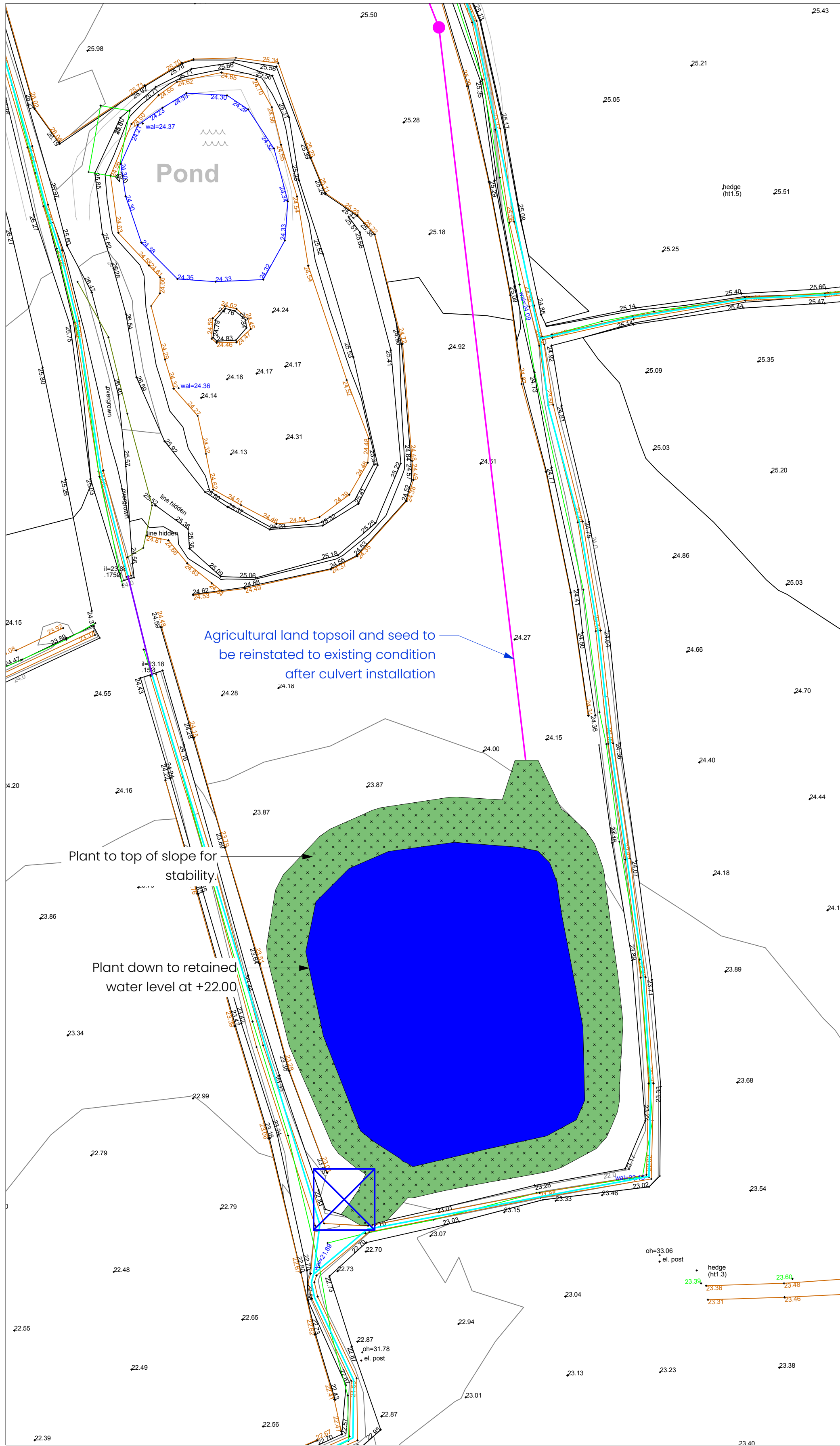
LANDSCAPE SPECIFICATION

N7 Wetland Meadow Mixture

Supplier
Naturescape
<https://www.naturescape.co.uk/product/n7-wetland-meadow-mixture/>
01949 860 592

Preparation
Cultivate subsoil / topsoil, apply a suitable herbicide and allow the correct time to elapse, as directed by the manufacturer, then seed the bed. No fertiliser, compost or mulch are to be applied.

Application
Wetland meadow mix to be sown directly into cultivated topsoil / subsoil in accordance with manufacturers recommendations at a rate of 5g/m2.



D02 Attenuation Pond Plan View
Scale: 1:500 @ A1

N7 WETLAND MEADOW MIXTURE

A mix of 22 native wildflower species (N7F) **and** 12 species of grass (N7G). 5 of the grass species are produced in the UK (indicated by an N following the species name).

Mix contains 80% Grasses to 20% Wildflowers by weight.

Sowing Rate: 5g per square metre, 20kg per acre, 50kg per hectare

N7 Grass Species		
Latin Name	Common Name	Mix Composition
Agrostis capillaris	Common Bent	2.50%
Alopecurus pratensis (N)	Meadow Foxtail	3%
Anthoxanthum odoratum (N)	Sweet Vernal Grass	3%
Briza media (N)	Quaking Grass	2%
Cynosurus cristatus	Crested Dogstail	17%
Deschampsia cespitosa (N)	Tufted Hairgrass	2%
Festuca Trachyphylla	Hard Fescue	17%
Festuca rubra ssp. commutata	Chewing's Fescue	16%
Festuca rubra ssp. litoralis	Slender Creeping Red Fescue	29%
Hordeum secalinum (N)	Meadow Barley	1%
Poa pratensis	Smooth Stalked Meadow Grass	8%
Trisetum flavescens	Yellow Oatgrass	2%
12 Grass species		100%

N7 Flower Species		
Latin Name	Common Name	Mix Composition
Achillea millefolium	Yarrow	2.50%
Centaurea nigra	Common Knapweed	9%
Filipendula ulmaria	Meadowsweet	8%
Lathyrus pratensis	Meadow Vetchling	3%
Leucanthemum vulgare	Oxeye Daisy	7%
Lotus corniculatus	Birdsfoot Trefoil	4%
Lotus pedunculatus	Greater Birdsfoot Trefoil	4%
Lychnis flos-cuculi	Ragged Robin	2%
Ononis repens	Common Restharrow	2%
Plantago lanceolata	Ribwort Plantain	4%
Primula veris	Cowslip	3%
Prunella vulgaris	Self Heal	8%
Ranunculus acris	Meadow Buttercup	9%
Rhinanthus minor	Yellow Rattle	10%
Rumex acetosa	Common Sorrel	8%
Sanguisorba officinalis	Great Burnet	2%
Serratula tinctoria	Sawwort	1%
Stachys officinalis	Betony	2.50%
Succisa pratensis	Devilsbit Scabious	3.50%
Tragopogon pratensis	Goatsbeard	2%
Trifolium pratense	Wild Red Clover	3%
Vicia cracca	Tufted Vetch	3%
22 Wildflower species		100%

MANAGEMENT & MAINTENANCE PLAN

(For full plan refer to 313-LYR-XX-ZZ-SCH-L-0001)

Group No.	Prescription	Year	Season	Frequency
1	Wetland Meadow Seed Mix			
Year 1				
	Sow seed in Autumn to achieve best results.	1	Autumn	As stated
	Cut growth back in Spring (leave any cuttings on the ground for 2 days to allow seeds to drop).	1	Spring	As stated
	Cut growth back 1 year after sown (leave any cuttings on the ground for 2 days to allow seeds to drop).	1	Autumn	As stated
Year 2-9				
	Cut growth back in Autumn (leave any cuttings on the ground for 2 days to allow seeds to drop).	2 through 9	Autumn	1
	Re-seed any areas that are underperforming - where seed mix continually fails to establish, undertake investigations to ascertain any underlying cause.	2 through 9	Autumn	As required
Year 10				
	Re-seed entire areas as indicated on drawings 313-LYR-XX-ZZ-DWG-L-3000 & 313-LYR-XX-ZZ-DWG-L-3001.	10	Autumn	10

NOTES:

- DO NOT SCALE FROM THIS DRAWING. ALWAYS WORK TO NOTED DIMENSIONS.
- ALL SETTING OUT, LEVELS AND DIMENSIONS TO BE CHECKED ON SITE PRIOR TO THE INSTALLATION OF MATERIALS AND ANY DISCREPANCIES ARE TO BE BROUGHT TO THE ATTENTION OF THE CONTRACT ADMINISTRATOR IMMEDIATELY.
- THIS DRAWING MUST BE READ WITH THE RELEVANT SPECIFICATION DOCUMENTS AND DETAIL DRAWINGS. ANY DISCREPANCIES MUST BE BROUGHT TO THE ATTENTION OF THE CONTRACT ADMINISTRATOR IMMEDIATELY.
- THIS DRAWING IS COPYRIGHT PROTECTED AND MAY NOT BE REPRODUCED IN WHOLE OR PART WITHOUT WRITTEN AUTHORITY.
- ALL DIMENSIONS ARE IN MILLIMETRES UNLESS OTHERWISE STATED.

THIS DRAWING WAS PLOTTED ON:
07/11/2024

DATE	REV	ZONE	DESCRIPTION	CHK
25/07/22	1		Water levels & planting amended	MDM
07/11/2024	2		Updated Attenuation Pond and Culvert	EP

KEY

GENERAL INFORMATION

PROPOSED ADDITIONAL CATCHMENT AREA

EXISTING CATCHMENT AREA

HOLIDAY VILLAGE CATCHMENT AREA

OMITTED CATCHMENT AREA

EXISTING DITCH TO BE RETAINED

PROPOSED CULVERT

EXISTING CULVERT TO BE RETAINED

PROPOSED ATTENUATION POND

EXISTING POND

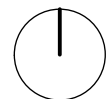
PROPOSED FLOW CONTROL

SOFTWARES

N7 WETLAND MEADOW MIXTURE
Supplier: Naturescape

PROPOSED CULVERT - Agricultural land topsoil and seed to be reinstated to existing condition after installation

LOCATION PLAN



ORIGINATOR

	W	layer.studio	MANCHESTER	NEWCASTLE
	T	01625 523 157	The Barn	Firfield
E	manchester or newcastle@layer.studio	One Hollin Lane	1 Salters Road	
		Styck	Gosforth	
		SK9 4JH	Newcastle upon Tyne	
			NE3 1DH	

Client

Ribble River Trust

Project

Wrea Green

Lancashire

Drawing Title

Detailed Planting Plan - Attenuation Pond

Created By	Checked By	Scale	Sheet Size
MDM	MW	As shown	A1

Project Number	Originator	Volume	Level	File Type	Discipline	Number
313	LYR	XX-ZZ-DWG-L-3000				

Work Stage	Status	Revision
Stage 3		2