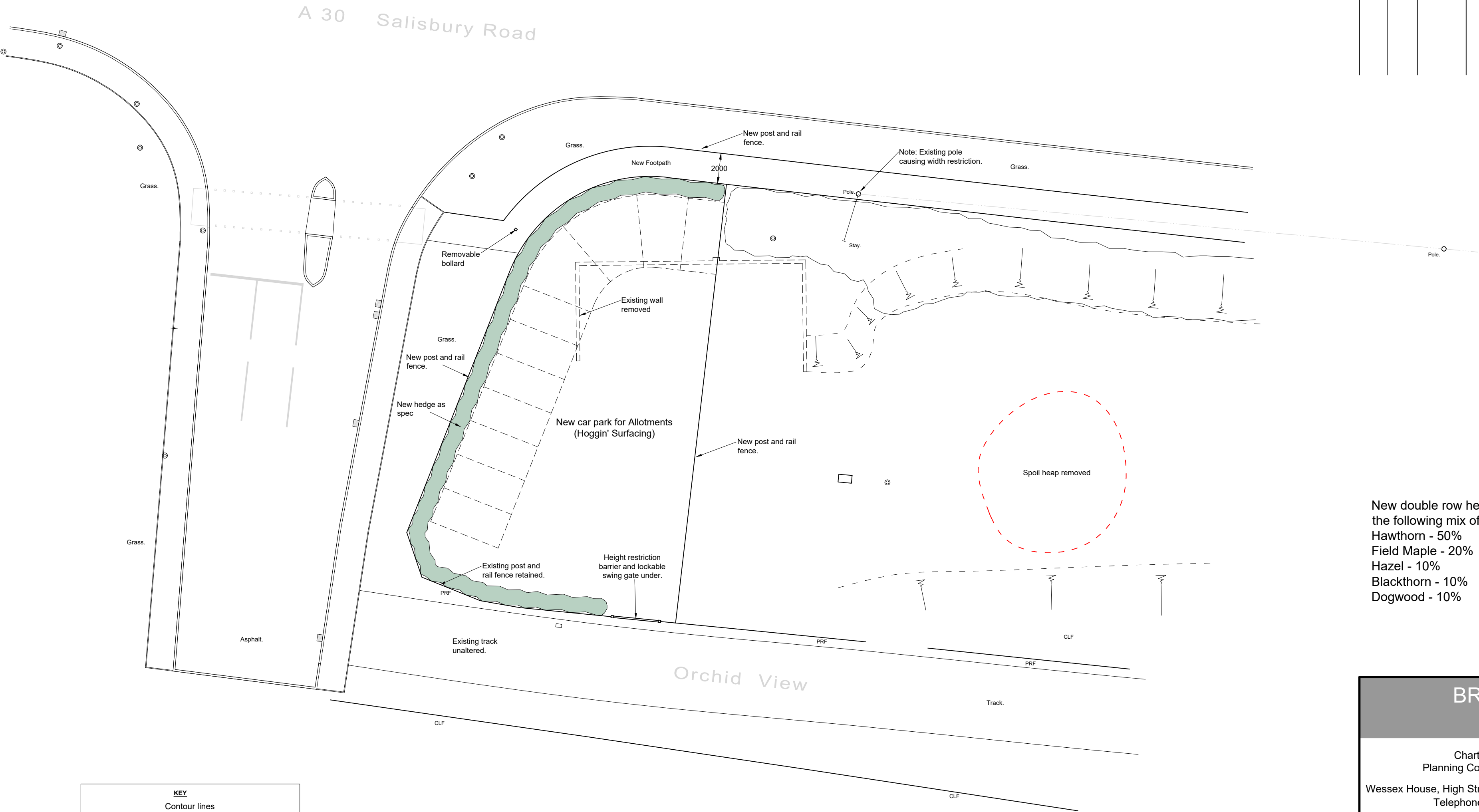


Rev	Drn	Date	Description
B	DWR	24.10.19	Revised Site Layout



New double row hedge planting containing the following mix of species:
Hawthorn - 50%
Field Maple - 20%
Hazel - 10%
Blackthorn - 10%
Dogwood - 10%

KEY

----- Contour lines

Roof overhang

Assumed line of FW drainage

FW drainage run

OHW BT - 13.888

Overhead wires BT

OHW Elec - 13.304

Overhead wires Electricity

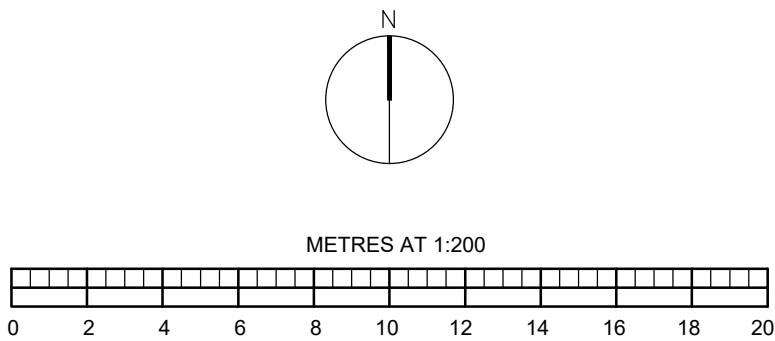
Tree (bole and approximate canopy)

Tree off site - indicative canopy.

Cov - 10.094

Inv - 9.420

Inspection Chamber cover and invert level.



BRIMBLE LEA

Chartered Architects
Planning Consultants & Surveyors

Wessex House, High Street, Gillingham, Dorset SP8 4AG
Telephone (01747) 823232

PROJECT Land off Orchard View,
Salisbury Road,
Shaftesbury,
Dorset,
SP7 8QB.

DRAWING Proposed Site Plan

SCALE 1:200 @ A2

DRAWING ORIGINATOR DWR	DRAWING No. 19067 - 2	REVISION C
DATE 22.07.2019		