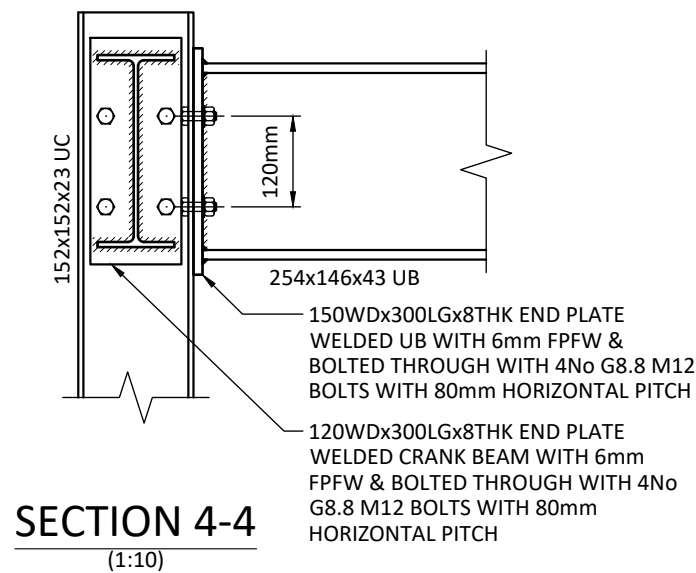
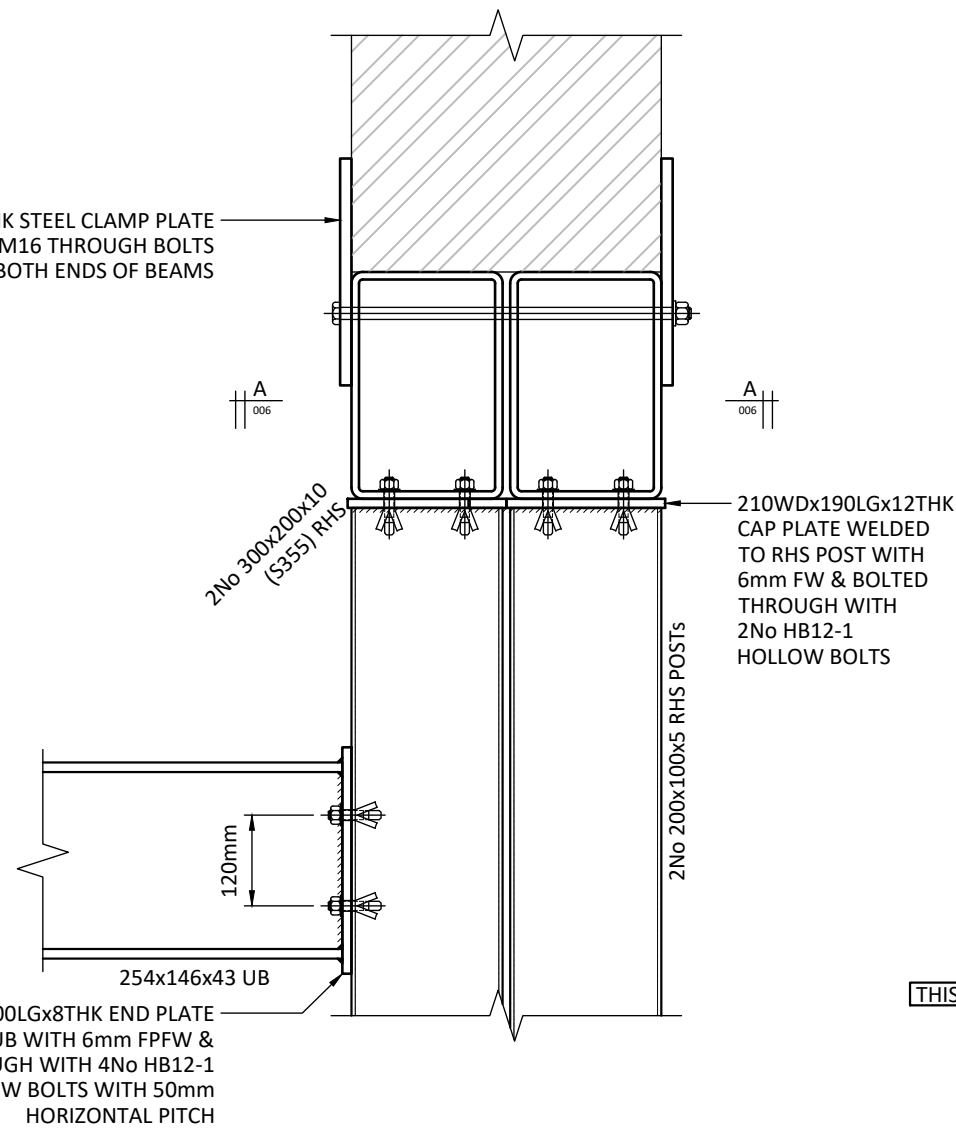


300WDx250LGx15THK STEEL CLAMP PLATE
WITH 3No G8.8 M16 THROUGH BOLTS
PROVIDE BOTH ENDS OF BEAMS



FOR CONSTRUCTION

THIS ISSUE	A	CONSTRUCTION	31.07.19	CONSTRUCTION ISSUE	OJF/CCW
	-	COMMENT	28.06.19	FIRST ISSUE	OJF/CCW
	Revision	Reason for Issue	Issue Date	Revision Notes	DRW/CHK
Title: SECTIONS & DETAILS 3				Project N.o: 18234 Drawing N.o: 006 Drawn: OJF Scale @ A3: AS SHOWN <small>DIMENSIONS IN mm DO NOT SCALE</small>	
Project: LEIGH-ON-SEA COMMUNITY CENTRE 71-73 ELM ROAD SS9 1SP				Client: LEIGH-ON-SEA TOWN COUNCIL	
<div><div><div>CRUCIS DESIGNS LIMITED consulting civil & structural engineers Suite 1, Business Centre, 8 Madeira Avenue, Leigh-on-Sea, Essex, SS9 3EB email:info@crucisdesigns.com tel:01702 416 114</div></div><div><div>CRUCIS DESIGNS consulting civil and structural engineers</div></div></div>					

CRUCIS
DESIGNS
consulting civil and
structural engineers