

This drawing is copyright and may not be altered, traced, copied, photographed or used for any purpose other than that for which it is issued without written permission from Meiloci Landscape Architects.

Do not scale for construction purposes. Figured dimensions shall have precedence over scaled dimensions.

Any discrepancies should be reported to the Landscape Architect.

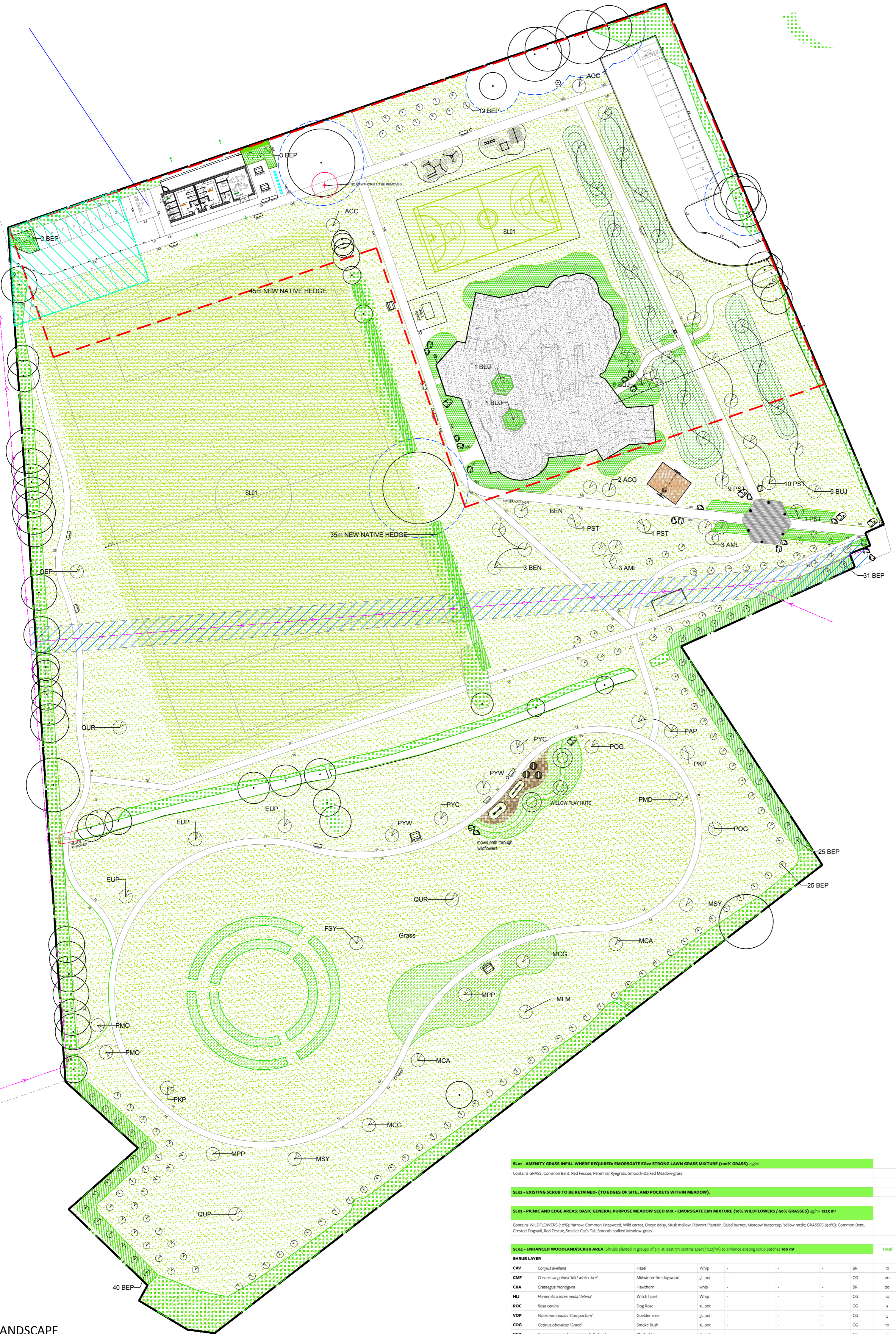
All trees and hedges are to be protected in accordance with BS5837 and/or Arboricultural recommendations unless instructed otherwise.

NOTES / REVISIONS

REV	DESCRIPTION	INT. PLAN	DATE
01	TENDER ISSUE		28.03.24

SOFT LANDSCAPE KEY:

- PROPOSED TREES: REFER TO PLANT SCHEDULE FOR SPECIES AND SPEC.
- EXISTING TREES ON SITE
- EXISTING TREE TO BE REMOVED
- TREE ROOT PROTECTION ZONE: AREAS WHERE NO DIG TREE ROOT PROTECTION REQUIRED UNDER EXISTING TREE CANOPY
- AREA OF HEDGEROW TO BE REMOVED: APPROXIMATELY 0.5M TO TRIMBLE NEW LOOP PATH TO NATURE WOODLAND AREA
- EXISTING AMENITY GRASS: STRONG LAW GRASS MIX WHERE REQUIRED. ENHANCED GRASS MIX AS APPROVED. ALLOW TO ESTABLISH AS RECOMMENDED SPECIFICATION. (Spec: 02.010)
- SOFT LANDSCAPE 01 - AMENITY GRASS: MAKE GOOD: STRONG LAW GRASS MIX WHERE REQUIRED. ENHANCED GRASS MIX AS APPROVED. ALLOW TO ESTABLISH AS RECOMMENDED SPECIFICATION. (Spec: 02.010)
- SOFT LANDSCAPE 02 - EXISTING SCRUB AND BUFFER EDGE: EXISTING, PREDOMINATELY NATIVE TREE PLANTING, SCRUB AND SHRUBS TO BE RETAINED.
- GENERAL PURPOSE WILDFLOWER/GRASS MIX: ENHANCED 80% GRASS MIX (Spec: 02.010)
- SOFT LANDSCAPE 04 - ENHANCED WOODLAND UNDERSTORY: NATIVE SHRUBS TO CREATE NEW WOODROW TO SITE BOUNDARY. WITH WILDFLOWER UNDERSTORY.
- SOFT LANDSCAPE 05 - ORNAMENTAL PLANTING TO BOUNDARY GARDEN AND GREAT PARK EDGE: MIXED SPECIES PERENNIALS WITH EVERGREEN SHRUBS.
- FEATURE GRANITE BOULDERS: Ref: Specification Clause 02.100
- TRAIL LINE RELAY FEATURE TO TERRACE: PAVED WITH SLEEPS. BLACK IRON FURNITURE. Ref: Detail 301.4. Specification Clause 02.100



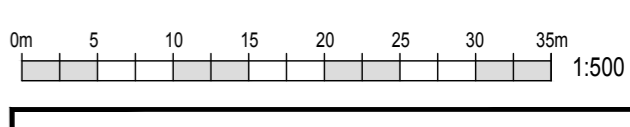
- SL01 - AMENITY GRASS INFILL: WHERE REQUIRED. ENHANCED GRASS MIX STRONG LAW GRASS MIXTURE (50% GRASS)** (02.010) 1000m²
Contains: GRASS: Common Bent, Red Fescue, Perennial Ryegrass, Smooth-stalked Meadow Grass
- SL02 - EXISTING SCRUB TO BE RETAINED: (TO EDGES OF SITE, AND POCKETS WITHIN MEADOW)**
- SL03 - PICNIC AND EDGE AREAS: BASIC GENERAL PURPOSE MEADOW SEED MIX - EMORGASATE 80% GRASS MIXTURE (40% WILDFLOWERS / 60% GRASSES)** (02.010) 1025m²
Contains: WILDFLOWERS (50%): Yarrow, Common Knapsack, Wild carrot, Oxeye Daisy, Musk mallow, Ribwort's Plantain, Salad burnet, Meadow buttercup, Yellow rattle; GRASSES (50%): Common Bent, Crested Dogtail, Red Fescue, Small's Cat's Tail, Smooth-stalked Meadow Grass
- SL04 - ENHANCED WOODLAND/SCRUB AREA: (Shrubs planted in groups of 3, at least 3m centres apart / 200m²) to enhance existing scrub patches 100m²** Total 30

SHRUB CODE	Species	Height	Form	Quantity	Spec
CAV	Corylus avellana	Hazel	Whip	10	BR
CMF	Cornus sanguinea 'Mid winter fire'	Midwinter fire dogwood	SL, POT	20	CG
CRA	Crataegus monogyna	Hawthorn	Whip	20	BR
H2	Hamelis inermis media 'Jelena'	Witch Hazel	Whip	20	CG
RCC	Rosa carolina	Dog Rose	SL, POT	10	CG
VID	Vitex vitifolia 'Compacta'	Gardenia rose	SL, POT	5	CG
COG	Cotinus obovata 'Gracil'	Smoke Bush	SL, POT	10	CG
SMP	Sambucus nigra 'porphyrophylla' 'iva'	Black elder	SL, POT	10	CG
- SL05 - WILDFLOWER AREA: EMORGASATE 80% SPECIAL GENERAL PURPOSE MEADOW MIX (20% WILDFLOWERS / 80% GRASSES)** (02.010) with overview of *Concordia & Cam Mangold 300*
Contains: WILDFLOWERS (20%): Betty's, Greater Knapweed, Campy Daisy, Small Meadow Sweet, Yellow Star, Ragwort, Chival, Lady's Bedstraw, Shik Foor Trefail, Cowslip, Meadow Buttercup, Common Knapsack, Yarrow, Hedge Bedstraw, Salad Burnet, Red Campion, Ragged Robin, Meadow Vetching, Viper's Bugloss, Kidney Vetch, Hoary Plantain, Agrimony, Hedgehog Cress, Meadowweet, Wild Carrot, Field Scabious, Crosswords, GRASSES (80%): Common Bent, Crested Dogtail, Red Fescue, Smooth-stalked Meadow Grass
- SL06 - TUZOCK MEADOW SEED MIX - EMORGASATE 80% MIXTURE (20% WILDFLOWERS / 80% GRASSES)** (02.010) 200m²
Contains: WILDFLOWERS (20%): Yarrow, Agrimony, Lesser Bird's-foot, Common Knapsack, Greater Knapweed, Rough Chervil, Hoody Thistle, Wild Carrot, Wild Tansy, Meadowweet, Hedge Bedstraw, Field Scabious, Meadow Vetching, Bird-foot Trefoil, Musk mallow, Salad Burnet, Ribwort's Plantain, Yellow Rattle, Red Campion, Tufted Vetch, GRASSES (80%): Crested Dogtail, Tufted Hair Grass (4), Tall Fescue (2), Cockfoot, Red Fescue, Meadow Fescue
- SL07 - WOODLAND BULB/PLANTING:** (to be planted in groups of 3, at least 3m centres apart / 200m²) to enhance existing scrub patches 100m² Total 30

BLB CODE	Species	Quantity	Spec
ANE	Anemone nemorosa	Wood anemone	Bulb/plug
ANC	Aquilegia chrysantha 'Yellow Queen'	Granny's bonnet	Bulb
ACH	Fritillaria meleagris	Snakehead fritillary	Bulb
HMS	Hyacinthoides non-scripta	English Bluebell	Bulb
PEL	Primula elatior	Oldsp	Bulb/plug
NEL	Narcissus W. P. Miller	Daffodil - Cornish variety	Bulb

01 SOFT LANDSCAPE Scale 1:500

Plant code	Botanical name	Common name	Height	Girth	Form	Clear stem / density	Root Condition	% mix	Plant numbers	Mature height	Mature spread	Form	Comment
TREE SPECIMENS													
ACC	Acer campestre	Field maple	3-4m	8-10cm	Standard	1.2m	BR	5%	2	14m	6m	OVAL	AUTUMN
ACG	Acer glabrum	Rigebark maple	3-4m	3-10m- no true trunk	MS	-	BR	5%	2	10m	6m	ROUND	BANK
AML	Amelanchier arborea 'Robin Hill'	June Berry/Snowy Meadplum	3-4m	3-10m- no true trunk	MS	-	BR	6%	2	10m	6m	MS	BLOSSOM
BEN	Betula nigra	River birch	3-4m	3-10m- no true trunk	MS	-	BR	4%	2	12m	6m	ROUND	PEELY BA
BUJ	Betula utilis 'Sargemontii'	Himalayan Birch	3-4m	3-10m- no true trunk	MS	-	BR	13%	2	12m	6m	MS	WHITE BA
EUP	Euroglypta pauciflora	Snow Gum	3-4m	8-10cm	Standard	-	CG	BR	13	10m	6m	ROUND	SILVER FC
FSY	Fagus sylvatica 'atropurpurea'	Copper Birch	10-12m	10-14cm	Heavy Standard	-	CG	BR	1	10m	10m	OVAL	WHITE BI
PSE	Prunus serotina 'Eldorado'	Tobacco cherry	3-4m	3-10m- no true trunk	MS	-	BR	3%	3	10m	6m	MS	SHINY BA
PST	Prunus serotina 'Shiloh'	Great white cherry	3-4m	8-10cm	Standard	1.2m	BR	3%	3	7m	6m	ROUND	ORANGE
QUR	Quercus petraea	Sessile Oak	3-4m	12-14cm	Heavy Standard	-	BR	2%	2	10m	10m	ROUND	NATIVE
QUK	Quercus robur	Pedunculate oak	3-4m	12-14cm	Heavy Standard	-	BR	2%	2	10m	10m	ROUND	NATIVE
ORCHARD SPECIES													
MVY	Malus sylvestris	Crab Apple	2.5-3m	8-10cm	Standard	1m	BR	2%	2	10m	6m	ROUND	FRUIT
MCA	Malus sp. Cornish Aromatic (East)	Cornish Aromatic Apple	2.5-3m	8-10cm	Standard	1m	BR	2%	2	10m	6m	ROUND	FRUIT
MCP	Malus sp. Cornish Glow (East)	Cornish Glow Apple	2.5-3m	8-10cm	Standard	1m	BR	2%	2	10m	6m	ROUND	FRUIT
MCC	Malus sp. Pascoe's Pipin	Pascoe's Pipin Apple	2.5-3m	8-10cm	Standard	1m	BR	2%	2	10m	6m	ROUND	FRUIT
PKP	Prunus avium Plena	Wild cherry	2.5-3m	8-10cm	Standard	1m	BR	2%	2	12m	6m	ROUND	FRUIT
PAP	Prunus 'Yea Plum'	'Yea Plum'	2.5-3m	8-10cm	Standard	1m	BR	2%	2	6m	6m	OVAL	FRUIT
PMD	Prunus 'Morello'	Morello Cherry	2.5-3m	8-10cm	Standard	1m	BR	2%	2	6m	6m	OVAL	FRUIT
PGR	Prunus 'Old Greengage'	'Old Greengage'	2.5-3m	8-10cm	Standard	1m	BR	2%	2	6m	6m	OVAL	FRUIT
PNB	Prunus 'Maryweath Damson'	'Maryweath Damson'	2.5-3m	8-10cm	Standard	1m	BR	2%	2	6m	6m	OVAL	FRUIT
PCF	Prunus 'Dorset's Golden' AGM	'Corona Pear'	2.5-3m	8-10cm	Standard	1m	BR	2%	2	6m	6m	OVAL	FRUIT
PWV	Prunus communis 'Williams Bon Christe'	Williams Bon Christe Pear	2.5-3m	8-10cm	Standard	1m	BR	2%	2	6m	6m	OVAL	FRUIT
PFC	Prunus communis Conference	Conference Pear	2.5-3m	8-10cm	Standard	1m	BR	2%	2	6m	6m	OVAL	FRUIT
HEDGE TO SOUTHERN FIELD BOUNDARY													
BEP	Betula pendula	Silver Birch	1m	60-80cm	Sapling	-	BR	40%	15	10m	6m	UPRIGHT	WHITE BI
TOTAL													



MEI LOCI
 Studio G2, Old Bakery Studios, Blewetts Wharf, Truro,
 Cornwall, TR1 2PN
 studio@meiloci.co.uk | 01872 264 899

CLIENT
CAMBORNE TOWN COUNCIL

JOB DESCRIPTION/LOCATION
 Park Gerry
 Camborne
 Cornwall, TR14 8QB

DRAWING TITLE
PLANTING PLAN

TENDER

Date 23.09.23	Scale 1:500	Drawn By FZ	Checked PH
Job No. M550	Drawing No. DR-L-1004	Revision 01	