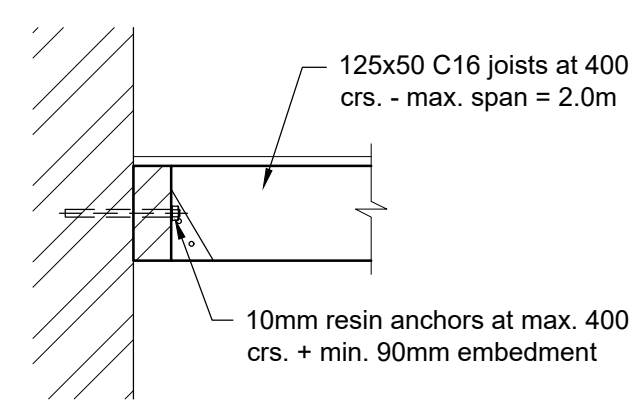
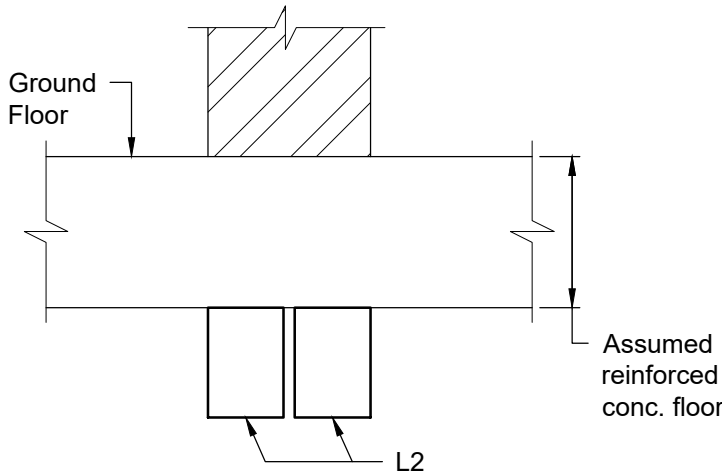


Construction Notes:

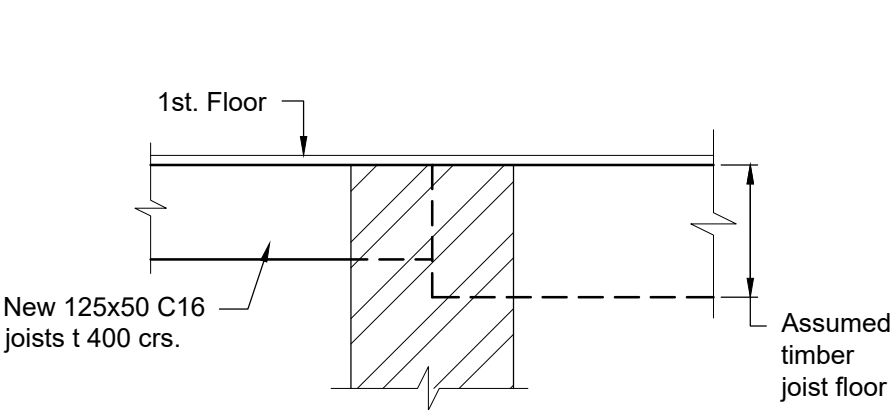
For all Construction Notes please refer to Rhodes and Partners drawing D26536-102.



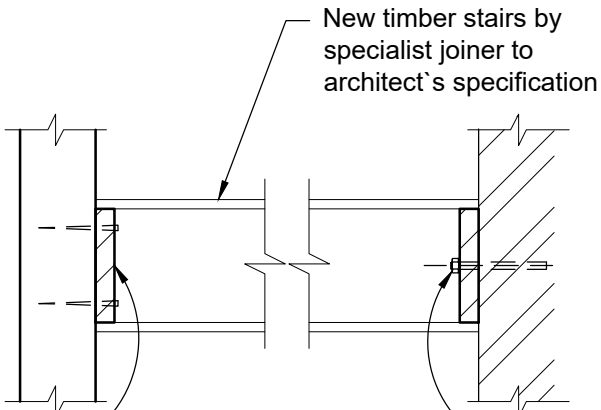
Section 3-3
(Typical New Suspended Floor)
[Scale 1:10]



Section 4-4
[Scale 1:10]

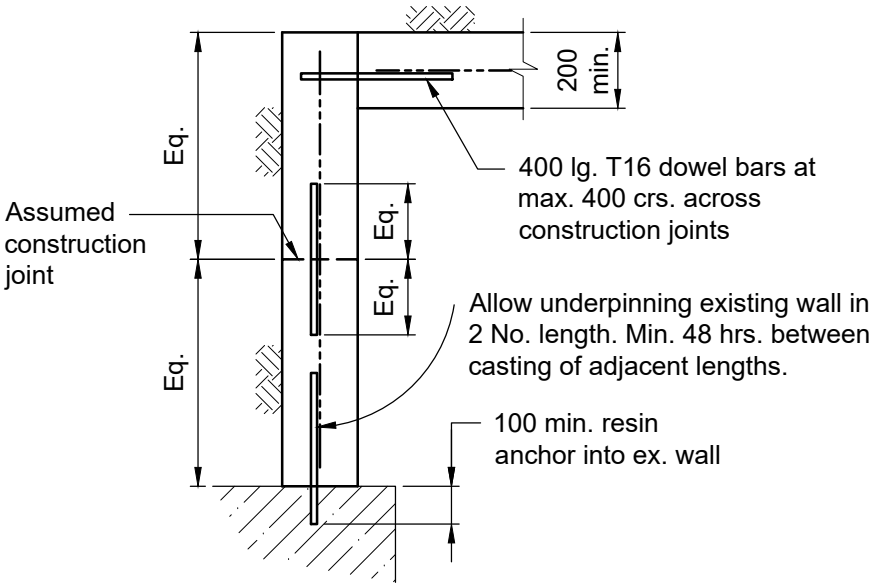


Section 5-5
[Scale 1:10]



Section 6-6
[Scale 1:10]

Stair stringer fixed to wall by min. 10mm resin anchors at max. 400 crs. + min. 90mm embedment



Section 7-7
[Scale 1:20]



A	Detail 7-7 added.	DB	PRG	13/11/2023
Rev	Description	By	Chkd	Date

Drawing Status:

-

Rhodes
&partners

Consulting Civil and Structural Engineers
Suite 4, Marple House, 39 Stockport Road, Marple, Stockport SK6 6BD
t:0161 427 8388 e:office@rhodesandpartners.co.uk

Client:

High Peak Architects Ltd

Project:

The Mechanics Institute, Whaley Bridge
SK23 7AA

Drawing Title:

Lift Installation Structural Details
- Sheet 5

Drawn By: DB	Checked By: PRG	Date: 01/06/2023	Scale: As shown on A3
-----------------	--------------------	---------------------	--------------------------

Drawing No:
D26536-105

Revision:
A