

Design Statement (planning application)

Sports Equipment Storage Building, Woodside, Lymington, SO41 8FP

Single-storey storage building serving Woodside Sports Pavilion

Introduction

This brief design statement provides details, in addition to the floor plans and elevations, demonstrating the design principles and contextual suitability of the proposed scheme.

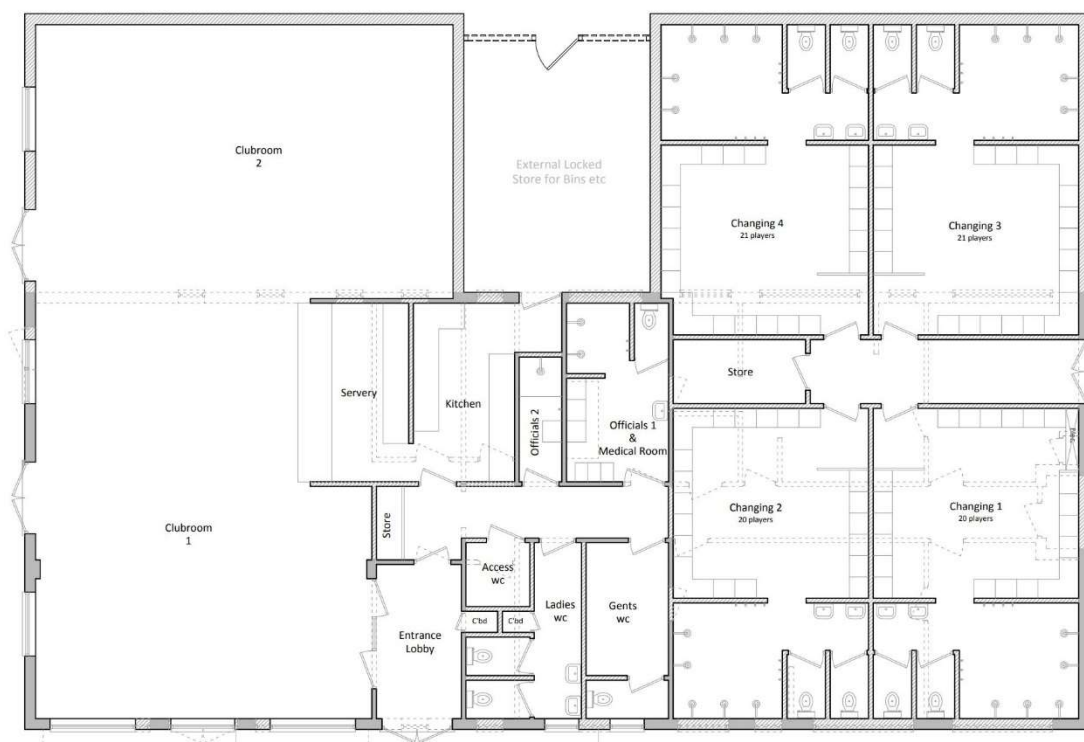
Existing Facilities

This popular pavilion supports a variety of thriving local outdoor sports clubs providing their clubhouse facilities including seating areas, changing and shower rooms, toilets and kitchen facilities.

There is limited secure storage for club equipment. Equipment stored outside is subject to deterioration caused by exposure to the elements and potential vandalism.

The pavilion is located on the eastern boundary of the playing field, a considerable distance from the nearest resident.

Fig 1: Existing Sports Pavilion



Lymington Sports Association operate the pavilion and report a membership of over 700 individuals as well as supporting local clubs such as:

- Lymington Croquet Club
- Lymington Cricket Club
- Lymington Mariners RFC
- Lymington Netball Club
- Lymington Sprites FC
- New Forest Hockey
- New Forest Soccer
- New Forest Volleyball

Site & Setting

Woodside Park is a Public Open Space, within the Greenbelt, extending to approximately 30 acres and containing outdoor playing fields for a variety of sports as well as formal gardens and informal outdoor recreation space for the enjoyment of the local community.

The location for the proposed store, to the rear of the existing pavilion, does not have a designated recreational use.

Fig 2: North West elevation of the existing pavilion, playing fields to the right (not shown), Croquet pitch in foreground



Fig 3: Proposed store location to the rear (North East) of the existing pavilion



Fig 4: North West (front) elevation of the existing pavilion showing proposed store location to the rear



Design Priorities

- Provide secure, dry storage for Rugby equipment (floodlights on 4 meter trailer);
- Provide additional secure, dry storage for outdoor sports equipment; and
- Maintain adequate provision for the ongoing support of community recreation facilities.

Design Principles

Reference has been made to the existing sports pavilion to guide the design of this ancillary structure, however the store is kept at a distance and to the rear of the pavilion to reduce massing and overall visibility.

The proposed building, roof form and materials will reflect the pavilion to present a co-ordinated aesthetic to the park's facilities.

Fig 5: Proposed cladding over brick plinth



Fig. 6: Proposed eaves detail (as existing pavilion)



Conclusion

The store has been thoughtfully designed to meet the practical requirements of local sports clubs whilst remaining a modest building imposing minimal impact on the visual and recreational amenity of the park itself.

The store will support the ongoing success of this popular community facility by providing secure, dry storage for existing and future sports equipment requirements.