

TENDER

WEST INDIAN SOLDIER EXHIBITION / 2021

CONSTRUCTION LIST

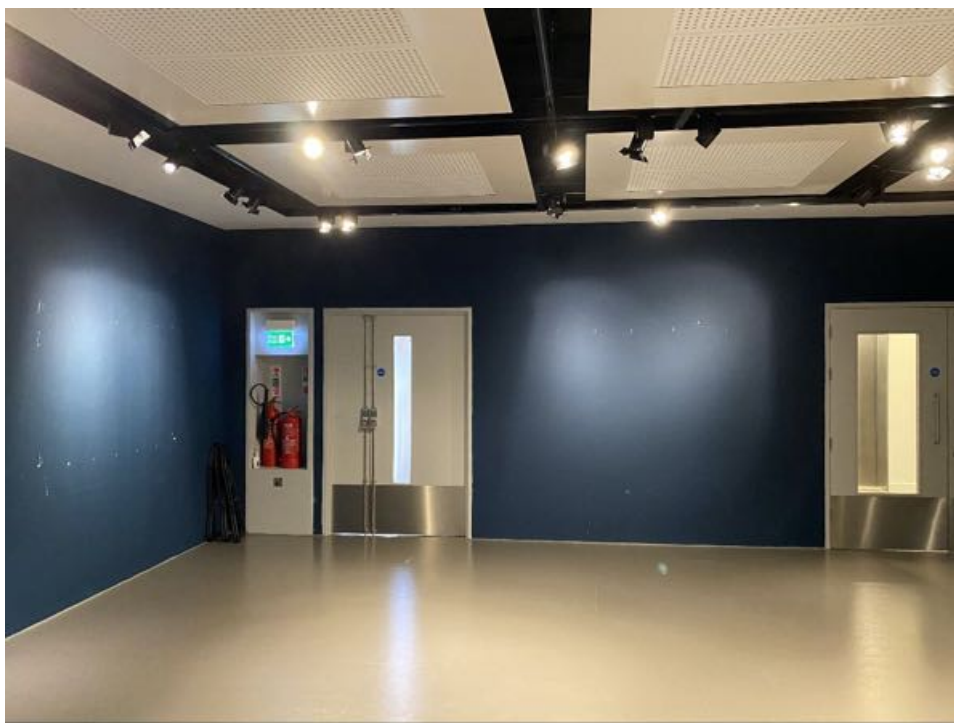
CONTRACTOR				
ITEM	CODE ON PLAN	DESCRIPTION	UNIT	NOTE
Set work	SETWORK	Build of Central structure including Perspex display case	1 set	
Perspexcase	PC 1	Wall mounted perspex case	1 ea	on west wall
	PC 2	Wall mounted perspex case	1 ea	on west wall
	PC 2	Wall mounted perspex case	1 ea	on north wall
	PC 3	Wall mounted perspex case	1 ea	on north wall
Cladding	CL 1	Cladding of MDF around existing case	1 ea	
Remove existing arched wall structures		Remove existing arched wall structures		These are just screwed back to the wall
Painting gallery		Painting of the external gallery walls		Filling of holes in the wall and
Painting existing display case		Painting of the existing display cases	8 ea	Colour TBC
Cut aperture in existing AV unit		Cut larger aperture in existing AV unit to fit screen	1 ea	Size TBC

LOCATION

FOCUS GALLERY AT THE NATIONAL ARMY MUSEUM



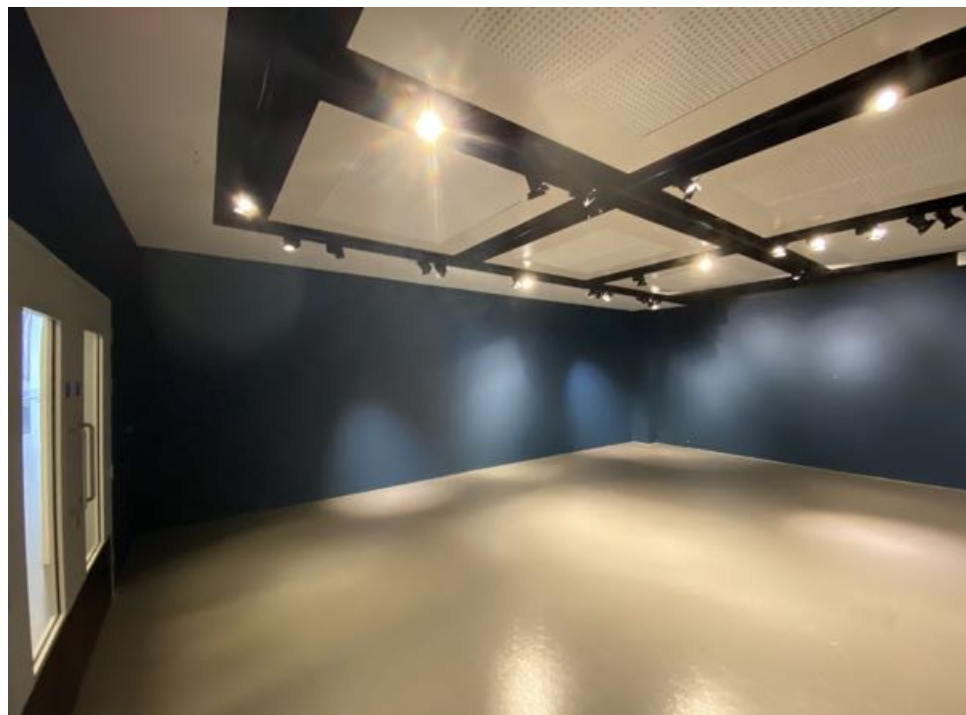
South wall



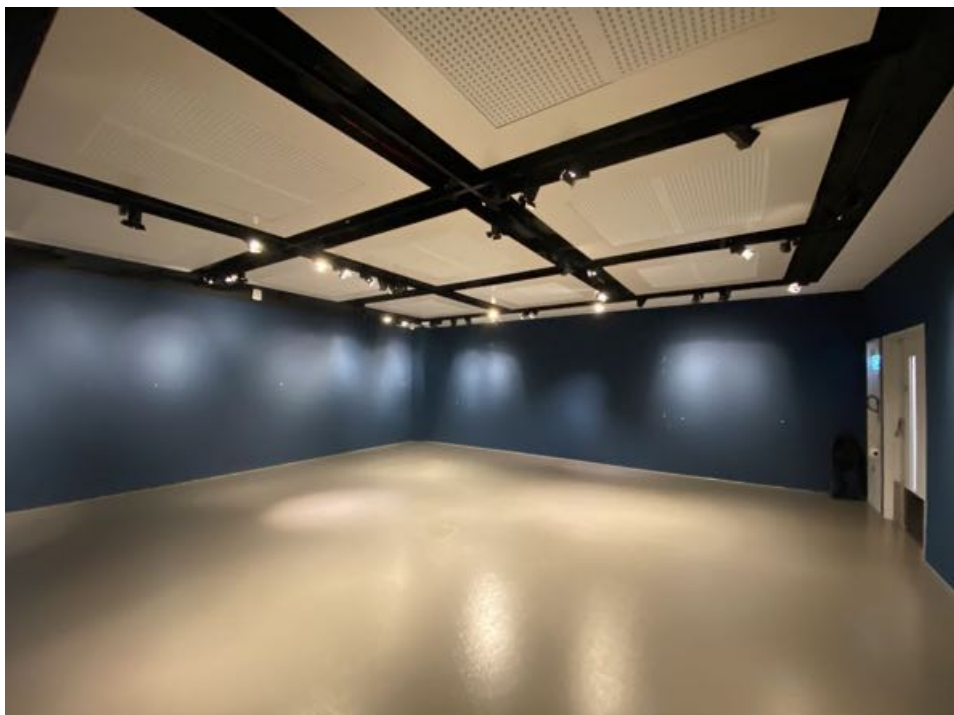
South wall



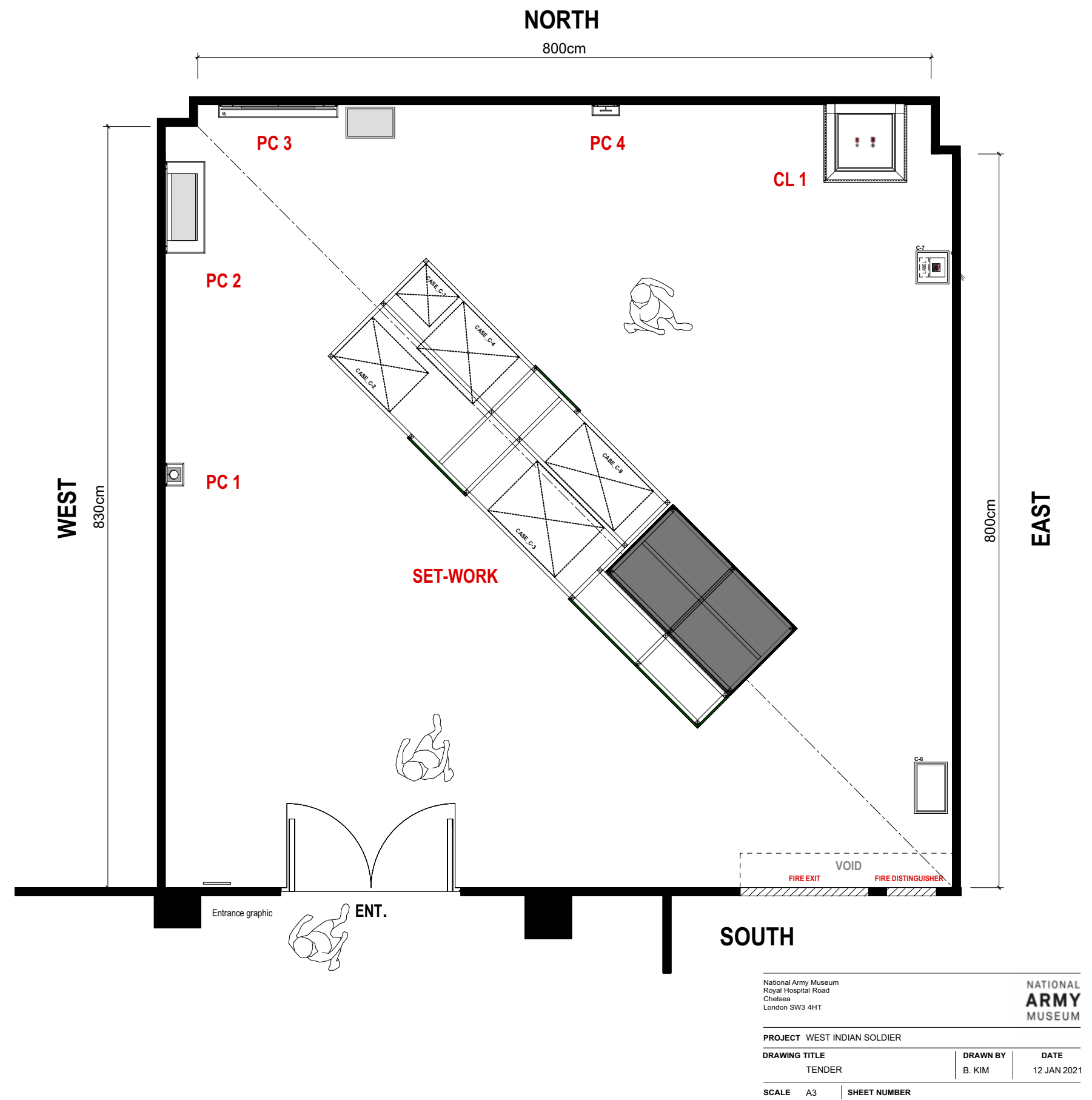
Entrance



West wall

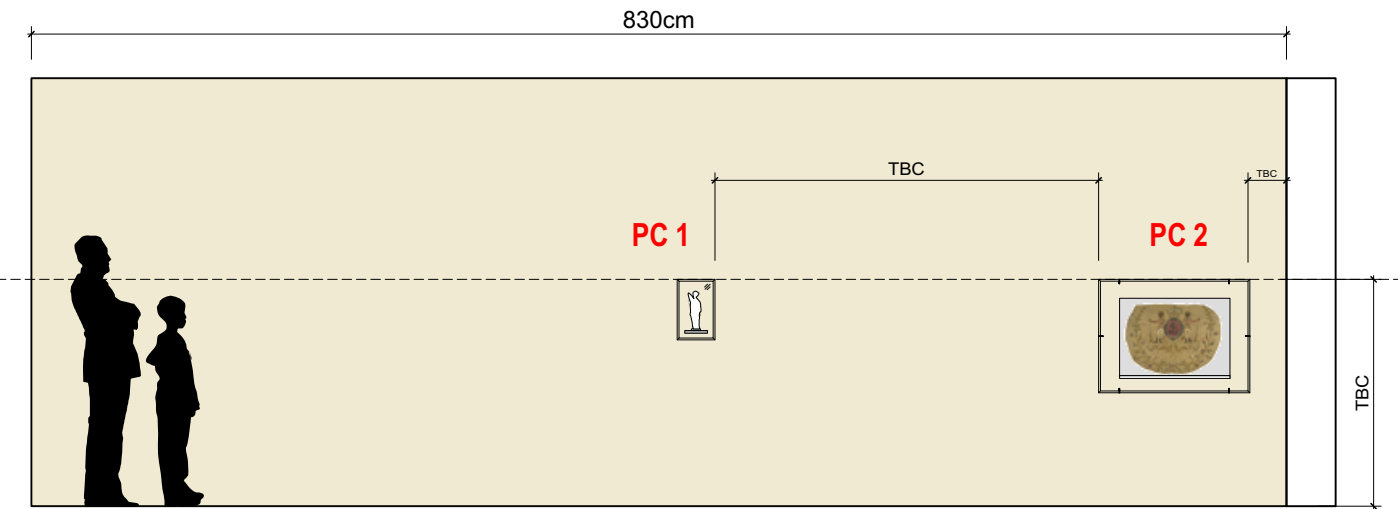


East wall

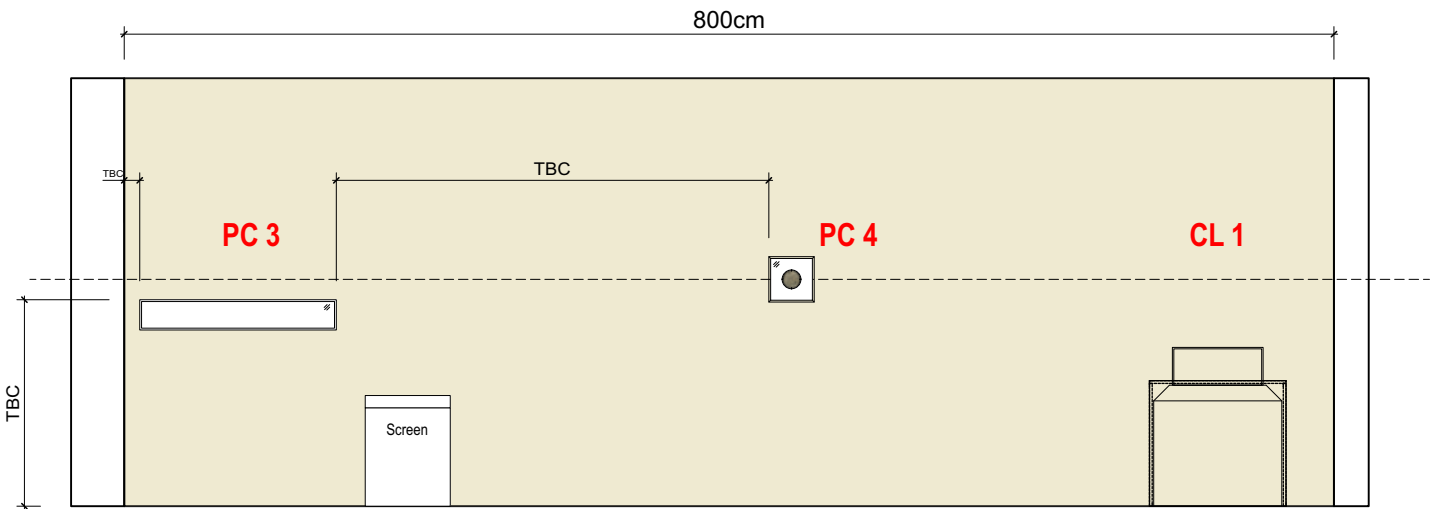


ELEVATION

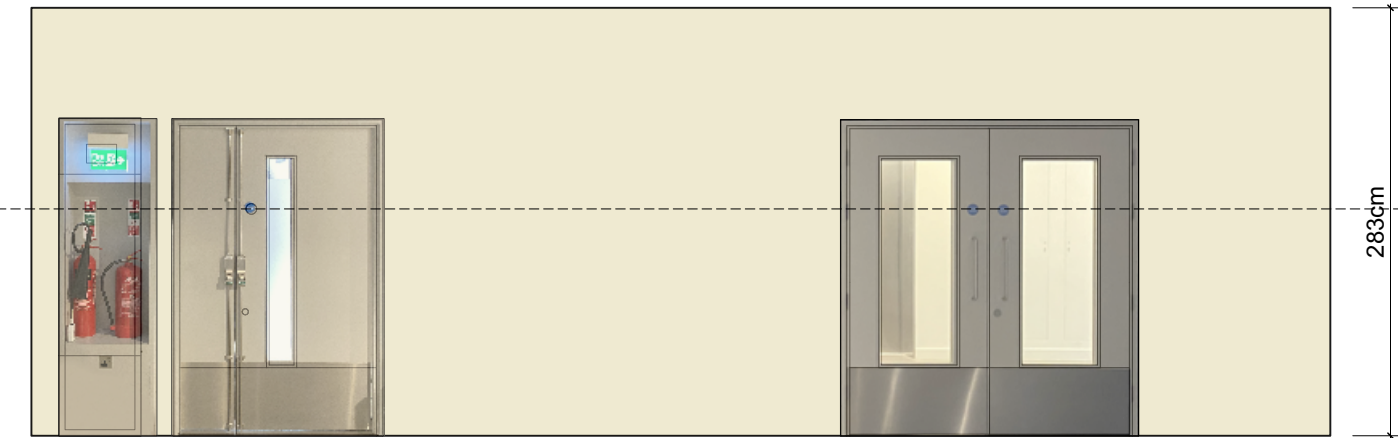
OVERALL ELEVATION FOR ITEMS



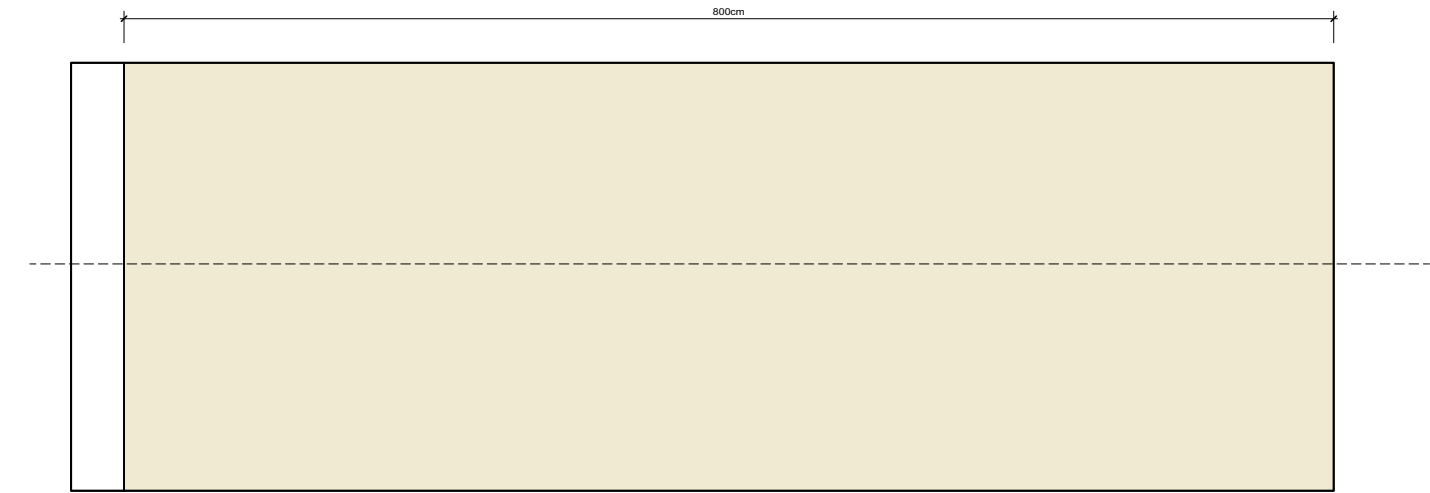
WEST ELEVATION



NORTH ELEVATION



SOUTH ELEVATION



EAST ELEVATION

SETWORK

MATERIAL

outer frame structure:

- structured with 4.4cm square planed timber, no paint
- 18mm standard MDF : marked in green, colour TBC
- exposed screw fixture on square timber frame

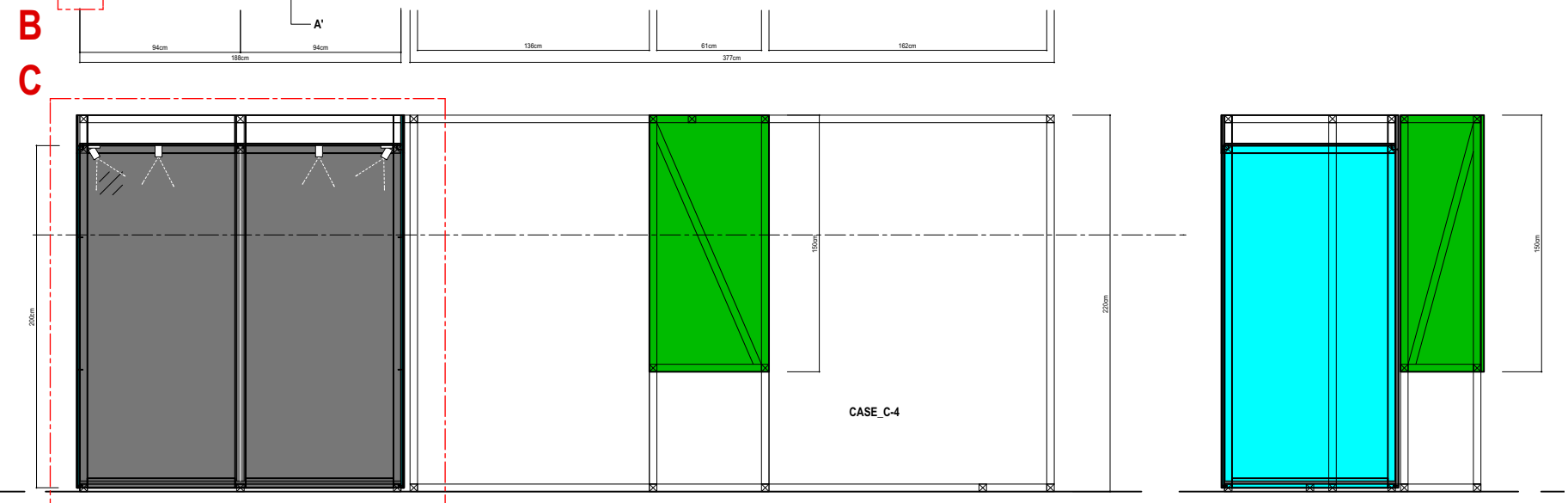
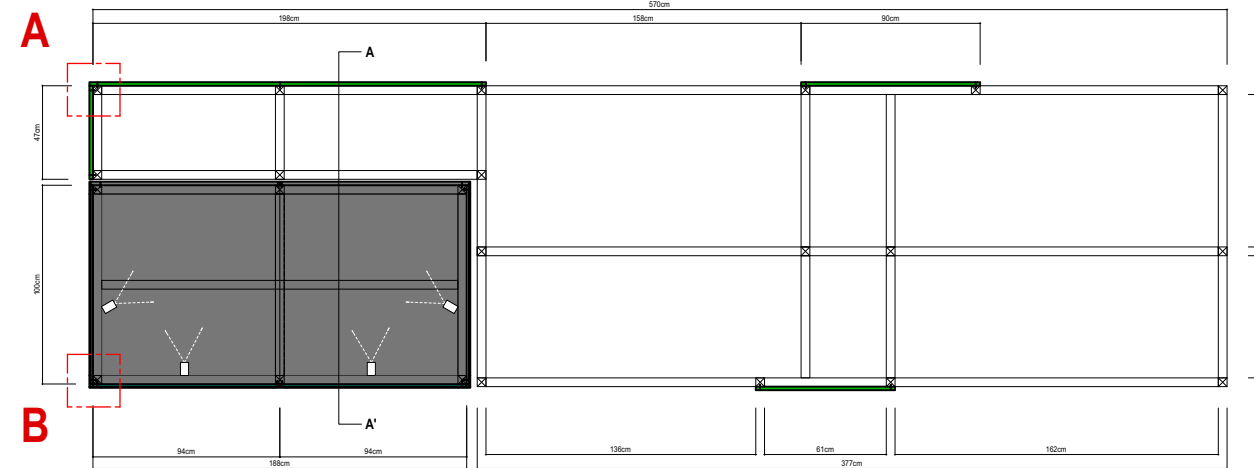
showcase unit: **C**

- showcase enclosure : dacrylate coated 18mm z-mdf (marked in grey),
- 12mm perspex (marked in blue)
- 6mm standard MDF : strip (marked in pink)
- colour : TBC

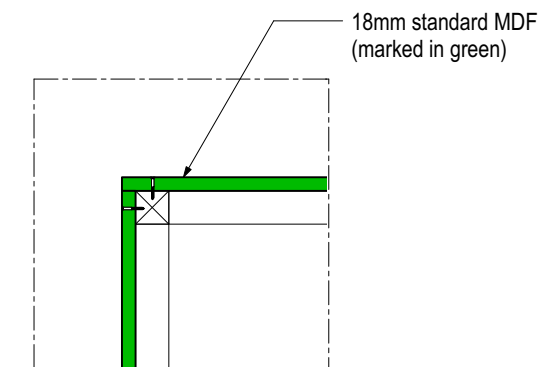
internal LED lighting in showcase unit

- museum will supply the lightings
- to coordinate with museum facilities dept. positioning lightings & wiring

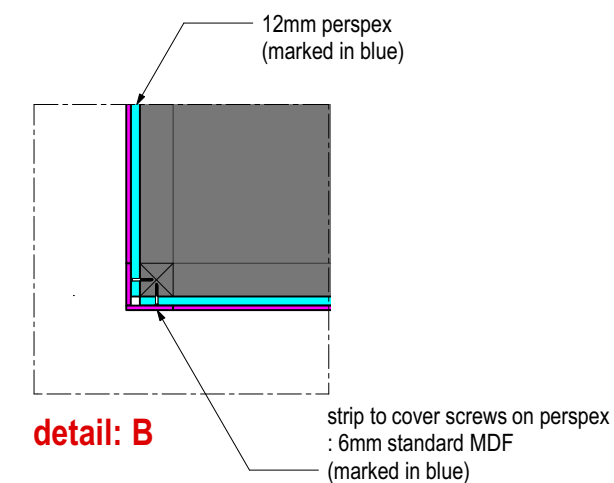
PLAN



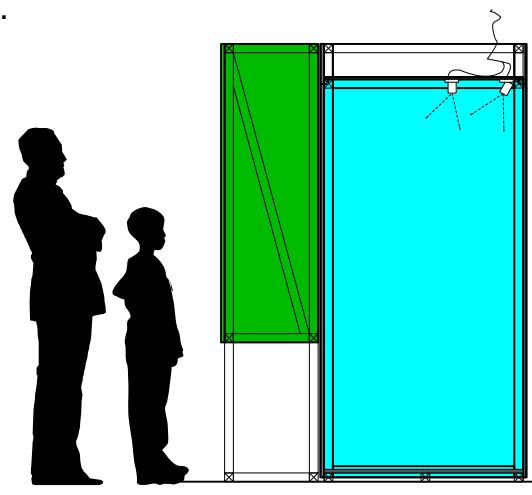
FRONT



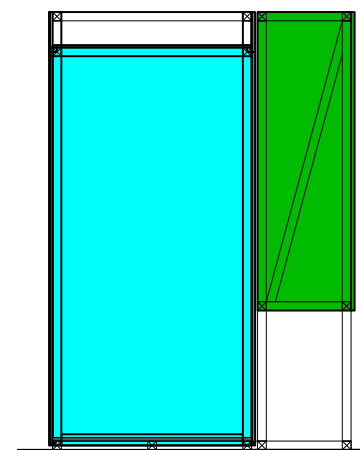
detail: A



detail: B

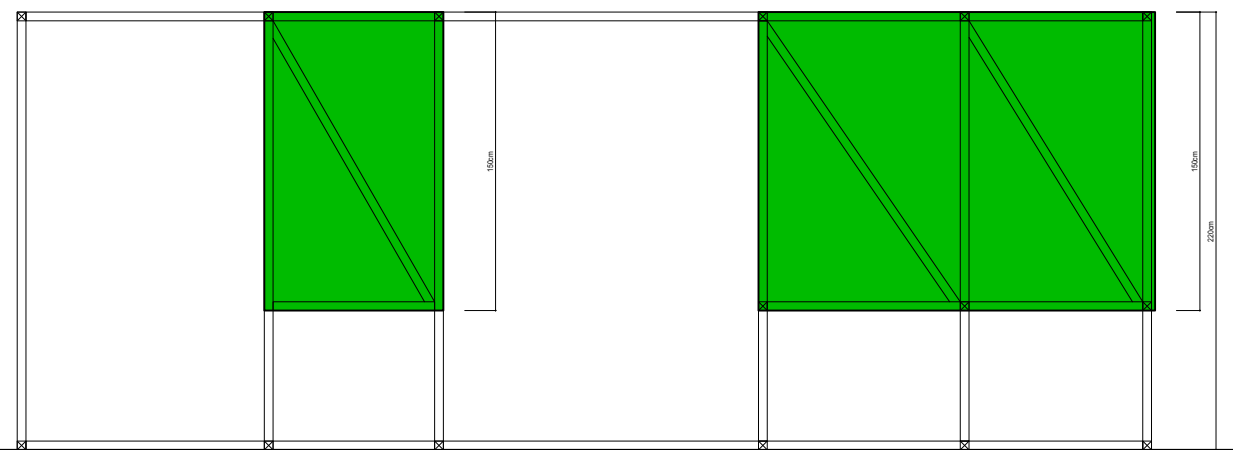


LEFT

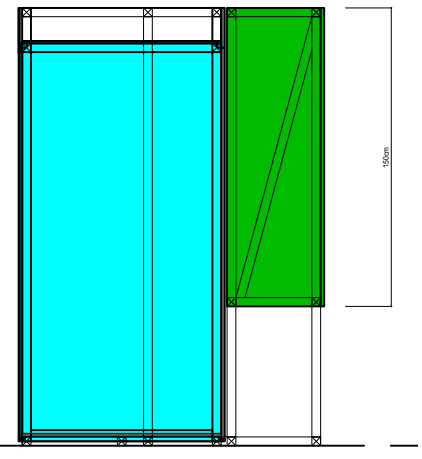


SEC A-A'

BACK



RIGHT



National Army Museum
Royal Hospital Road
Chelsea
London SW3 4HT

NATIONAL
ARMY
MUSEUM

PROJECT WEST INDIAN SOLDIER

DRAWING TITLE
TENDER

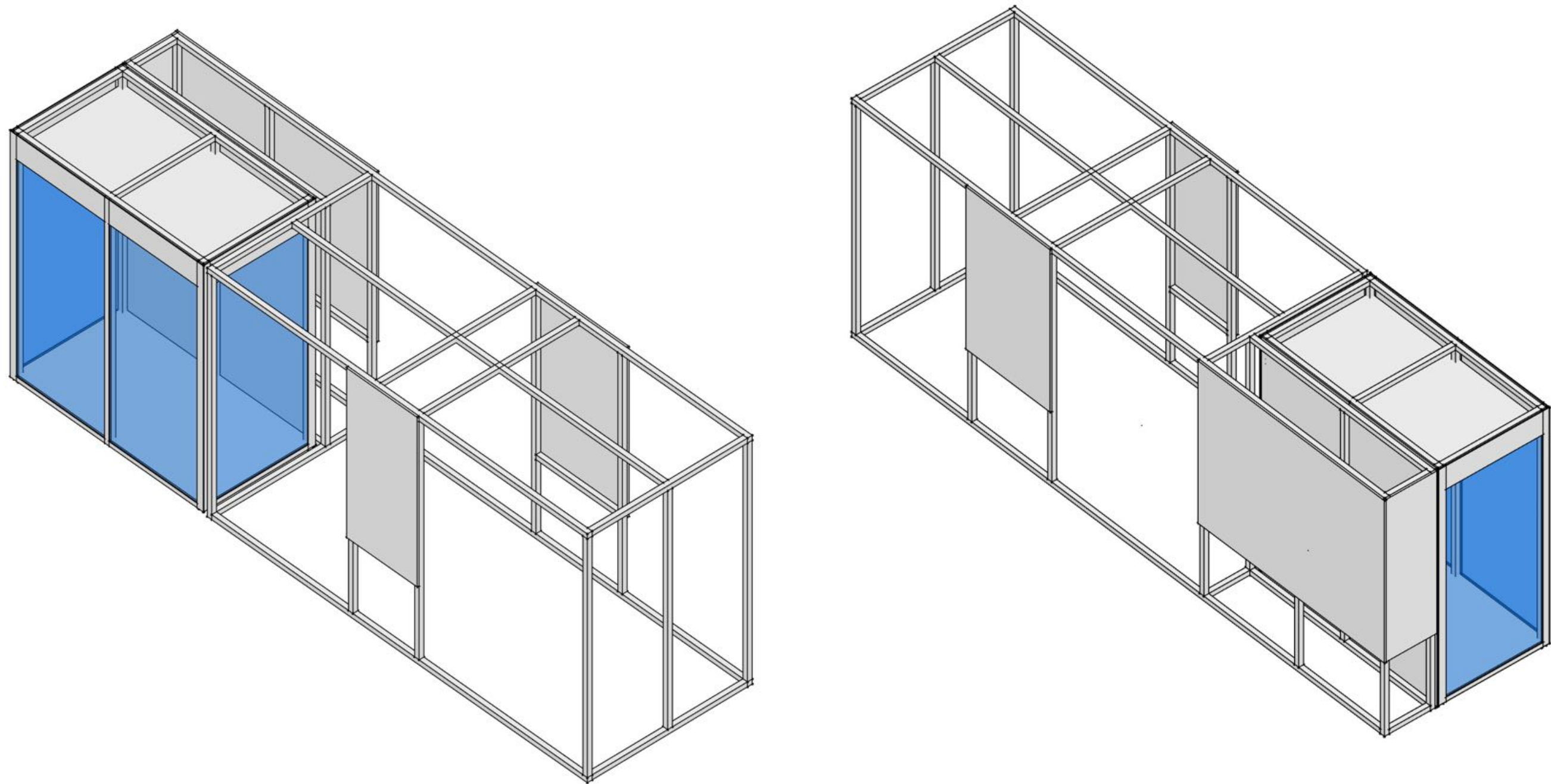
DRAWN BY
B. KIM

DATE
12 JAN 2021

SCALE A3 SHEET NUMBER

SETWORK

OVERALL VIEW OF THE SETWORK UNIT

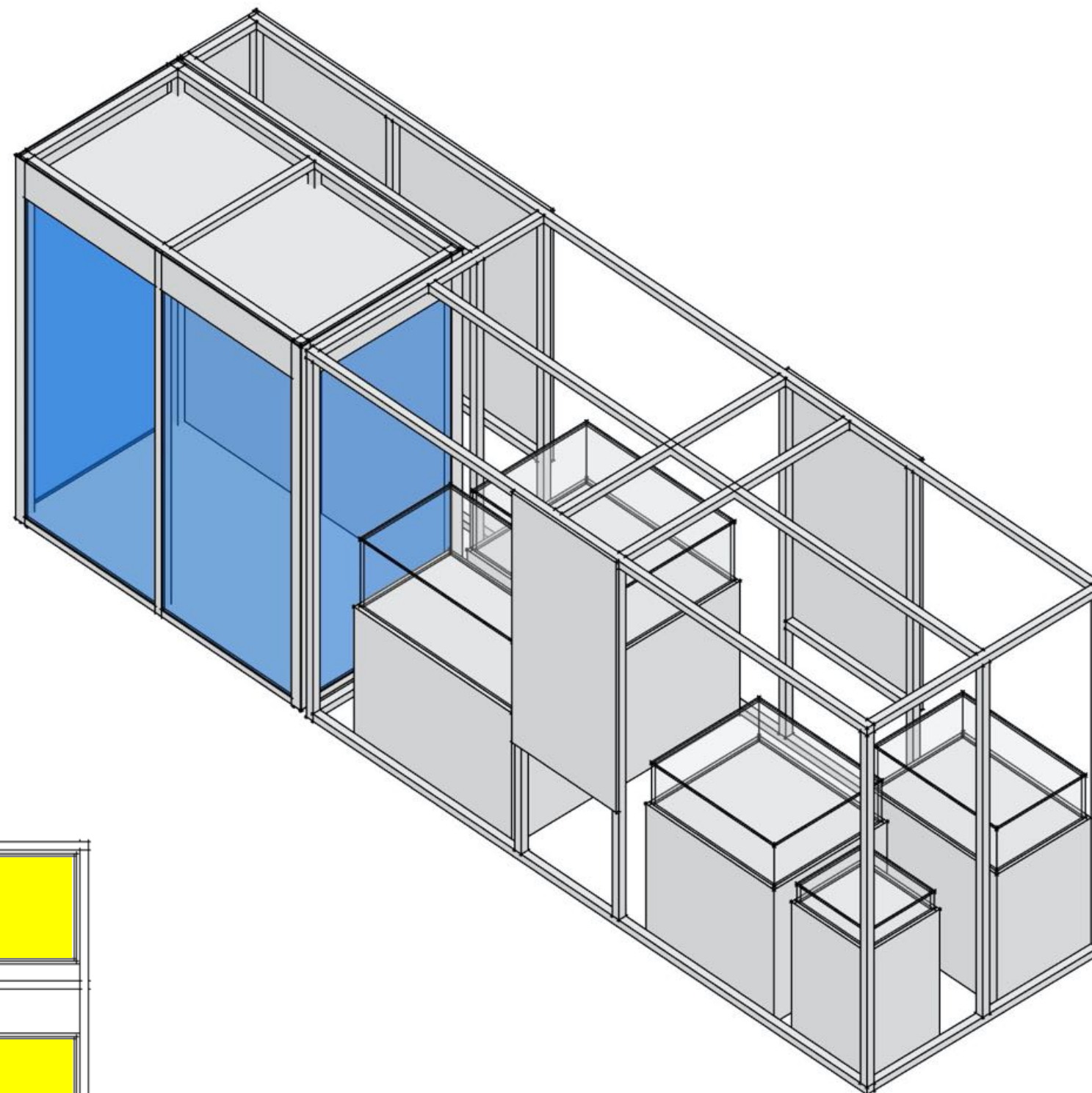
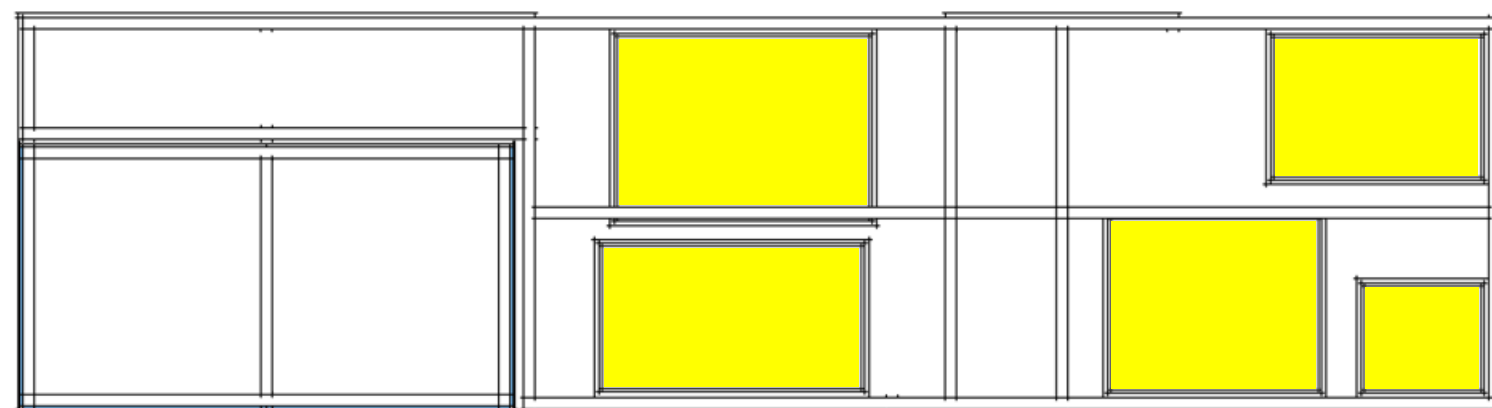


SETWORK

ASSEMBLED VIEW OF LOCATING THE EXISTING CASES INTO THE SETWORK UNIT

NOTE:

The existing cases (in total 8) marked in yellow are located in the gallery Required new paint, colour TBC



National Army Museum
Royal Hospital Road
Chelsea
London SW3 4HT

**NATIONAL
ARMY
MUSEUM**

PROJECT WEST INDIAN SOLDIER

DRAWING TITLE
TENDER

DRAWN BY
B. KIM

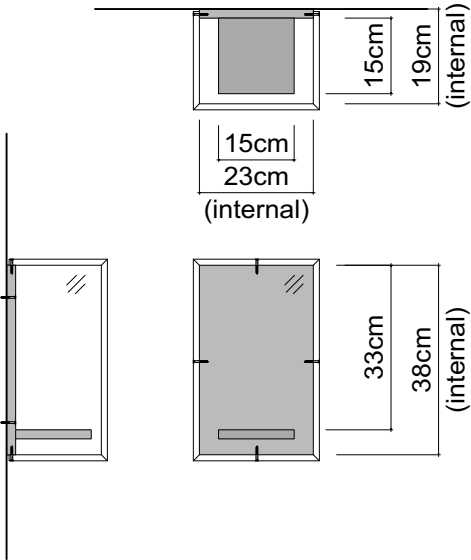
DATE
12 JAN 2021

SCALE A3 SHEET NUMBER

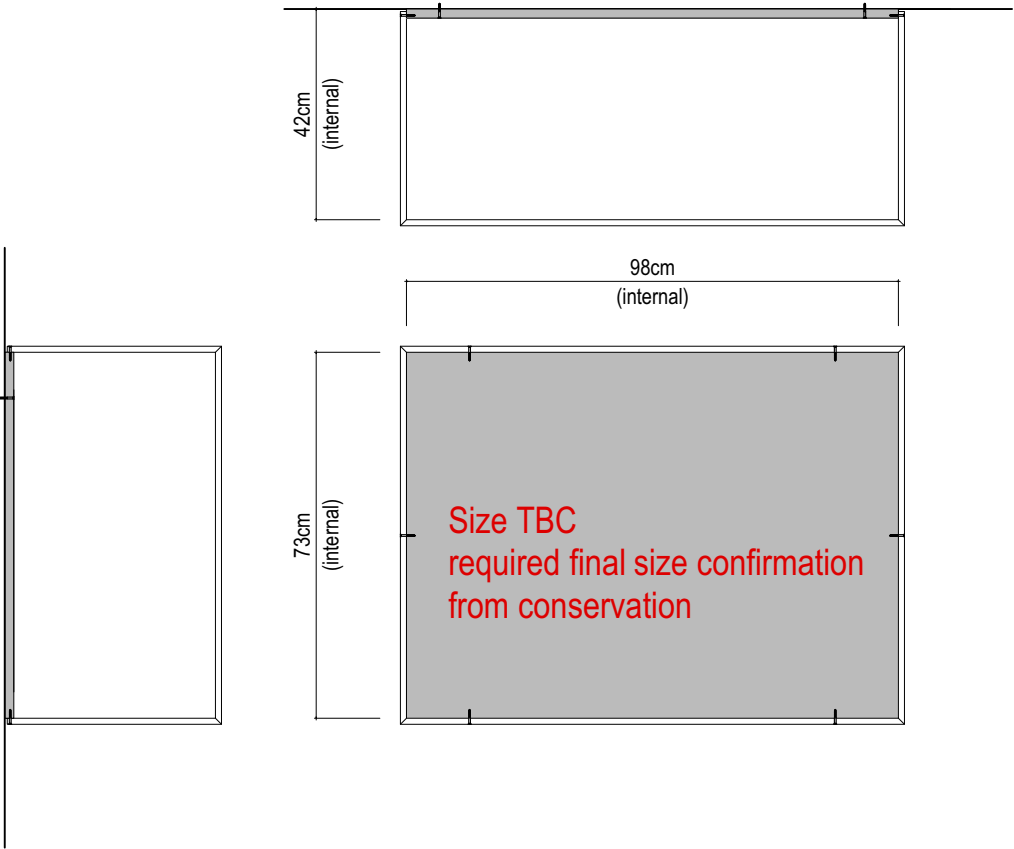
PERSPEX CASES

- MATERIAL**
- showcase enclosure : dacrylate coated 18mm z-mdf
 - 12mm perspex / mitered edges
- Finish**
- colour : TBC

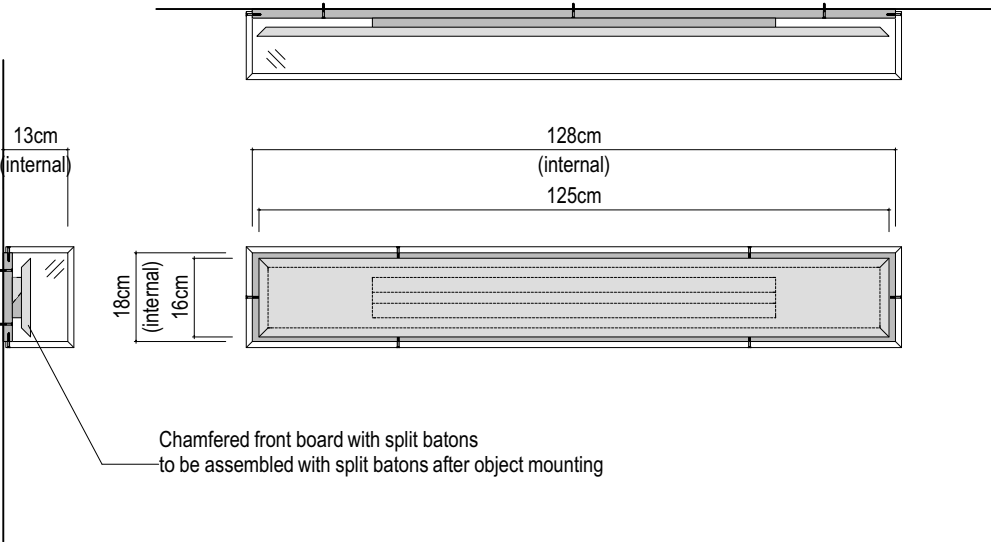
PC 1



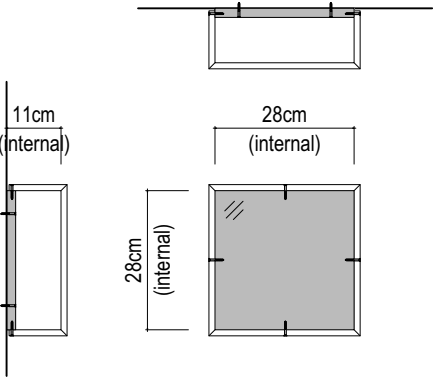
PC 2



PC 3



PC 4



CLADDING

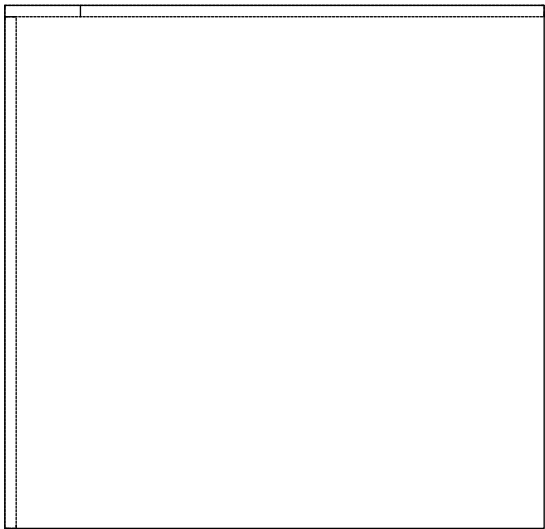
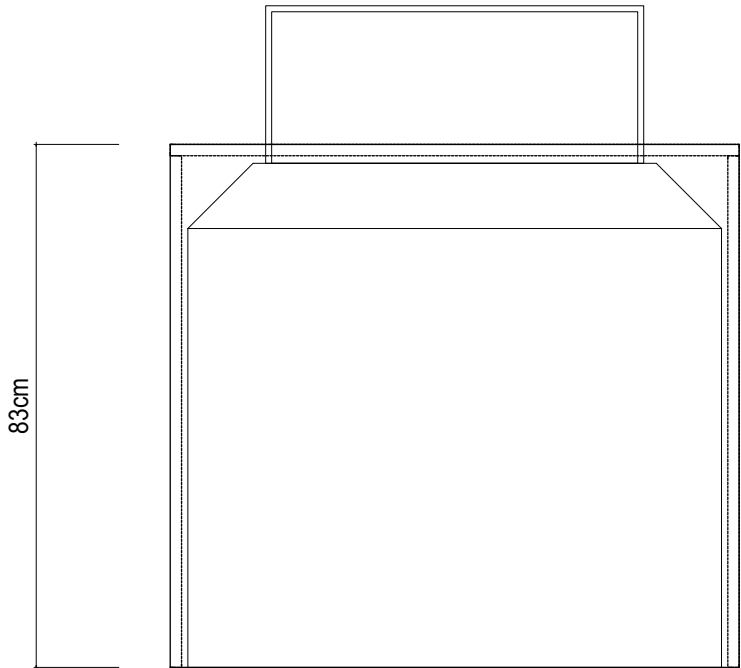
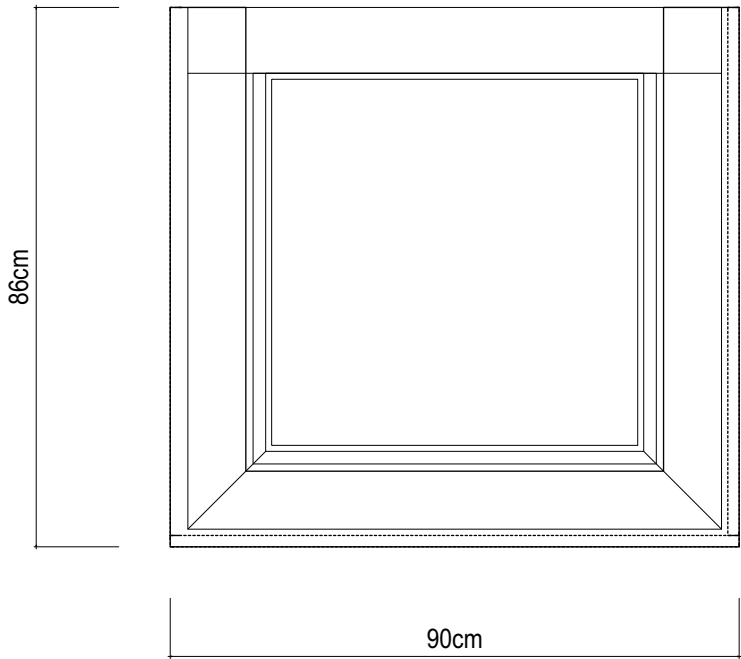
MATERIAL

- standard 18mm mdf

Finish

- colour : TBC

To check & survey



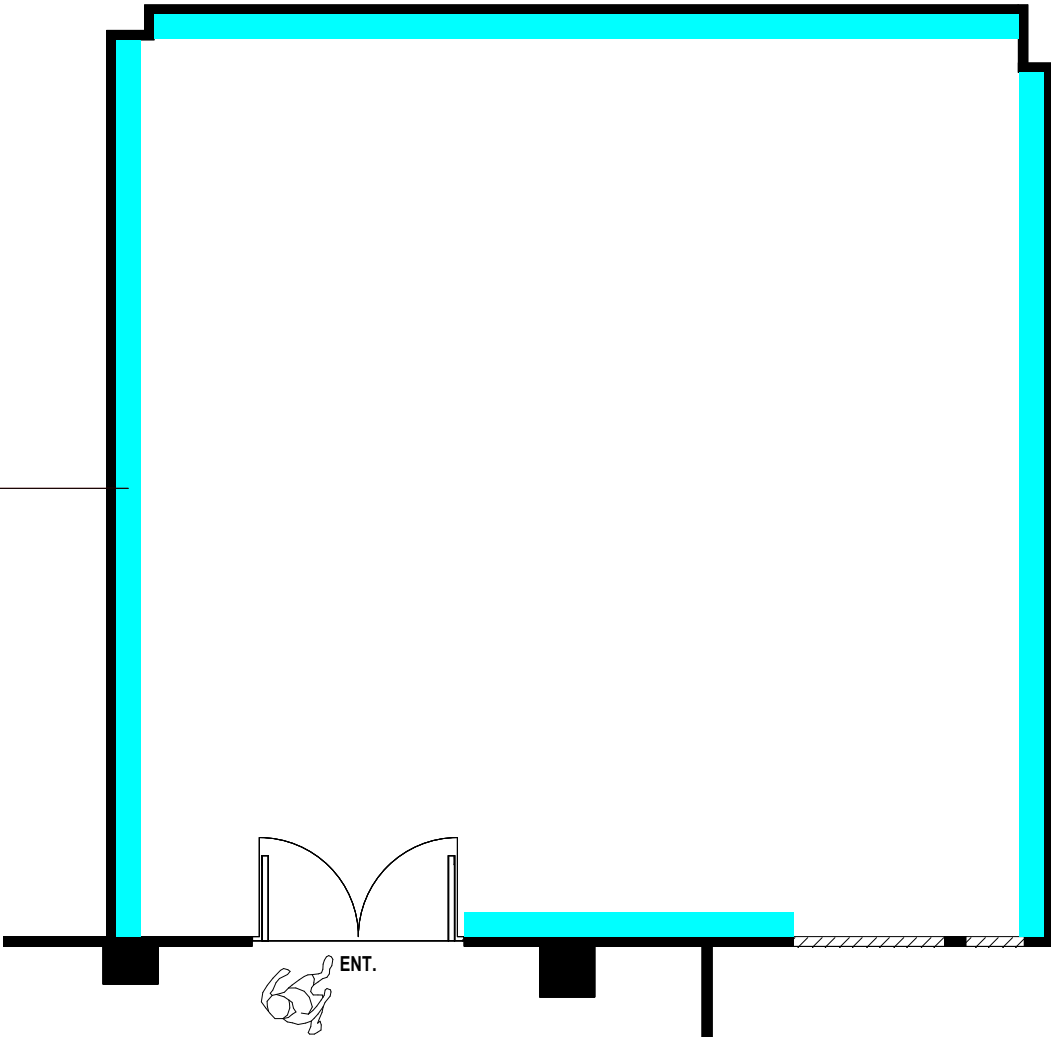
NOTE:
Photo of the existing VC case



REMOVAL EXISTING ARCHED STRUCTURE



NOTE:
Marked in blue to be removed
These are just screwed back to the wall



PAINTING EXISTING DISPLAY CASES



NOTE:
Photo of the existing cases to paint, in total 8 cases
Colour: TBC, water based emulsion colour
Showcase enclosure, base board: 2 coats of dacrylate vanish

CUT APERTURE IN EXISTING AV UNIT



NOTE:
Photo of the existing AV unit
Required a new aperture on top of the exsiting AV unit
due to the film ratio
Size: TBC