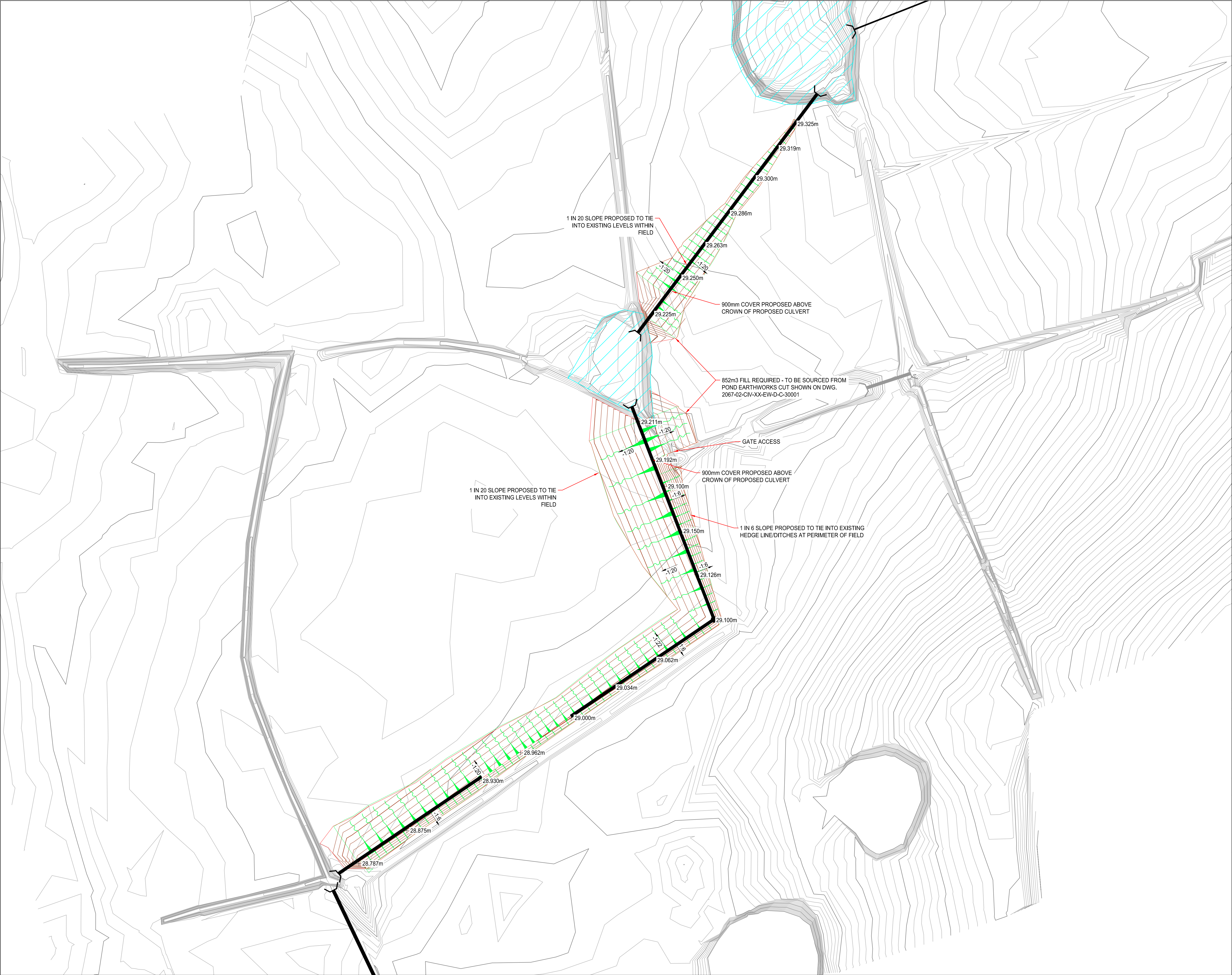


FILE LOCATION PATH: P:\PROJECTS HOT\2067-02 WREA GREEN - REDESIGN\004 BIM\CIVIL\DRAWINGS\2067-02-CIV-XX-EW-D-C-30002 PROPOSED COVER FILL FOR CULVERTS.DWG



STANDARD NOTES

1. THIS DRAWING IS TO BE READ IN CONJUNCTION WITH ALL RELEVANT ARCHITECT'S AND ENGINEER'S DRAWINGS AND THE SPECIFICATIONS.

2. THIS DRAWING SHOULD NOT BE SCALED.

3. ALL DIMENSIONS ARE TO BE VERIFIED BY THE CONTRACTOR ON SITE.

4. ALL DISCREPANCIES SHOULD BE REPORTED TO C.A./E.A. PRIOR TO THE COMMENCEMENT OF WORKS.

© CIVIC ENGINEERS LIMITED

NOTES

1. CONTAINS OS DATA © CROWN COPYRIGHT AND DATABASE RIGHTS 2021. CONTAINS TOPOGRAPHICAL DATA FROM JACK ENGLISH DATED 25.11.2021.

2. CUT & FILL ANALYSIS CALCULATIONS BASED ON EXISTING GROUND SURFACE AGAINST PROPOSED LEVELS. IT IS ASSUMED THAT ALL CUT MATERIAL IS SUITABLE FOR RE-USE

2. THE VOLUMES ARE APPROXIMATE AND DO NOT INCLUDE BULKING OR COMPACTION FACTORS

3. THE VOLUME EXERCISE BASED ON EXISTING AND PROPOSED LEVELS WITH ATOPSOIL STRIP AND REINSTATEMENT OF 300mm

KEY

PROPOSED CULVERT

EXISTING POND

PROPOSED 0.5m INCREMENT CONTOUR

PROPOSED 0.1m INCREMENT CONTOUR

28.04.25	P01	FIRST ISSUE	LT	JF
DATE	REV	DESCRIPTION	DRAWN	CHKD

CIVIC

ENGINEERS

civicingengineers.com

PROJECT

WREA GREEN
LANCASHIRE

TITLE

PROPOSED COVER EARTHWORKS FOR CULVERTS

DRAWING STATUS					STATUS CODE	
FOR REVIEW					-	
CE PROJECT No.	SCALE @ A1	DATE CREATED	DRAWN	CHECKED		
2067-02	1:500	APRIL 25'	LT	JF		
DRAWING No.					REV	
2067-02-CIV-XX-EW-D-C-30002					P01	